

Lab 4a – Ordering and Installing VMWare WorkStation 15 on your computer

This assignment relates to the following Course Learning Requirements:

- CLR 2: Explain clearly and access the information and resources contained in Brightspace.
- CLR 5: Describe the architecture and processing of hardware and software functional components of a computer.
- CLR 8: Install and configure an operating system in a virtual environment using VMWare.

Objective of this Assignment:

To explore digital resources, download and install VMWare Workstation 15 on your computer. Making your VMWare WorkStation ready for installing Linux Lab 04b. Keep this installation well maintained. You will require this 'Linux on VMWare Workstation 15' installation for future courses.

**If you already have downloaded and installed VMWare Workstation 15 properly, you may proceed to the end of this document and submit the deliverable. Then you may start Lab-04b.

Pre-Assignment Instructions:

You will require the followings:

- Laptop running Microsoft Windows 10.x
- Network Connection to Internet and sufficient download Bandwidth.
- Algonquin College Brightspace Account

Assignment Tasks:


 Follow the steps described below.

Procedure outlined:

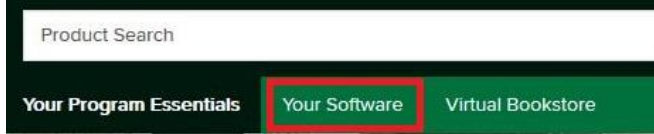
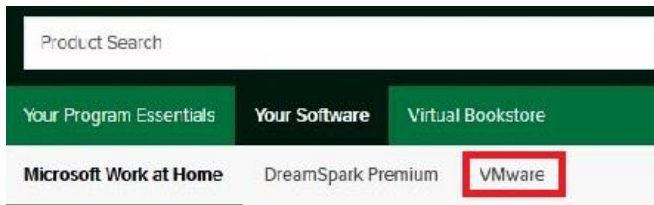


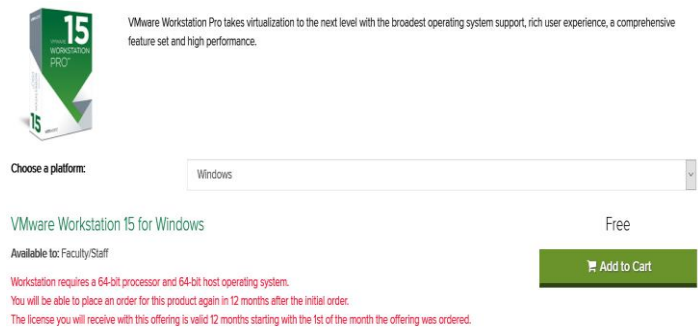
Lab 04 has two parts:

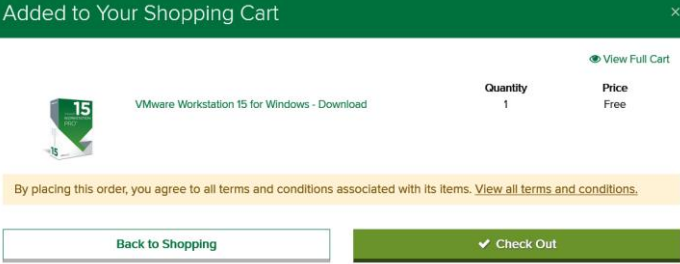
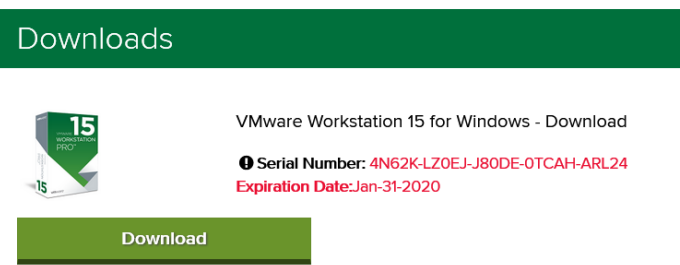


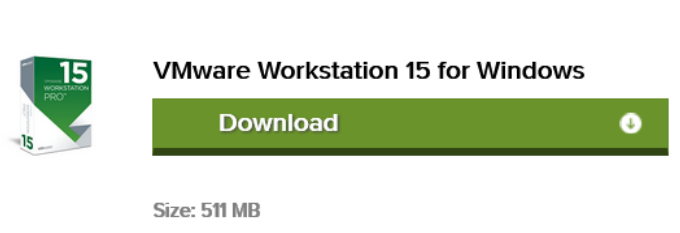
1. Part 04a: Ordering and Installing VMWare WorkStation 15 on your computer.
2. Part 04b: Once you have finished this portion of the lab assignment you will move on to Part b Downloading and Installing Linux as a virtual machine.

The following instructions will guide you through the installation process for VMWare Workstation 15.

 *Note: The steps and screen captures shown in this lab may be slightly different from your screen.*

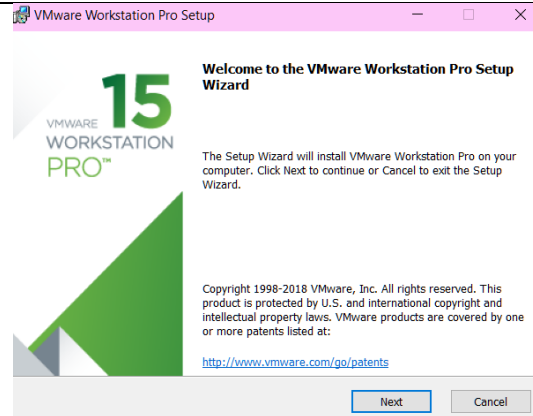
Log on to your Brightspace account and click on the Digital Resources link, located above the Algonquin College banner.

<p>1. Log on to the Digital Resources using your Algonquin College network user name and password. Once you have logged on, click on the Your Software tab.</p>	
<p>2. Click on the VMWare link located on the right-hand side of the page.</p>	
<p>3. Once you are in the VMWare page, select the Software tab. It is located on the left-hand side of the screen.</p>	
<p>4. Select the VMware Workstation 15.</p>	
<p>5. Select the Windows Platform and review the Host System Requirements for Workstation 15. If your system meets the specifications, click the “Add to Cart” button.</p>	

<p>6. In the bottom right corner, there is a button labelled “Checkout”. Click it.</p>	
<p>7. You are now at the summary order page.</p> <p>It may take a few minutes for the serial number field to contain a value. Copy the serial number down as you will need it later.</p> <p>Then click the start Download button. You will receive a summary page by e-mail.</p>	
<p>8. You may have to download the secure download manger software first.</p>	
<p>9. Once the secure download manger is downloaded, you can then download the VMware software.</p>	
<p>10. Now you will be taken to the download page. Click the start down Download button.</p>	
<p>11. Now, the download will start. Save the downloaded file to a location on your hard disk. It is a large file to download, around 511 MB in size, so be patient.</p> <p>12. The next step is to install VMWare on your computer.</p> <ul style="list-style-type: none"> ☞ Locate the downloaded file and ☞ click on it to launch the application. 	

13. VMWare will load, and the installation wizard will start.

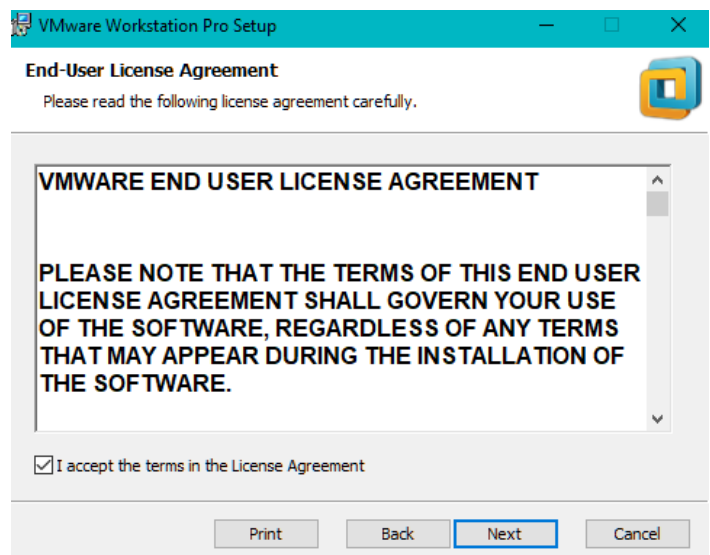
☞ Click on the **Next** button.



14. The license agreement will be displayed.
Read the license and

☞ select the **“I accept the terms in the license agreement”** checkbox and

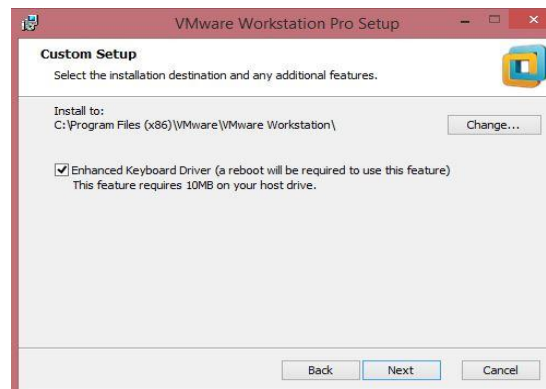
☞ click next.

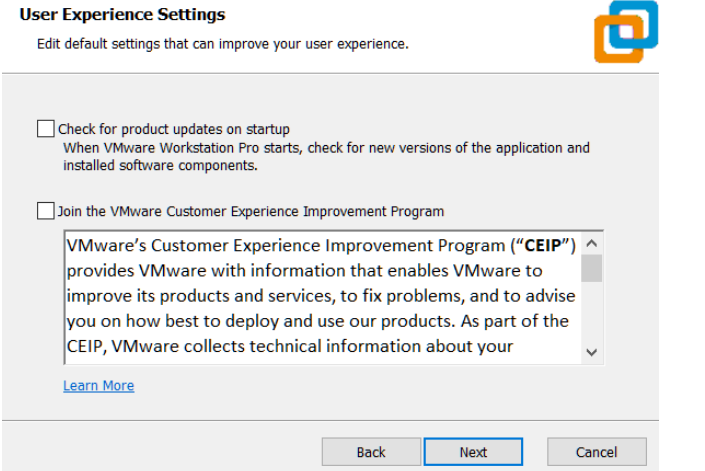
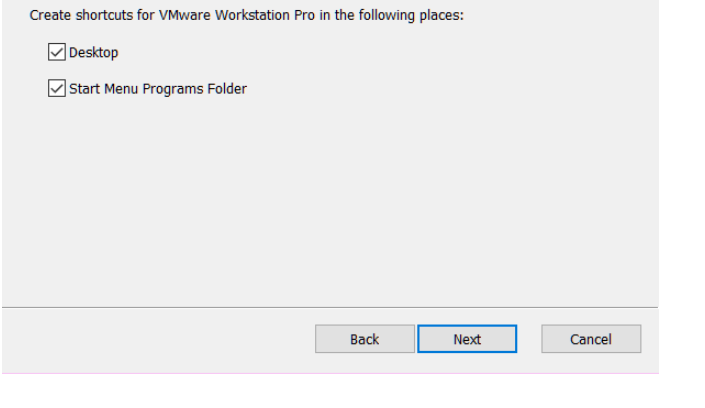
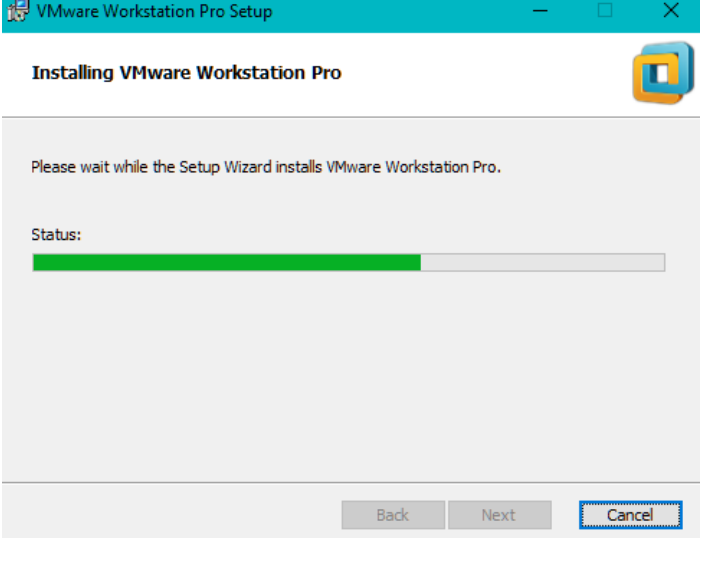


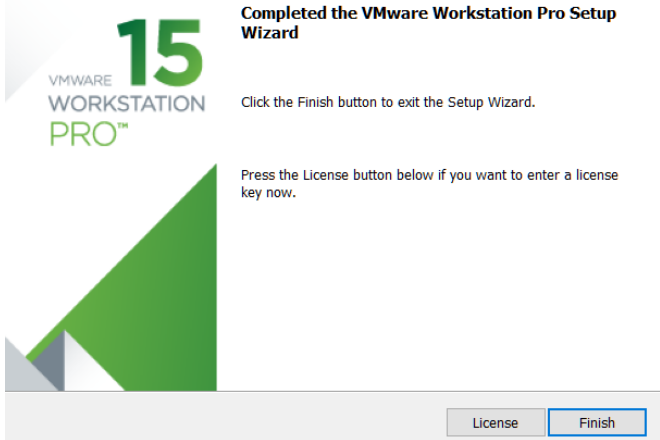

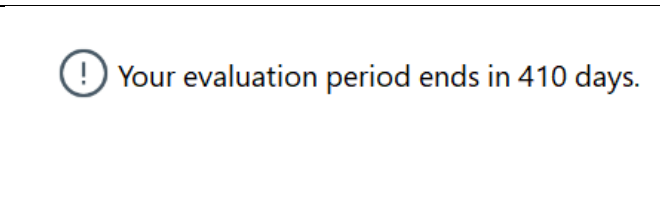
15. Accept the default folder location that is displayed. This is the folder that you would like VMWare Workstation will be installed into.

16. Check the box to install the enhanced keyboard driver.

☞ Click on **Next** button.



<p>17. Ensure the box that is labeled “Check for product updates on start up” is not checked. Click the “Next” button.</p> <p>18. It’s your choice if you want to participate or not in the User Experience Improvement Program.</p> <p>19. Click Next button when you’ve made your choice.</p>	 <p>User Experience Settings Edit default settings that can improve your user experience.</p> <p><input type="checkbox"/> Check for product updates on startup When VMware Workstation Pro starts, check for new versions of the application and installed software components.</p> <p><input type="checkbox"/> Join the VMware Customer Experience Improvement Program</p> <p>VMware’s Customer Experience Improvement Program (“CEIP”) provides VMware with information that enables VMware to improve its products and services, to fix problems, and to advise you on how best to deploy and use our products. As part of the CEIP, VMware collects technical information about your</p> <p>Learn More</p> <p>Back Next Cancel</p>
<p>20. Select what shortcuts you want; a Desktop icon is usually good thing to have.</p> <p>21. Click on Next button when you have made your selections.</p>	 <p>Create shortcuts for VMware Workstation Pro in the following places:</p> <p><input checked="" type="checkbox"/> Desktop</p> <p><input checked="" type="checkbox"/> Start Menu Programs Folder</p> <p>Back Next Cancel</p>
<p>22. You are now ready to install VMware workstation; click on Install button.</p>	
<p>23. The VMware installation will start and load packages to the system.</p> <p>It may take several minutes, so please be patient.</p> <p>As packages are installed, the status bar will indicate their progress. Wait for all tools to be installed and please don’t be impatient if the status bar doesn’t change for a minute or two.</p>	 <p>VMware Workstation Pro Setup</p> <p>Installing VMware Workstation Pro</p> <p>Please wait while the Setup Wizard installs VMware Workstation Pro.</p> <p>Status:</p> <p>Back Next Cancel</p>

<p>24. Once the packages have finished installing; you will see a screen indicating the setup wizard has completed installing the program.</p> <p>25. Click on the Finish button.</p> <p>26. You may be prompted to restart your laptop. Before you restart your laptop ensure you save any work and close any open programs.</p>	
<p>27. Once you have re-started your computer, locate the VMware Workstation program, and start it.</p> <p>28. Once you start the program, you will be prompted for the license key. Enter the license key that you copied earlier and press the Continue button.</p> <p>29. You will then see a welcome message. Press the Finish button to start workstation program.</p>	
<p>30. Once the workstation program starts, you will see a message, near the top of the screen, letting you know that your evaluation period ends in approximately 410 days.</p>	

Deliverables (a document file lastName_StudentID_Lab04a.docx):

1. Please confirm which version of VMWare Workstation have you installed.
2. Take a screen shot of Step 30 (entire screen) and submit in the document.
3. Select 'Edit' drop down menu and choose preferences. Just take a screen shot and submit.
4. Mention your experience to install VMWare Workstation 15. Mention if there were any difficulty and how did you solve it.