

# CST2355 Assignment 5

DATA WAREHOUSES & BUSINESS INTELLIGENCE

CAITLIN ROSS

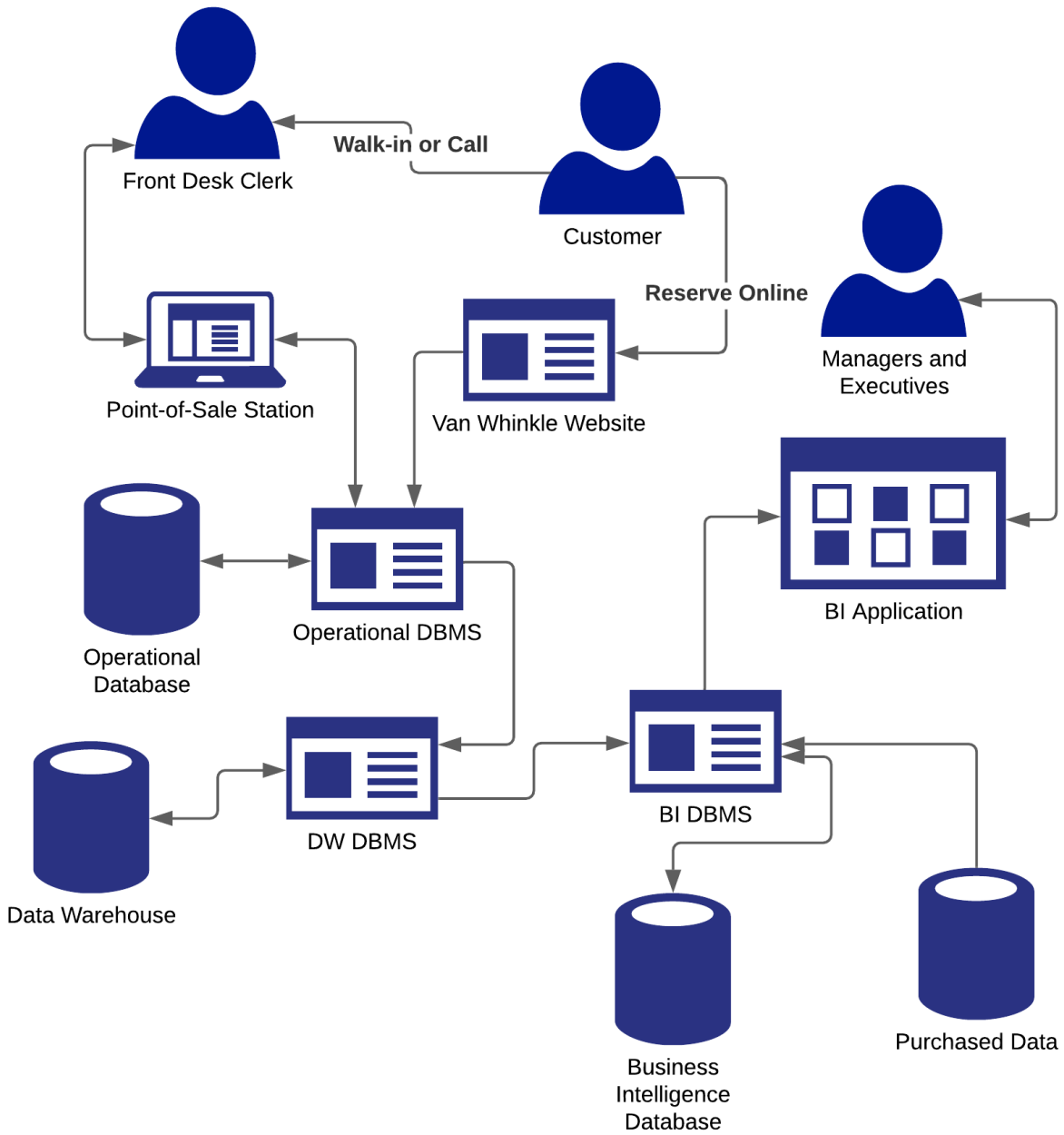
# 040750891

CST2355 ASSIGNMENT 5  
Data Warehouses & Business Intelligence

## Contents

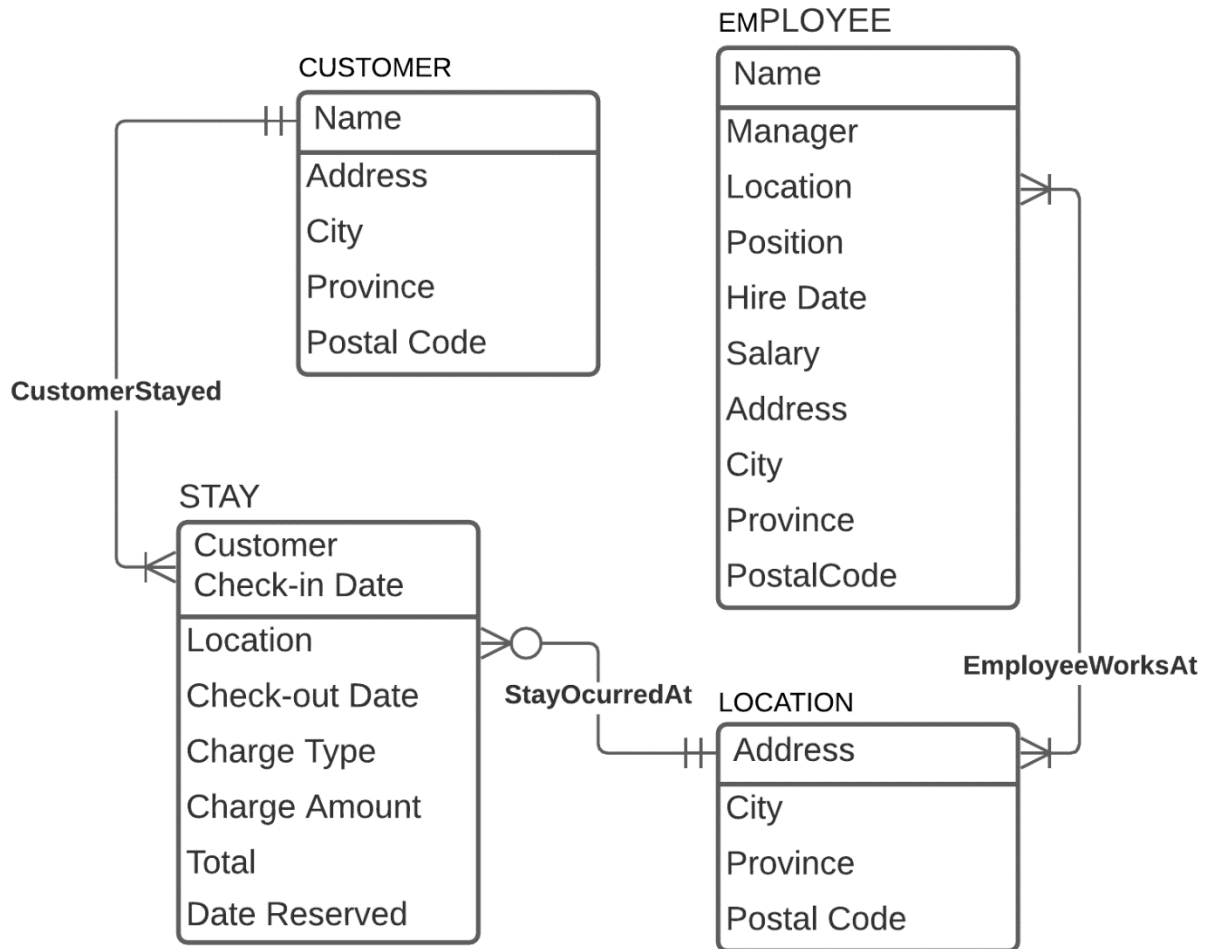
System Diagram .....	2
Data Model.....	2
Database Design: Database.....	3
Database Design: Data Warehouse .....	5
Database Design: Business Intelligence .....	5

## System Diagram



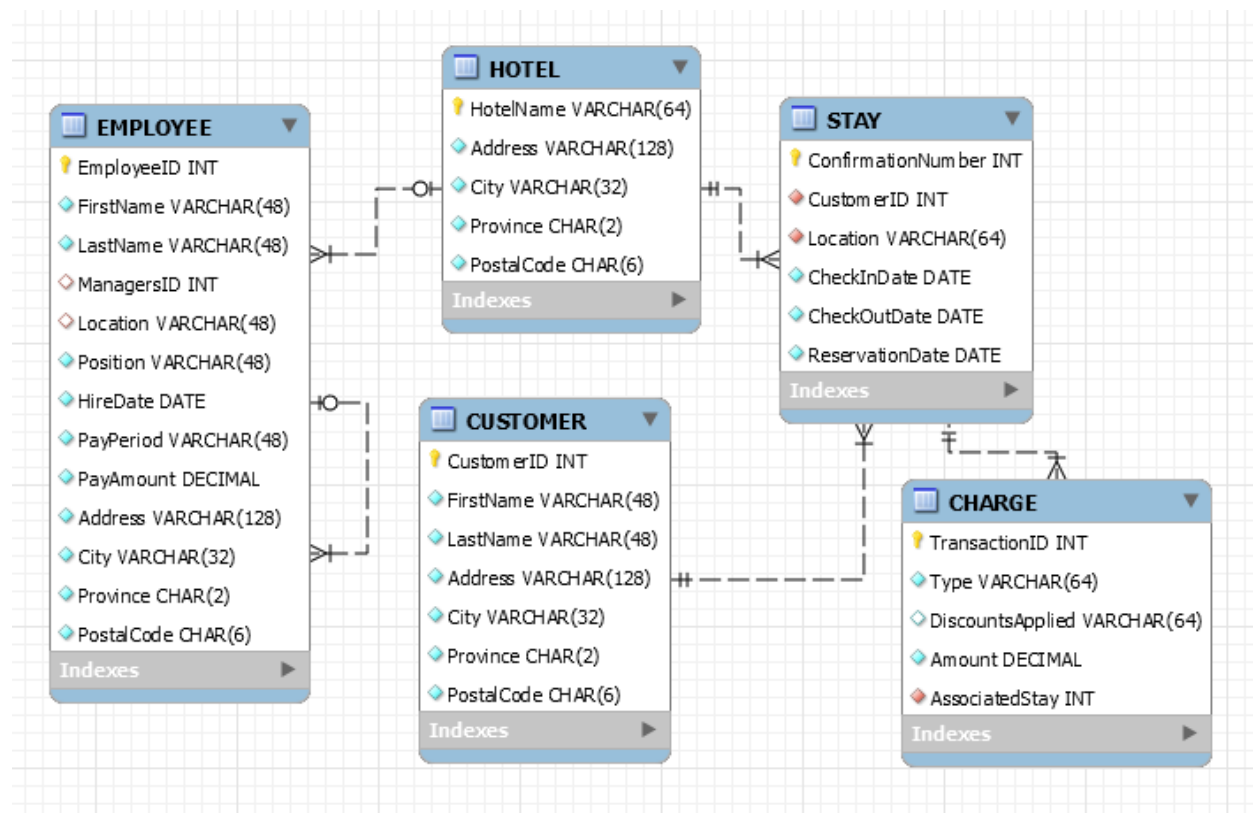
*Used Azure Enterprise shapes on LucidChart*

## Data Model

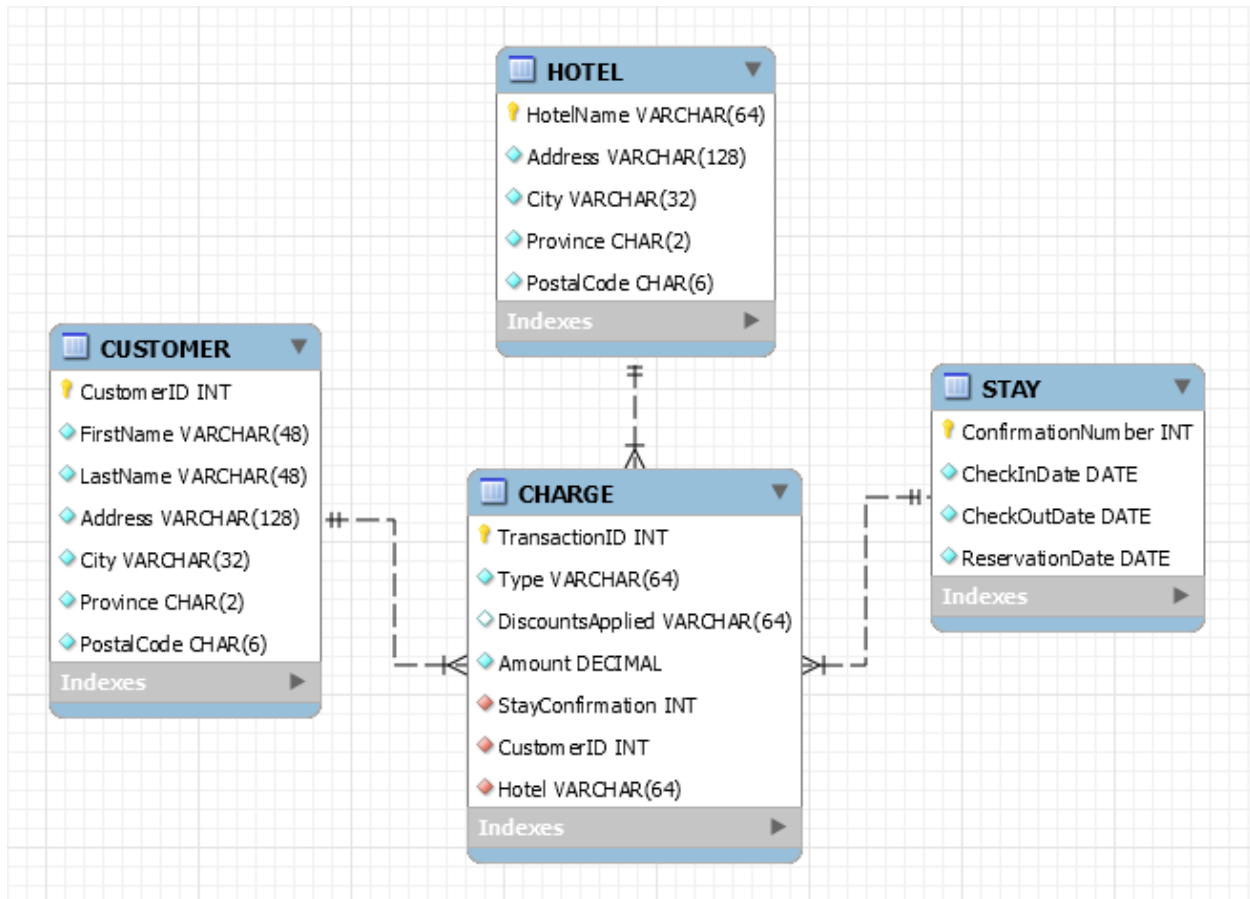


*Added LOCATION entity to connect EMPLOYEE entity to rest of database, and because Van Whinkle plans on buying more locations.*

## Database Design: Operational Database



## Database Design: Data Warehouse



### Dimension Descriptor(s):

### Measure(s):

- CHARGE.Amount

### Dimension(s):

- CHARGE.AssociatedStay
- CHARGE.CustomerID
- CHARGE.Location
- CHARGE.Type
- CHARGE.DiscountsApplied

- CUSTOMER.FirstName
- CUSTOMER.LastName
- CUSTOMER.Address
- CUSTOMER.City
- CUSTOMER.Province
- CUSTOMER.PostalCode
- HOTEL.Address
- HOTEL.City
- HOTEL.Province
- HOTEL.PostalCode
- STAY.CheckInDate
- STAY.CheckOutDate
- STAY.ReservationDate

## Database Design: Business Intelligence

