



**1** EXPERIENCED

### SIZES

#### To fit bust measurement

- Extra-Small/Small**  
28-34" [71-86.5 cm]
- Medium**  
36-38" [91.5-96.5 cm]
- Large/Extra-Large**  
40-46" [101.5-117 cm]
- 2/3 Extra-Large**  
48-54" [122-137 cm]
- 4/5 Extra-Large**  
56-62" [142-157.5 cm]

#### Finished bust

- X-Small/Small** 36" [91.5 cm]
- Medium** 40" [101.5 cm]
- Large/Extra-Large** 46" [117 cm]
- 2/3 Extra-Large** 56" [142 cm]
- 4/5 Extra-Large** 64" [162.5 cm]

#### GAUGE

22 dc and 12 rows = 4" [10 cm].

#### INSTRUCTIONS

*The instructions are written for smallest size. If changes are necessary for larger sizes the instructions will be written thus ( ). Numbers for each size are shown in the same color throughout the pattern. When only one number is given in black, it applies to all sizes.*

#### BACK

**Note:** Ch 3 at beg of rnd counts as dc.

Beg at center Back, ch 5. Join with sl st to first ch to form a ring. (See chart on page 4)

**1st rnd:** Ch 3. 15 dc in ring. Join with sl st to top of ch 3.

**2nd rnd:** Ch 3. (1 dc. Ch 2. 2 dc) in same sp as sl st. \*Miss next dc. (2 dc. Ch 2. 2 dc) in next dc. Rep from \* around. Miss last dc. Join with sl st to top of ch 3.

**3rd rnd:** Sl st in next dc and ch-2 sp. Ch 3. (2 dc. Ch 2. 3 dc) in same sp as last sl st - beg shell made. \*(2 dc. Ch 3. 2 dc) in next ch-2 sp. (3 dc. Ch 2. 3 dc) in next ch-2 sp - shell made. Rep from \* around, ending with (2 dc. Ch 3. 2 dc) in last ch-2 sp. Join with sl st to top of ch 3.

**4th rnd:** Sl st in each of next 2 dc and ch-2 sp. Beg shell in same sp as last sl st. \*Ch 2. 10 dc in next ch-3 sp. Ch 2.\*\* Shell in ch-2 sp of next shell. Rep from \* around, ending at \*\*. Join with sl st to top of ch 3.

**5th rnd:** Sl st in each of next 2 dc and ch-2 sp. Beg shell in same sp as last sl st. \*Ch 2. Miss next ch-2 sp. (1 dc in next dc. Ch 1) 9 times. 1 dc in next dc. Ch 2. Miss next ch-2 sp.\*\* Shell in ch-2 sp of next shell. Rep from \* around, ending at \*\*. Join with sl st to top of ch 3.

**6th rnd:** Sl st in each of next 2 dc and ch-2 sp. [Ch 3. 2 dc. (Ch 2. 3 dc) twice] all in same sp as last sl st. \*Ch 2. Miss next ch-2 sp. (1 sc in next ch-1 sp. Ch 3) 8 times. 1 sc in next

#### MATERIALS

Patons® Grace™ (1.75 oz/50 g; 136 yds/125 m)

Sizes	XS/S	M	L/XL	2/3XL	4/5XL	
Clay (62044)	6	7	10	12	14	balls

Size U.S. E/4 (3.5 mm) crochet hook **or size needed to obtain gauge.** 2 beads (optional).

#### ABBREVIATIONS: [www.yarnspirations.com/abbreviations](http://www.yarnspirations.com/abbreviations)

<b>Beg</b> = Beginning	<b>Pat</b> = Pattern	<b>RS</b> = Right side
<b>Ch</b> = Chain(s)	<b>Rem</b> = Remaining(s)	<b>Sl st</b> = Slip stitch
<b>Dc</b> = Double crochet	<b>Rep</b> = Repeat	<b>Sp(s)</b> = Space(s)
	<b>Rnd(s)</b> = Round(s)	<b>WS</b> = Wrong side



ch-1 sp.\*\* Miss next ch-2 sp. (Ch 2. 3 dc) 3 times in ch-2 sp of next shell. Rep from \* around, ending at \*\*. Ch 2. Miss last ch-2 sp. Join with sl st to top of ch 3.

**7th rnd:** Sl st in each of next 2 dc and ch-2 sp. Beg shell in same sp as last sl st. Ch 2. Shell in next ch-2 sp. \*Ch 2. Miss next ch-2 sp. (1 sc in next ch-3 sp. Ch 3) 7 times. 1 sc in next ch-3 sp.\*\* Miss next ch-2 sp. (Ch 2. Shell in next ch-2 sp) twice. Rep from \* around, ending at \*\*. Ch 2. Miss last ch-2 sp. Join with sl st to top of ch 3.

**8th rnd:** Sl st in each of next 2 dc and ch-2 sp. Beg shell in same sp as last sl st. (Shell in next ch-2 sp) twice. \*Ch 2. Miss next ch-2 sp. (1 sc in next ch-3 sp. Ch 3) 6 times. 1 sc in next ch-3 sp. Ch 2. Miss next ch-2 sp.\*\* (Shell in next ch-2 sp) 3 times. Rep from \* around, ending at \*\*. Join with sl st to top of ch 3.

**9th rnd:** Sl st in each of next 2 dc and ch-2 sp. Beg shell in same sp as last sl st. \*(Ch 2. 3 dc) 3 times in ch-2 sp of next shell. Ch 2. Shell in ch-2 sp of next shell. Ch 2. Miss next ch-2 sp. (1 sc in next ch-3 sp. Ch 3) 5 times. 1 sc in next ch-3 sp. Ch 2. Miss next ch-2 sp.\*\* Shell in ch-2 sp of next shell. Rep from \* around, ending at \*\*. Join with sl st to top of ch 3.

**10th rnd:** Sl st in each of next 2 dc and ch-2 sp. Beg shell in same sp as last sl st. \*Ch 2. Miss next ch-2 sp. (Shell in next ch-2 sp. Ch 2) twice. Miss next ch-2 sp. Shell in ch-2 sp of

next shell. Ch 2. Miss next ch-2 sp. (1 sc in next ch-3 sp. Ch 3) 4 times. 1 sc in next ch-3 sp. Ch 2. Miss next ch-2 sp.\*\* Shell in ch-2 sp of next shell. Rep from \* around, ending at \*\*. Join with sl st to top of ch 3.

**11th rnd:** Sl st in each of next 2 dc and ch-2 sp. Beg shell in same sp as last sl st. \*Ch 2. Miss next ch-2 sp. (Shell in next ch-2 sp) 3 times. Ch 2. Miss next ch-2 sp. Shell in ch-2 sp of next shell. Ch 2. Miss next ch-2 sp. (1 sc in next ch-3 sp. Ch 3) 3 times. 1 sc in next ch-3 sp. Ch 2. Miss next ch-2 sp.\*\* Shell in ch-2 sp of next shell. Rep from \* around, ending at \*\*. Join with sl st to top of ch 3.

**12th rnd:** Sl st in each of next 2 dc and ch-2 sp. Beg shell in same sp as last sl st. \*Ch 2. Miss next ch-2 sp. Shell in ch-2 sp of next shell. (Ch 2. 3 dc) 3 times in ch-2 sp of next shell. Ch 2. (Shell in ch-2 sp of next shell. Ch 2. Miss next ch-2 sp) twice. (1 sc in next ch-3 sp. Ch 3) twice. 1 sc in next ch-3 sp. Ch 2. Miss next ch-2 sp.\*\* Shell in ch-2 sp of next shell. Rep from \* around, ending at \*\*. Join with sl st to top of ch 3.

**13th rnd:** Sl st in each of next 2 dc and ch-2 sp. Beg shell in same sp as last sl st. \*Ch 2. Miss next ch-2 sp. Shell in ch-2 sp of next shell. Ch 2. Miss next ch-2 sp. (Shell in next ch-2 sp. Ch 2) twice. Miss next ch-2 sp. (Shell in ch-2 sp of next shell. Ch 2. Miss next ch-2 sp) twice. 1 sc in next ch-3 sp. Ch 3. 1 sc in next ch-3 sp. Ch 2. Miss next ch-2 sp.\*\* Shell in ch-2 sp

of next shell. Rep from \* around, ending at \*\*. Join with sl st to top of ch 3.

**14th rnd:** Sl st in each of next 2 dc and ch-2 sp. Beg shell in same sp as last sl st. \*(Ch 2. Miss next ch-2 sp. Shell in ch-2 sp of next shell) twice. Shell in next ch-2 sp. Shell in ch-2 sp of next shell. (Ch 2. Miss next ch-2 sp. Shell in ch-2 sp of next shell) twice. Ch 2. Miss next ch-2 sp. 1 sc in next ch-3 sp. Ch 2. Miss next ch-2 sp.\*\* Shell in ch-2 sp of next shell. Rep from \* around, ending at \*\*. Join with sl st to top of ch 3.

**15th rnd:** Sl st in each of next 2 dc and ch-2 sp. Beg shell in same sp as last sl st. \*(Ch 2. Miss next ch-2 sp. Shell in ch-2 sp of next shell) twice. (Ch 2. 3 dc) 3 times in ch-2 sp of next shell. (Ch 2. Shell in ch-2 sp of next shell. Miss next ch-2 sp) twice. Ch 2. Shell in ch-2 sp of next shell. Ch 2. Miss next (ch-2 sp, sc and ch-2 sp).\*\* Shell in ch-2 sp of next shell. Rep from \* around, ending at \*\*. Join with sl st to top of ch 3.

**16th rnd:** Sl st in each of next 2 dc and ch-2 sp. Beg shell in same sp as last sl st. \*(Ch 2. Miss next ch-2 sp. Shell in ch-2 sp of next shell) twice. Ch 2. Miss next ch-2 sp. (Shell in next ch-2 sp. Ch 2) twice - corner 2 shells and ch-2 sp made. Miss next ch-2 sp. (Shell in ch-2 sp of next shell. Ch 2. Miss next ch-2 sp) 3 times.\*\* Shell in ch-2 sp of next shell. Rep from \* around, ending at \*\*. Join with sl st to top of ch 3.

**17th rnd:** Sl st in each of next 2 dc and ch-2 sp. Beg shell in same sp as

last sl st. \*(Ch 2. Miss next ch-2 sp. Shell in ch-2 sp of next shell) 3 times. Shell in next corner ch-2 sp - corner shell made. Shell in ch-2 sp of next shell. (Ch 2. Miss next ch-2 sp. Shell in ch-2 sp of next shell) 3 times. Ch 2. Miss next ch-2 sp.\*\* Shell in ch-2 sp of next shell. Rep from \* around, ending at \*\*. Join with sl st to top of ch 3.

**18th rnd:** Sl st in each of next 2 dc and ch-2 sp. Beg shell in same sp as last sl st. \*(Ch 2. Miss next ch-2 sp. Shell in ch-2 sp of next shell) 3 times. (Ch 2. 3 dc) 3 times in ch-2 sp of next corner shell - corner three 3-dc groups and two ch-2 sps made. (Ch 2. Shell in ch-2 sp of next shell. Miss next ch-2 sp) 4 times. Ch 2.\*\* Shell in ch-2 sp of next shell. Rep from \* around, ending at \*\*. Join with sl st to top of ch 3.

Rep 16th to 18th rnds for pat **0 (1-2-3-4)** time(s) more, noting that 2 more reps of shells will be worked between corner sts after each pat rep. Fasten off at end of last rep.

**Shape armholes: 1st row:** Join yarn with sl st in ch-2 sp of **3rd (4th-6th-7th-8th)** shell before next corner ch-2 sp. Beg shell in same sp as last sl st. \*(Ch 2. Miss next ch-2 sp. Shell in ch-2 sp of next shell) **2 (3-5-6-7)** times. Ch 2. Miss next ch-2 sp. (Shell in next ch-2 sp. Ch 2) twice - corner 2 shells and ch-2 sp made.\*\* Miss next ch-2 sp. (Shell in ch-2 sp of next shell. Ch 2. Miss next ch-2 sp) **5 (6-6-7-8)** times. Shell in next ch-2 sp of next shell. Rep from \* to \*\*.



Miss next ch-2 sp. (Shell in ch-2 sp of next shell. Ch 2. Miss next ch-2 sp) **2 (3-5-6-8)** times. Shell in ch-2 sp of next shell. **Turn.** Leave rem sts unworked.

**2nd row:** Sl st in each of first 3 dc and ch-2 sp. Beg shell in same sp as last sl st. \*(Ch 2. Miss next ch-2 sp. Shell in ch-2 sp of next shell) **3 (4-6-7-8)** times. *Shell in next corner ch-2 sp - corner shell made.\*\** Shell in ch-2 sp of next shell. (Ch 2. Miss next ch-2 sp. Shell in ch-2 sp of next shell) **5 (6-6-7-9)** times. Ch 2. Shell in next ch-2 sp of next shell. Rep from \* to \*\*. Shell in ch-2 sp of next shell. (Ch 2. Miss next ch-2 sp. Shell in ch-2 sp of next shell) **3 (4-6-7-8)** times. Turn.

**3rd row:** Sl st in each of next 2 dc and ch-2 sp. Beg shell in same sp as last sl st. \*(Ch 2. Miss next ch-2 sp. Shell in ch-2 sp of next shell) **3 (4-6-7-8)** times. (Ch 2. 3 dc) 3 times in ch-2 sp of next corner shell - corner three 3-dc groups and two ch-2 sps made.\*\* (Ch 2. Shell in ch-2 sp of next shell. Miss next ch-2 sp) **6 (7-7-8-9)** times. Ch 2. Shell in ch-2 sp of next shell. Rep from \* to \*\*. (Ch 2. Miss next ch-2 sp. Shell in ch-2 sp of next shell) **4 (5-7-8-9)** times. Fasten off.

**Left and Right Front** (make alike, noting 1st row is RS for Left Front and WS for Right Front).

\*\*\*Ch 4.

**1st row:** (2 dc. Ch 2. 3 dc) in 4th ch from hook. Turn.

**2nd row:** Sl st in each of first 3 dc and ch-2 sp. Ch 3. [2 dc. (Ch 2. 3 dc) twice] all in same sp as last sl st. Turn.

**3rd row:** Sl st in each of first 3 dc and ch-2 sp. Beg shell in same sp as last sl st. Ch 2. Shell in next ch-2 sp. Turn.

**4th row:** Sl st in each of first 3 dc and ch-2 sp. Beg shell in same sp as last sl st. Shell in next ch-2 sp. Shell in ch-2 sp of last shell. Turn.

**5th row:** Sl st in each of first 3 dc and ch-2 sp. Beg shell in same sp as last sl st. Ch 2. [(3 dc. Ch 2) twice. 3 dc] all in ch-2 sp of next shell. Ch 2. Shell in ch-2 sp of last shell. Turn.

**6th row:** Sl st in each of first 3 dc and ch-2 sp. Beg shell in same sp as last sl st. Ch 2. Miss next ch-2 sp. (Shell in next ch-2 sp. Ch 2) twice. Miss next ch-2 sp. Shell in ch-2 sp of last shell. Turn.

**7th row:** Sl st in each of first 3 dc and ch-2 sp. Beg shell in same sp as last sl st. Ch 2. Miss next ch-2 sp. Shell in ch-2 sp of next shell. Shell in next ch-2 sp corner. Shell in ch-2 sp of next shell. Ch 2. Miss next ch-2 sp. Shell in ch-2 sp of last shell. Turn.

**8th row:** Sl st in each of first 3 dc and ch-2 sp. Beg shell in same sp as last sl st. Ch 2. Miss next ch-2 sp. Shell in ch-2 sp of next shell. Ch 2. [(3 dc. Ch 2) twice. 3 dc] all in ch-2 sp of next shell. Ch 2. Shell in ch-2 sp of next shell. Ch 2. Miss next ch-2 sp. Shell in ch-2 sp of last shell. Turn.

**9th row:** Sl st in each of first 3 dc and ch-2 sp. Beg shell in same sp as last

sl st. Ch 2. Miss next ch-2 sp. Shell in ch-2 sp of next shell. Miss next ch-2 sp. (Ch 2. Shell in next ch-2 sp) twice - corner 2 shells and ch-2 sp made. (Ch 2. Miss next ch-2 sp. Shell in ch-2 sp of next shell) twice. Turn.

**10th row:** Sl st in each of first 3 dc and ch-2 sp. Beg shell in same sp as last sl st. (Ch 2. Miss next ch-2 sp. Shell in ch-2 sp of next shell) twice. *Shell in next corner ch-2 sp - corner shell made.* (Shell in ch-2 sp of next shell. Ch 2. Miss next ch-2 sp) twice. Shell in ch-2 sp of last shell. Turn.

**11th row:** Sl st in each of first 3 dc and ch-2 sp. Beg shell in same sp as last sl st. (Ch 2. Miss next ch-2 sp. Shell in ch-2 sp of next shell) twice. Ch 2. [(3 dc. Ch 2) twice. 3 dc] all in ch-2 sp of next shell - corner three 3-dc groups and two ch-2 sps made. Ch 2. Shell in ch-2 sp of next shell. (Ch 2. Miss next ch-2 sp. Shell in ch-2 sp of next shell) twice. Turn.

**12th row:** Sl st in each of first 3 dc and ch-2 sp. Beg shell in same sp as last sl st. (Ch 2. Miss next ch-2 sp. Shell in ch-2 sp of next shell) twice. Miss next ch-2 sp. (Ch 2. Shell in next ch-2 sp) twice - corner 2 shells and ch-2 sp made. (Ch 2. Miss next ch-2 sp. Shell in ch-2 sp of next shell) 3 times. Turn. \*\*\*

Rep 10th to 12th rnds for pat **0 (1-2-3-4)** time(s) more, noting that 1 more rep of shells will be worked before and after corner sts after each pat rep.

Proceed as follows:

**1st row:** (RS). Sl st in each of first 3 dc and ch-2 sp. Beg shell in same sp as last sl st. (Ch 2. Miss next ch-2 sp. Shell in ch-2 sp of next shell) **3 (4-5-6-7)** times. **Turn.** Leave rem sts unworked.

**2nd row:** Sl st in each of first 3 dc and ch-2 sp. Beg shell in same sp as last sl st. \*Ch 2. Miss next ch-2 sp. Shell in ch-2 sp of next shell. Rep from \* to end of row. Turn.

Rep last row until work from bottom edge measures same length as Back to beg of armhole, ending at armhole edge.

**Shape armhole: 1st row:** Sl st in each of first 3 dc and ch-2 sp. Beg shell in same sp as last sl st. \*Ch 2. Miss next ch-2 sp. Shell in ch-2 sp of next shell. Rep from \* to last **1 (1-1-1-2)** shell(s). **Turn.** Leave last shell(s) unworked.

**2nd row:** Sl st in each of first 3 dc and ch-2 sp. Beg shell in same sp as last sl st. \*Ch 2. Miss next ch-2 sp. Shell in ch-2 sp of next shell. Rep from \* to end of row. Turn.

Rep last row until armhole measures 5" [12.5 cm] less than armhole for Back, ending with a WS row.

**Shape neck edge: 1st row:** Sl st in each of first 3 dc and ch-2 sp. Beg shell in same sp as last sl st. \*Ch 2. Miss next ch-2 sp. Shell in ch-2 sp of next shell. Rep from \* to last shell. **Turn.** Leave last shell unworked.



**2nd row:** Sl st in each of first 3 dc and ch-2 sp. Beg shell in same sp as last sl st. \*Ch 2. Miss next ch-2 sp. Shell in ch-2 sp of next shell. Rep from \* to end of row. Turn.

Rep last row 0 (0-0-0-2) times more. Rep last 2 (2-2-2-4) rows until 2 (2-3-3-4) shells rem, then rep 2nd row only until armhole measures same length as Back, ending with a RS row. Fasten off.

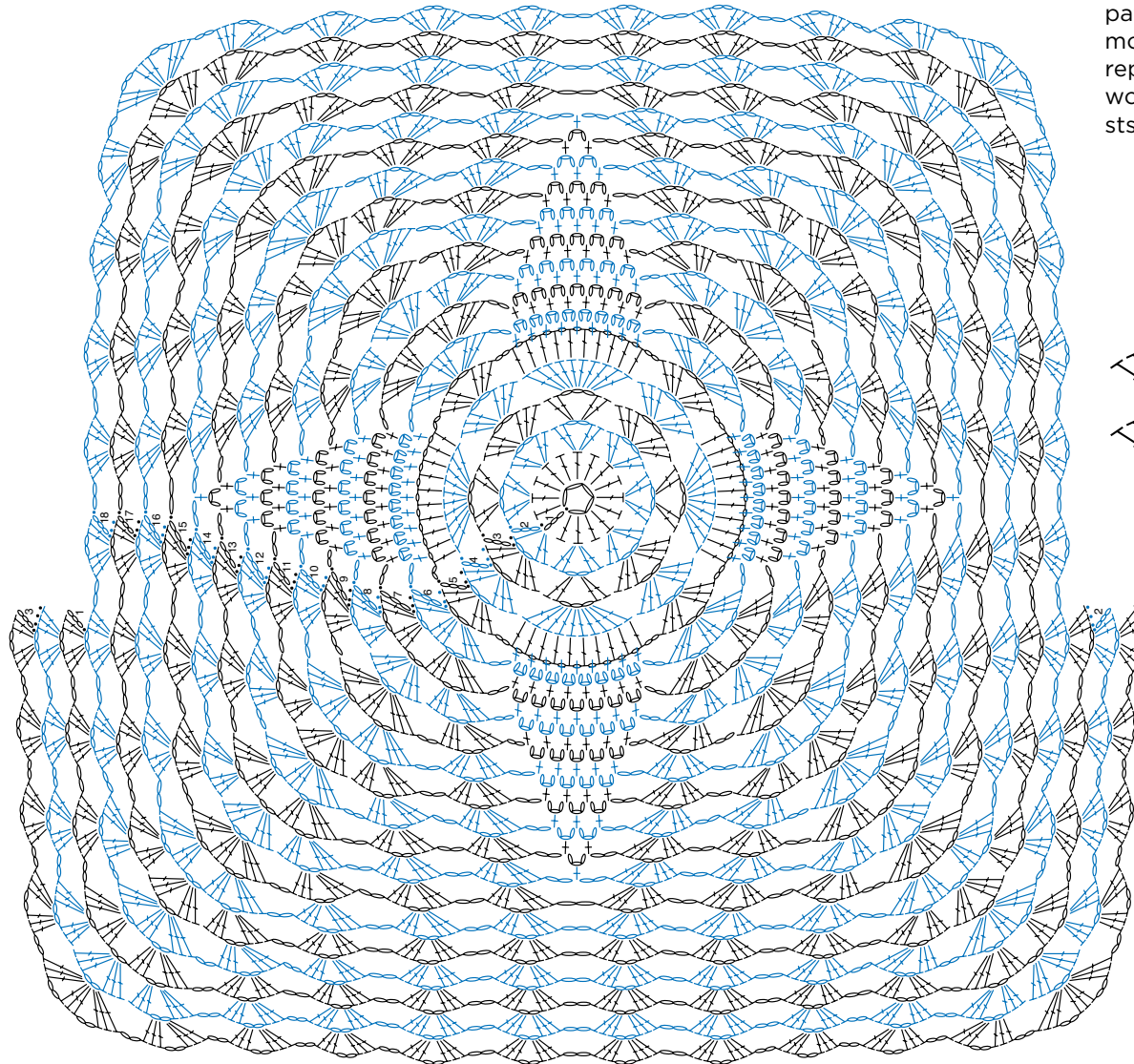
### SLEEVES

Work from \*\*\* to \*\*\* as given for Fronts. Rep 10th to 12th rnds for pat 2 (3-3-4-4) times more, noting that 1 more rep of shells will be worked before and after corner sts after each pat rep.

### FINISHING

Sew shoulder seams. Sew in sleeves, matching foundation chain with shoulder seam and leave last row as bottom edge of sleeve. Sew side seams.



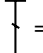
**Ties:** (make 2). Ch 45. Sl st in 2nd ch from hook and each ch to end of chain. Sew ties to first row of V-neck shaping. If desired, attach 1 bead to end of each Tie as shown in photo.

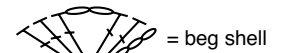


### BACK

Rep 16th to 18th rnds for pat 0 (1-2-3-4) time(s) more, noting that 2 more reps of shells will be worked between corner sts after each pat rep.

### Key

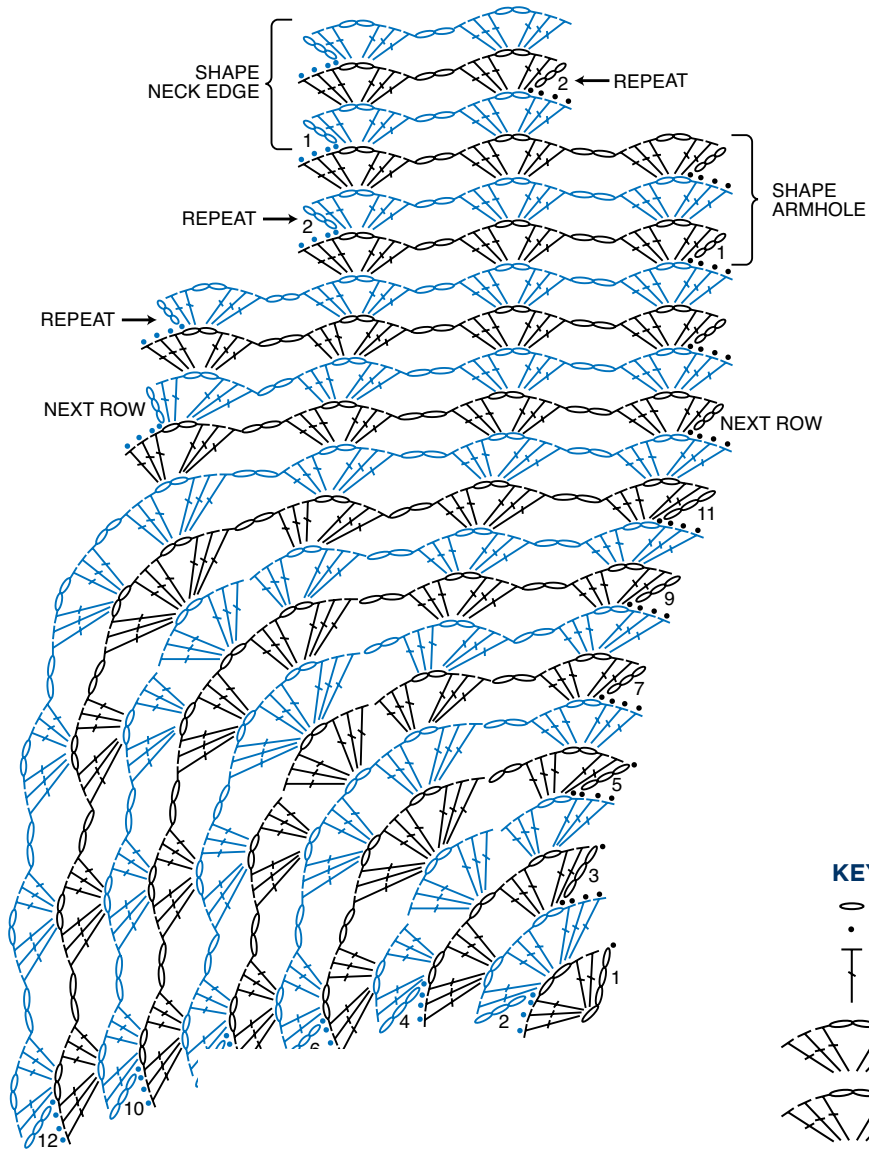
-  = chain (ch)
-  = slip st (sl st)
-  = double crochet (dc)





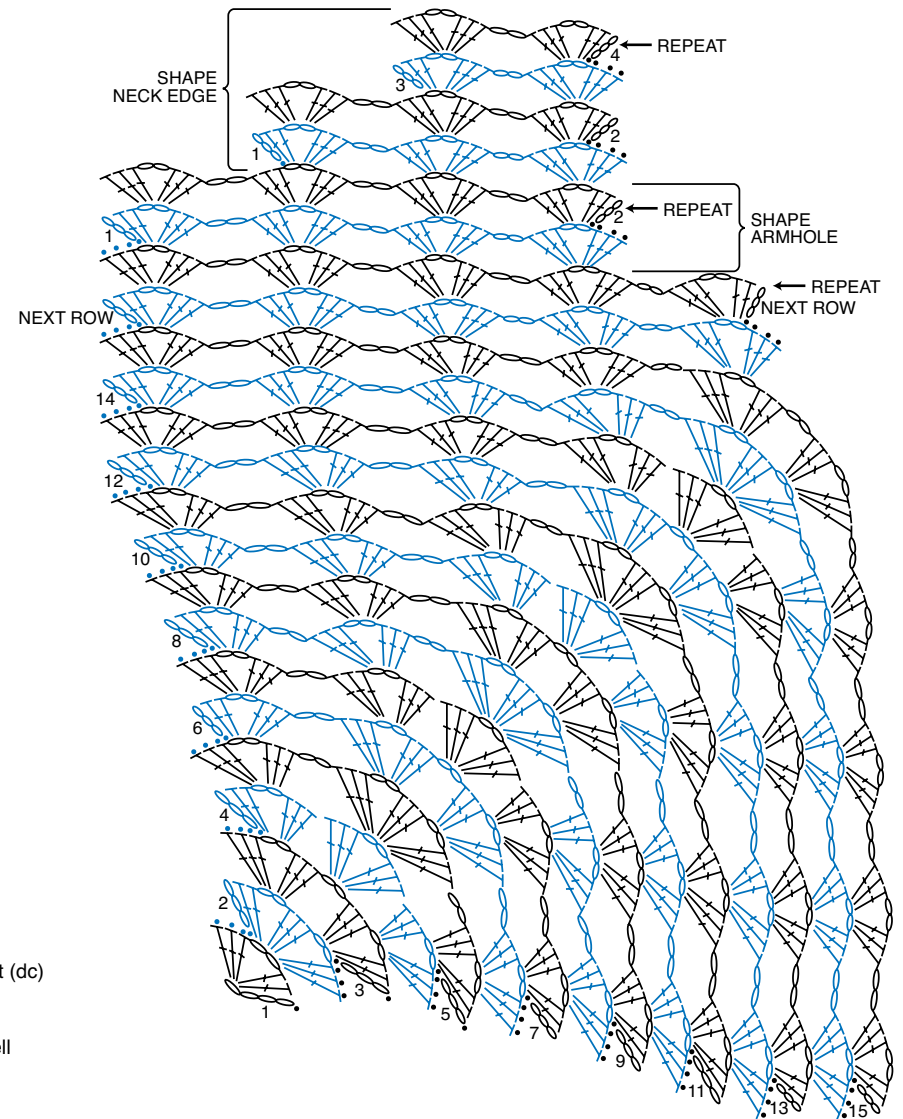
### LEFT AND RIGHT FRONT

Size XS/S



### LEFT AND RIGHT FRONT

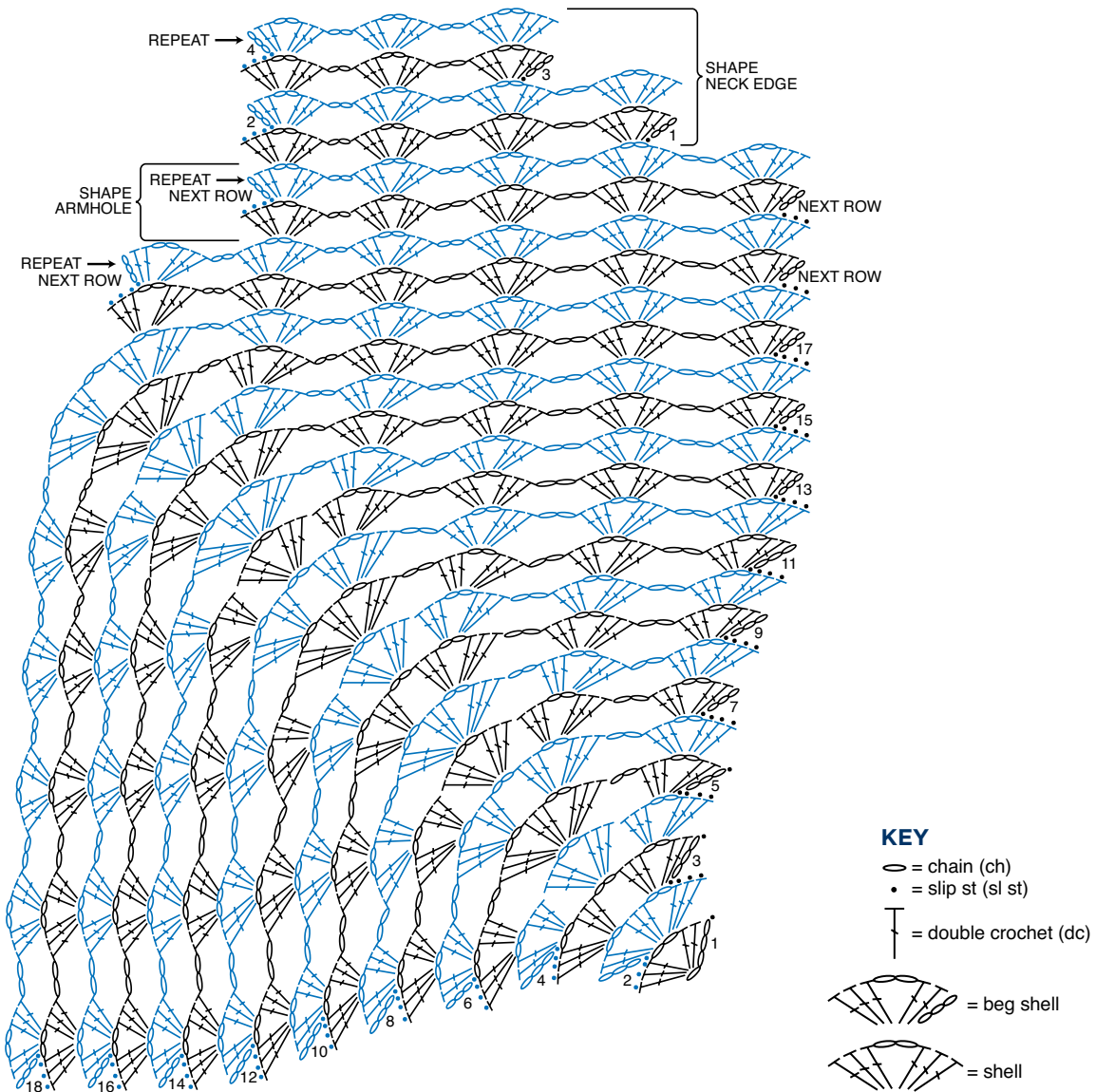
Size M





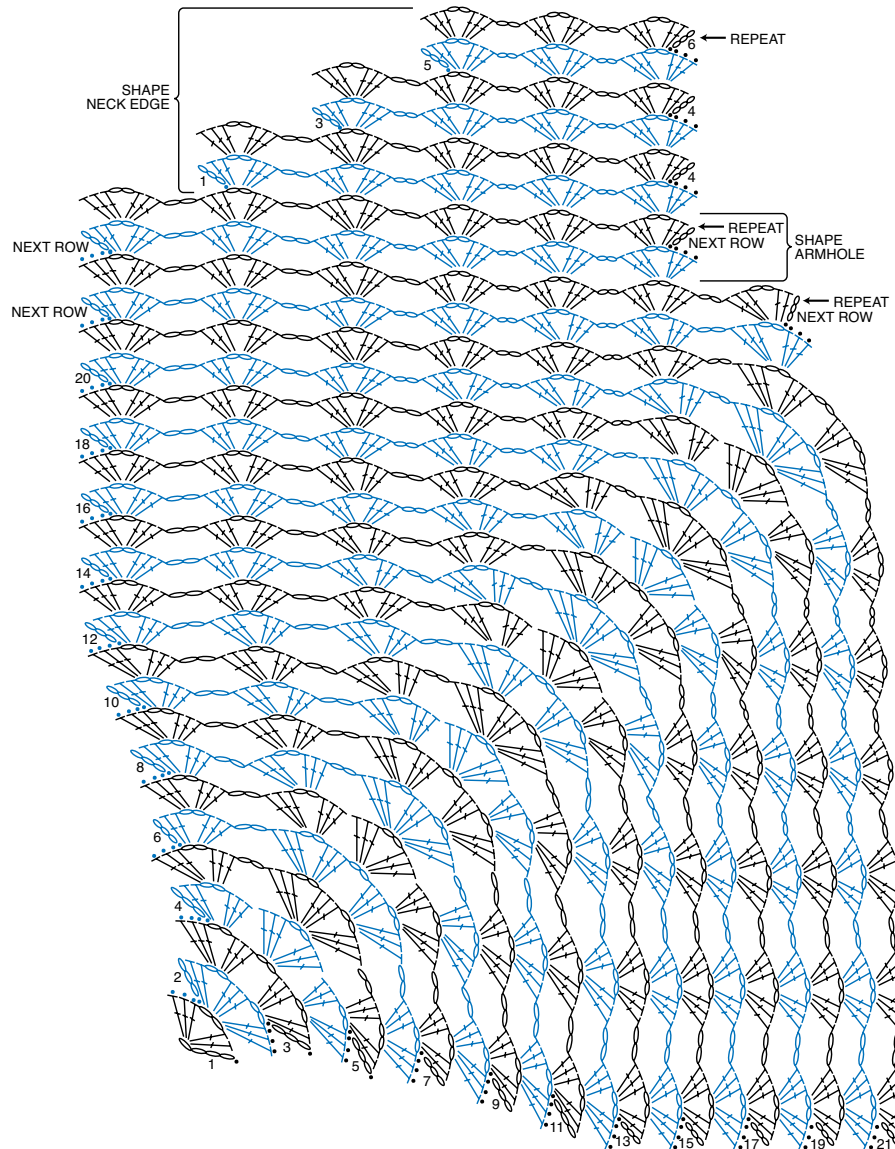
## LEFT AND RIGHT FRONT

Size L/XL





LEFT AND RIGHT FRONT  
Size 2/3XL



KEY

- = chain (ch)
- = slip st (sl st)
- ⌋ = double crochet (dc)



= beg shell



= shell



## LEFT AND RIGHT FRONT

Size 4/5XL

