

DROPS Design®

www.garnstudio.com

Such A Doll by DROPS Design

Crochet DROPS bolero with lace pattern and double crochet in "Safran". Size: S - XXXL.

DROPS design: Pattern no e-224

Yarn group A

Size: S/M - L/XL - XXL/XXXL

All measurements in chart in cm. Conversion to inch - see page 4.

Materials:

DROPS SAFRAN from Garnstudio

150-200-250 g color no 17, white

DROPS HOOK size 4 mm / G/6 - or size needed to get 20 dc x 12 rows = 4" x 4" (10 x 10 cm), or 1 repetition of A.2 = width 8 cm / 3".



DROPS 152-20

Yarn prices (per 24.03.2020)

Yarn (weight)	Content	United States
DROPS Safran uni colour (50g)	100% Cotton	2.35 USD

 You can get the yarn to make this pattern from **7.05\$***.

(*) Pattern prices are calculated from the smallest size / cheapest colour. You will find a prices table in this print to help you calculate the price for other sizes.

All yarns are DROPS yarns. Color charts and updated retailer lists at www.garnstudio.com

Pattern for DROPS 152-20

CROCHET INFO:

Replace first dc at beg of every dc row with 3 ch.

CROCHET TIP:

To avoid a tight edge, work 5 ch more to turn with in each side of piece.

PATTERN:

See diagrams A.1-A.6. The diagrams show all rows in pattern seen from RS.

BOLERO:

Piece is worked in two parts and sewn tog mid back.

FIRST SIDE:

Work 61-81-100 loose ch on hook size 4 mm / G/6 with Safran. Work first row as follows (= RS): 1 dc in the 4th ch from hook (= 2 dc). Then 1-0-1 dc in each of the next 1-0-5 ch, * skip ch 1, 1 dc in each of the next 6 ch *, repeat from *-* 7-10-12 more times (8-11-13 times in total) = 51-68-85 dc. Turn and work 1 row with 1 dc in every dc from previous row. NOTE! This row is the second row in diagram A.1, A.2, A.3 and A.4.

Then work as follows from RS – READ CROCHET TIP:

ROW 1: (= 3rd row in diagram A.1, A.2, A.3 and A.4). Work PATTERN according to diagram A.1 (= 8 dc), then work A.2 (= 18 dc), A.3 (= 17 dc) 1-2-3 times in width, finish with A.4 (= 8 dc).

Continue pattern according to diagram A.1, A.2, A.3 and A.4 back and forth the same way until 11th row in pattern. On this row work 9 dtr instead of dc in each side of piece (i.e. in A.1 and A.4, first st in A.2 and last st in A.3).

When A.X has been worked 1 time vertically, continue the middle 2-3-4 repetitions as before, AT THE SAME TIME inc repetitions in each side of piece (i.e. A.1 and A.4) to one new repetition of pattern in each side of sleeve (= A.Y). When A.Y has been worked 1 time vertically, insert a marker in this row. Cut the yarn.

Then work as follows from RS:

ROW 1: 6 loose ch. Beg on 5th row in A.X and work as follows: A.2 1 time over the first repetition in right side of piece (= the inc repetition of A.1), then work A.3 3-4-5 times in total. Finish with 8 loose ch (includes 3 ch to turn with = 1 dc). Turn piece.

ROW 2: Work A.5 (=6 dc), beg in the 4th ch from hook. NOTE! The 3 ch to turn with = first dc in A.5. Continue with A.3 3-4-5 times in total, A.2 1 time, and 1st row in A.5 in the next 6 ch. Turn piece.

ROW 3: Work 5 ch to turn with - read CROCHET TIP. Then work pattern as before. Continue this pattern back and forth until piece measures 48-48-57 cm / 19"-19"-22½" from beg edge and 3-3-4 repetitions have been worked vertically from marker. Then work an edge in dc according to diagram A.6. NOTE! Work according to 2nd row in diagram.

Fasten off.

Work another part the same way.

ASSEMBLY:

Sew the two parts tog mid back

Fold the bolero double alongside, and sew tog from bottom of each sleeve and up to where marker was inserted in each side - sew edge to edge to avoid a chunky seam.

Diagram explanations

† = dc

⊖ = work 2 dc in same st as follows: 1 dc, but wait with last pull through (there are now 2 loops on hook), work 1 dc in same st. Pull last loop through all 3 loops on hook.

▬ = 3 ch

× = sc

● = ch

⋯ = 3 ch

‡ = dtr

★ = When A.3 is repeated several times, do not work dtr. Only work dtr on last repetition out towards the side on piece.

←● = after inserting marker in piece, work 3 repetitions vertically of A.X by repeating A.2 and A.3 from 5th row in A.X.

←★ = When piece measures approx. 48-48-57 cm / 19"-19"-22½" and 3-3-4 repetitions have been worked vertically from marker, work dc over all sts as shown in A.6

Diagram for DROPS 152-20

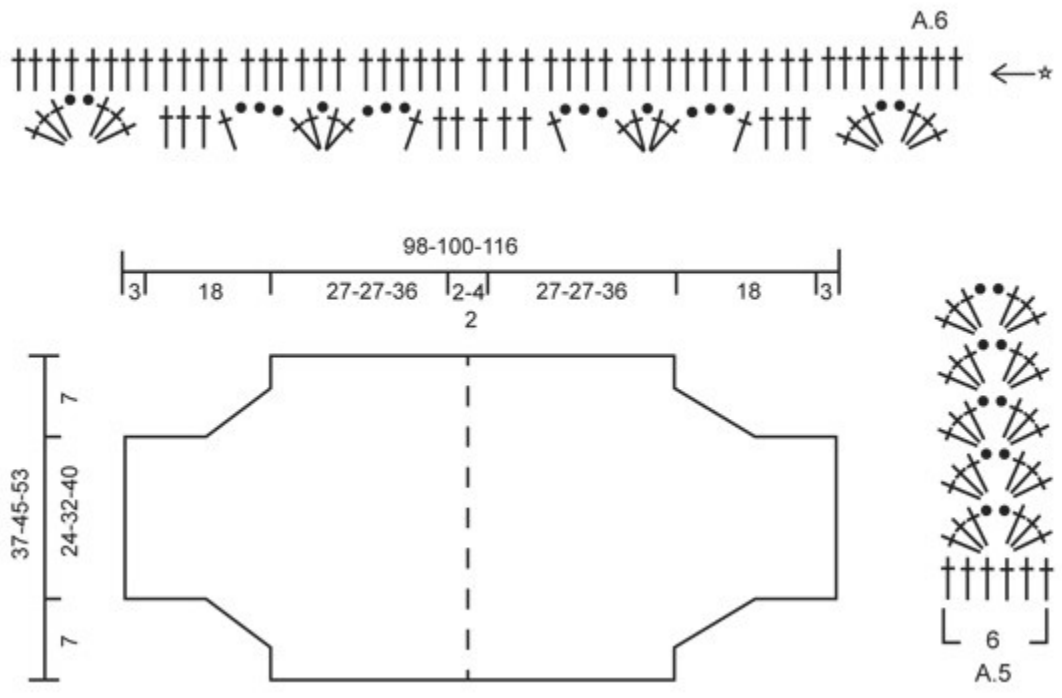
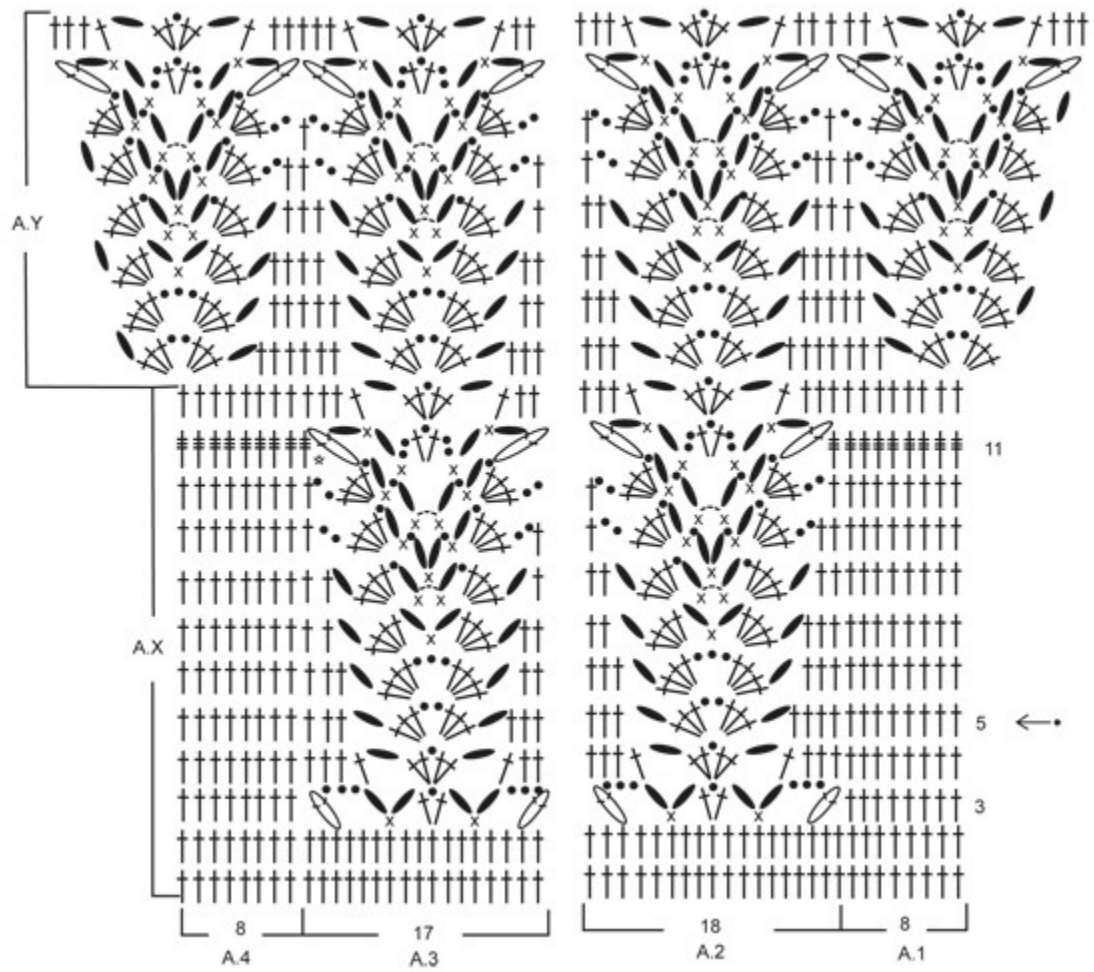
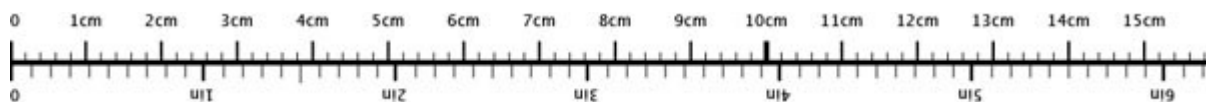


Diagram for DROPS 152-20



♥ Have you made this or any other of our designs? Tag your pictures in social media with #dropsdesign so we can see them!

Use me to measure your project!



To get the measurement tape to be 100 % accurate, you have to print out the pattern in full scale (and not use the print option "fit to page").

Do you need help with this pattern?

You'll find 5 tutorial videos, a Comments/Questions area and more by visiting the pattern on garnstudio.com. **Have you purchased DROPS yarn to make this pattern?** Then you are entitled to receive help from the store that sold you the yarn.

We take pride in providing patterns that are correct and easy to understand. All patterns are translated from Norwegian and you can always check the original pattern for measurements and calculations.

If we get a report of a potential error, we will review the pattern and make the correction if necessary. This will be done normally within 7 to 10 working days. If no correction is made, it means that we weren't able to find any error/mistake.

Wondering where you can buy the yarn for this pattern?

Try a DROPS Super Store!

- Wool Warehouse Direct Ltd

DROPS

SOCK-A-LICIOUS

30% discount



DROPS NORD MIX
Everyday comfort in alpaca and wool

DROPS DELIGHT PRINT
Superwash treated sock wool

DROPS Fabel Print
Superwash treated sock wool

March 1st to 31st ✦ [garnstudio.com/sale](https://www.garnstudio.com/sale)



© 1982-2020 DROPS Design A/S. We reserve all rights. This document, including all its sub-sections, has copyrights. Read more about what you can do with our patterns at the bottom of each pattern on our site.