

DROPS Design®

www.garnstudio.com

Caroline by DROPS Design

Crochet DROPS bolero with lace pattern in "BabyAlpaca Silk". Size: S - XXXL

DROPS design: Pattern no bs-045

Yarn group A

Size: S/M - L/XL - XXL/XXXL

To fit chest measurements:

84/94 - 100/110 - 120/130 cm /

33"/37" - 39½"/43½" - 47¼"/51½"

Materials:

DROPS BABYALPACA SILK from Garnstudio
200-250-300 g color no 6235, gray blue

DROPS CROCHET HOOK size 3 mm / C – or size needed to
get 24 dc x 13 rows = 10 x 10 cm / 4" x 4".



DROPS 147-4

Yarn prices (per 24.03.2020)

| Yarn (weight) | Content | United States |
|--|----------------------|---------------|
| DROPS BabyAlpaca Silk uni colour (50g) | 70% Alpaca, 30% Silk | 6.80 USD |

 You can get the yarn to make this pattern from **27.20\$***.

(*) Pattern prices are calculated from the smallest size / cheapest colour. You will find a prices table in this print to help you calculate the price for other sizes.

All yarns are DROPS yarns. Color charts and updated retailer lists at www.garnstudio.com

Pattern for DROPS 147-4

CROCHET INFO:

Replace first dc on every row with 3 ch.

PATTERN:

See diagrams A.1 and A.2 - NOTE: The first row with sc is not in the repetition and is not repeated upwards.

DECREASE TIP:

Crochet 2 dc tog as follows: Work 1 dc in first st but wait with last pull through, work 1 dc in next st but on last pull through, pull thread through all 3 loops on hook.

BOLERO:

Worked from mid back. First work one side and down to beg of sleeve, then work the other side and down to the other sleeve. Then sew the sleeve seams and work 1 flounce around the entire opening.

FIRST SIDE:

Ch 113-135-156 with Baby Alpaca Silk on hook size 3 mm / C. Turn and work 1 sc in 2nd ch from hook, continue with 1 sc in each of the next 3-1-4 ch, * skip ch 1, 1 sc in each of the next 5 ch *, repeat from *-* the entire row = 94-112-130 sc (first ch on row is NOT counted as one sc).

Continue with diagram A.1 over the first 90-108-126 sc and diagram A.2 over the last 4 sc – READ CROCHET TIP! Repeat pattern until finished measurements.

AT THE SAME TIME when piece measures 27-30-33 cm / 10½"-11 ¾"-13", insert 1 marker in the side (this marks how far up to sew the sleeve seam afterwards). On next row dec 1 dc each side by working 2nd and 3rd dc and the 2 next to last dc tog – SEE DECREASE TIP!

Repeat dec on every row a total of 16-20-24 times = 62-72-82 sts remain - NOTE: When dec work only dc over the sts that do not fit the pattern.

Continue with pattern until piece measures approx. 47-50-53 cm / 18½"-19 ¾"-21" in total – finish after a row with only dc, cut the thread.

SECOND SIDE:

Work 1 sc in each of the 94-112-130 sc worked on 1st row on first side (i.e. mid back). Then work pattern as on first side. Make sure to finish on same row in diagram at the bottom of sleeve in both sides.

ASSEMBLY:

Fold the bolero double across and sew tog from bottom of each sleeve and up to where

marker was inserted in each side – sew edge to edge to avoid a chunky seam.

FLOUNCE AROUND OPENING:

Work around the entire opening as follows (beg mid back):

ROUND 1:

1 sl st in first st, * ch 3, 1 sc in next dc *, repeat from *-* the entire round and finish with 3 ch and 1 sl st in sl st from beg of round - NOTE: make sure that an even number of ch-spaces has been worked otherwise 5th round will not fit.

ROUND 2:

Work 1 sl st and 1 sc in first ch-space, * ch 3, 1 sc in next ch-space *, repeat from *-* the entire round, finish with 1 sl st in first sc from beg of round.

Round 3 and 4: Work as 2nd round.

ROUND 5:

Work 1 sl st and 1 sc in first ch-space, * 8 ch, 1 sc in next ch-space, ch 1, 1 sc in next ch-space *, repeat from *-* the entire round, finish with 1 sl st in first sc from beg of round.

ROUND 6:

1 ch, 1 sc in first large ch-space, [* ch 4, 1 dc in the first ch made (= 1 picot), 1 sc in same ch-space *, repeat from *-* 2 more times (i.e. so that there are 3 picots in the large ch-space), 1 sc in the small ch-space (the one with only 1 ch between the large ch-spaces), 1 sc in next large ch-space], repeat from [-] the entire round, instead of last sc, work 1 sl st in first sc on round. Cut and fasten the thread.

FLOUNCE AT THE BOTTOM OF SLEEVE:

Work a shorter edge at the bottom of sleeve, only work 1st, 5th and 6th round of the flounce around the opening – NOTE: On 1st round skip 1 dc between every ch-space.

Diagram explanations

— = 1 ch

✕ = 1 sc

† = 1 dc

↑ = crochet direction

Diagram for DROPS 147-4

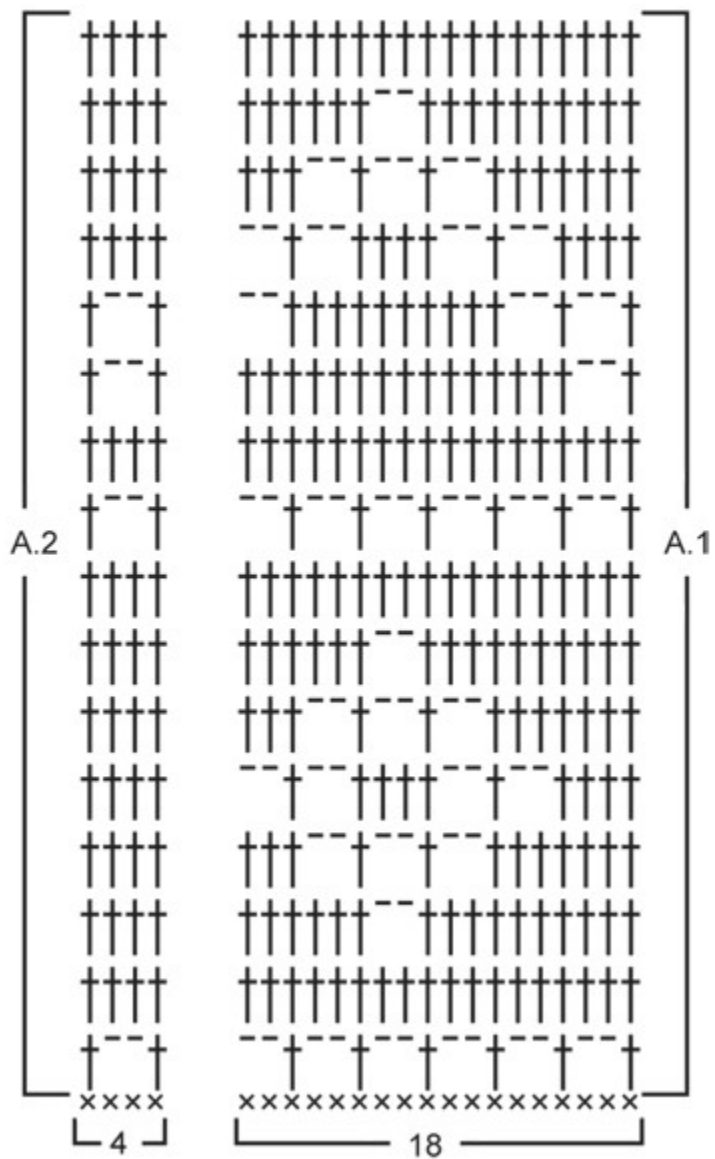
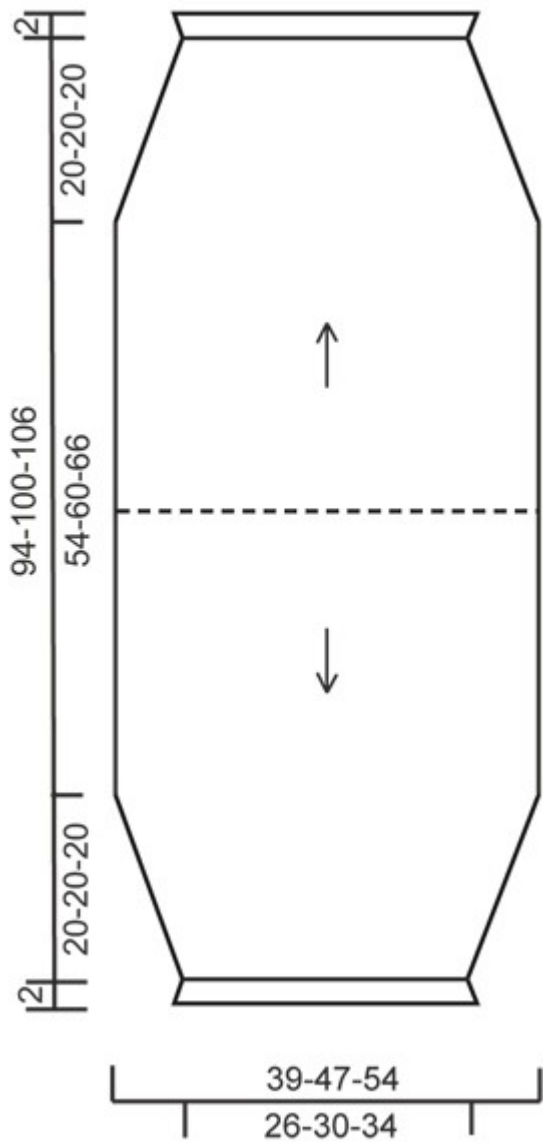
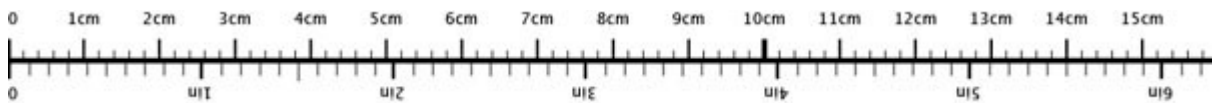


Diagram for DROPS 147-4



♥ Have you made this or any other of our designs? Tag your pictures in social media with #dropsdesign so we can see them!

Use me to measure your project!



To get the measurement tape to be 100 % accurate, you have to print out the pattern in full scale (and not use the print option "fit to page").

Do you need help with this pattern?

You'll find 6 tutorial videos, a Comments/Questions area and more by visiting the pattern on

garnstudio.com. **Have you purchased DROPS yarn to make this pattern?** Then you are entitled to receive help from the store that sold you the yarn.

We take pride in providing patterns that are correct and easy to understand. All patterns are translated from Norwegian and you can always check the original pattern for measurements and calculations.

If we get a report of a potential error, we will review the pattern and make the correction if necessary. This will be done normally within 7 to 10 working days. If no correction is made, it means that we weren't able to find any error/mistake.

Wondering where you can buy the yarn for this pattern?

Try a DROPS Super Store!

- Wool Warehouse Direct Ltd

DROPS
SOCK-A-LICIOUS

30%
discount

DROPS NORD MIX
Everyday comfort in alpaca and wool

DROPS DELIGHT PRINT
Superwash treated sock wool

DROPS Fabel Print
Superwash treated sock wool

March 1st to 31st ✦ [garnstudio.com/sale](https://www.garnstudio.com/sale)

