

# DROPS Design®

www.garnstudio.com

## Butterfly Queen by DROPS Design

Crocheted jacket worked in a square with lace pattern. Size: S - XXXL Piece is crocheted in DROPS Flora.

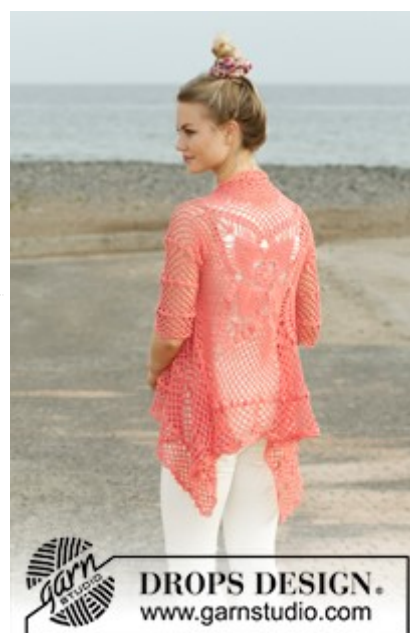
DROPS design: Pattern fl-033

Yarn group A

Size: S - M - L - XL - XXL - XXXL

Materials:

DROPS FLORA from Garnstudio (belongs to yarn group A)  
250-250-300-300-350-400 g colour no 20, peach pink



**DROPS 186-11**

Piece can also be crocheted with yarn from:

“Alternative yarn (yarn group A)” - see link below.

DROPS CROCHET HOOK SIZE 3.5 mm - or size needed to get  
22 treble crochets x 12 rows = 10 cm in width and 10 cm  
vertically.

## Yarn prices (per 24.03.2020)

Yarn (weight)	Content	UK
DROPS Flora uni colour (50g)	65% Wool, 35% Alpaca	2.20 GBP
DROPS Flora mix (50g)	65% Wool, 35% Alpaca	2.30 GBP

 You can get the yarn to make this pattern from **11.00£\***.

(\*) Pattern prices are calculated from the smallest size / cheapest colour. You will find a prices table in this print to help you calculate the price for other sizes.

All yarns are DROPS yarns. Color charts and updated retailer lists at [www.garnstudio.com](http://www.garnstudio.com)

## Pattern for DROPS 186-11

### INFORMATION FOR PATTERN:

#### PATTERN:

See diagrams A.1 to A.4.

#### CROCHET INFO (applies A.4):

Replace first double crochet at beginning of row with 1 chain stitch.

Replace first triple treble crochet at beginning of row with 5 chain stitches.

#### DECREASE TIP (applies to mid under sleeve):

Work 5 chain stitches, skip 1 double crochet + 1 chain space, work 1 double crochet around next chain space + 1 chain space (= 1 repetition decreased), continue pattern as before until 1 chain space remains + 1 double crochet on previous row, skip these stitches and finish with 1 double treble crochet in first chain stitch at beginning of previous row (= 1 repetition decreased).

-----

#### JACKET:

Worked in the round from mid back on back and outwards as a square, then work back and forth on front pieces. Work sleeves back and forth from body, then sew them together under sleeve.

Work 4 chain stitches on hook size 3.5 mm with Flora and form a ring with 1 slip stitch in first chain stitch. Then work pattern in the round according to diagram A.1b 4 times in total on round - diagram A.1a shows how rounds begin and end and is worked in addition to A.1b. REMEMBER THE CROCHET TENSION! When entire diagram A.1a and A.1b is cut the thread, and begin next round around chain space between last treble group worked and fasten thread with 1 slip stitch in this chain space.

Now work in the round according to diagram A.2 as follows: \* Work A.2b, repeat A.2c 6 times in total in width, A.2d \*, repeat from \*-\* 4 times in total on round - diagram A.2a shows how rounds begin and end and are worked in addition to A.2b/c/d. When entire diagram A.2a and A.2b have been worked, square measures approx. 36 x 36 cm. There are now 4 corner chain spaces (1 treble crochet + 6 chain stitches + 1 treble crochet) and 14 chain spaces along each of the sides on square. READ THE REST OF BODY BEFORE CONTINUING!

Continue to work as follows: \* Work A.3b around corner space, repeat A.3c until 1 chain

space remains before corner, work A.3d around next chain space \*, repeat from \*-\* 4 times in total on round – diagram A.3a shows how rounds begin and end and are worked in addition to A.3b/c/d.

AT THE SAME TIME when piece measures approx. 36-38-40-42-44-46 cm x 36-38-40-42-44-46 cm work armholes as follows: Work A.3 as before until first corner, work around chain space as before. Now work chain stitches until middle of next side (i.e. in the middle between first and second corner) as follows: Work 1 chain stitch for every chain stitch/double crochet skipped. Then work pattern as before until the middle between 3rd and 4th corner. Now work chain stitches until 4th corner as follows: Work 1 chain stitch for every chain stitch/double crochet skipped, work around chain space in corner and the rest of round as before. On next round work A.3 as before over all stitches again (i.e. adjust pattern over armholes so that round is correct).

Continue A.3 in the round (repeat the 9 rounds vertically) until square measures 68-70-72-74-76-78 cm x 68-70-72-74-76-78 cm (i.e. approx. 16 cm from armhole in all sizes) – adjust to finish after a round with treble groups. Cut the yarn and insert 1 marker in piece (between first and second corner).

#### FRONT PIECE:

Now work back and forth between first and second corner. NOTE! Work front pieces without increases. Read CROCHET INFO! Work A.4a around corner, repeat A.4b until 1 chain space remains before corner, work A.4c around this chain space and around corner. Continue pattern as shown in diagram and repeat A.4 vertically until row with treble groups has been worked 2 times in total vertically, then repeat only rows with chain spaces until piece measures approx. 19-20-21-22-23-24 cm from marker, then work row with treble groups 1 time in all sizes. Piece now measures 21-22-23-24-25-26 cm from marker. Fasten off. Work the same way on the other side (i.e. work back and forth between third and fourth corner).




















#### SLEEVE:

Work sleeve directly out from armhole on body. Work back and forth, top down and sew together when finished. Begin mid under sleeve and work as follows: Remember CROCHET INFO! Work A.4a around first chain space, repeat A.4b 15-16-17-18-19-20 times in total in width (adjust to distribute A.4b evenly along armhole, i.e. either 2 chain spaces must be worked around same chain space or skip 1 chain space), work A.4c around the last 2 chain spaces. Continue A.4 back and forth – AT THE SAME TIME when piece measures 4 cm (adjust to work next row with chain stitches/double crochets) decrease 1 repetition in each side – read DECREASE TIP. Decrease like this approx. every 8-8-8-6-6 cm 3-3-3-4-4 times in total = 12-13-14-15-16-17 chain spaces of 6 stitches after last decrease. Continue until piece measures approx. 28 cm in all sizes - finish after a row with chain spaces. Fasten off. Work the other sleeve the same way in the other side of piece.

**ASSEMBLY:**

Sew the seems under the sleeves, sew in the outermost stitches and make sure that the seam does not tighten the piece.

**Diagram explanations**

-  = double crochet in stitch
-  = double crochet around chain space
-  = 3 chain stitches
-  = 4 chain stitches
-  = 6 chain stitches
-  = 5 chain stitches
-  = 8 chain stitches
-  = 14 chain stitches
-  = 8 chain stitches, 1 slip stitch in double treble crochet, 18 chain stitches, 1 slip stitch in double treble crochet, 8 chain stitches
-  = treble crochet around chain space
-  = **TREBLE GROUP:** Work as follows around chain space: 3 treble crochets, 4 chain stitches, 3 treble crochets.
-  = **2 TREBLE CROCHETS WORKED TOGETHER:** Work 2 treble crochets around chain stitch ring but wait with last yarn over and pull through on both these treble crochets, make a yarn over and pull yarn over all 3 loops on hook
-  = double treble crochet around chain space
-  = round begins with 3 chain stitches and finishes with 1 slip stitch in 3rd chain stitch at beginning of round
-  = round begins with 3 chain stitches and finishes with 1 slip stitch in 3rd chain stitch at beginning of round, then work slip stitches until first chain space
-  = round begins with 1 chain stitch and finishes with 1 slip stitch in 1st chain stitch at beginning of round, then work slip stitches until first chain space
-  = round begins with 4 chain stitches and finishes with 1 slip stitch in 4th chain stitch at beginning of round Fasten off. Begin next round around chain space between the last treble group worked - fasten yarn with 1 slip stitch in chain space
-  = 4 chain stitches, form a ring with 1 slip stitch in first chain stitch - see point on circle, round begins and ends here
-  = 7 chain stitches

○ = 14 chain stitches

○ = 2 chain stitches, 1 double crochet around 18-chain space, 2 chain stitches

○ = 8 chain stitches, 1 half treble crochet in first chain stitch

■ = double treble crochet in double crochet

≡ = triple treble crochet around chain stitch/chain space

★ = this round has already been worked, begin on next round!

▽ = slip stitch in space arrow points to

← = shows where round continues

— = 1 chain stitch

### Diagram for DROPS 186-11

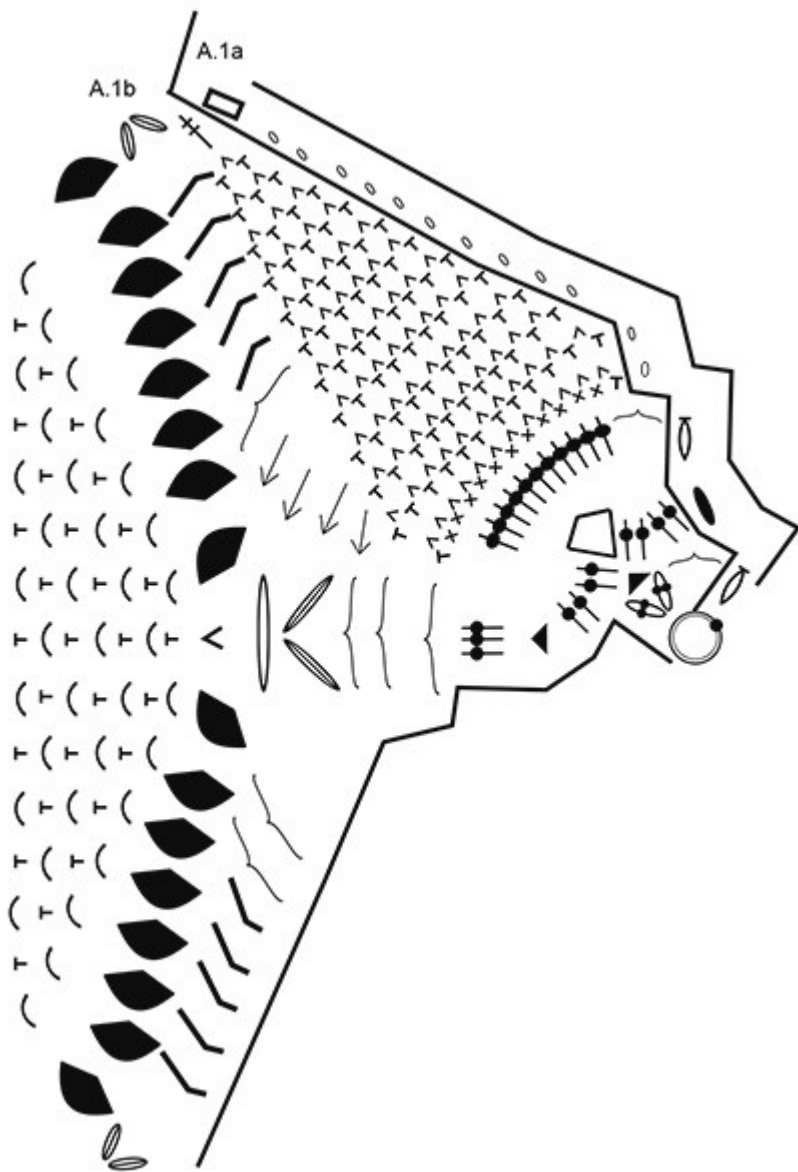


Diagram for DROPS 186-11

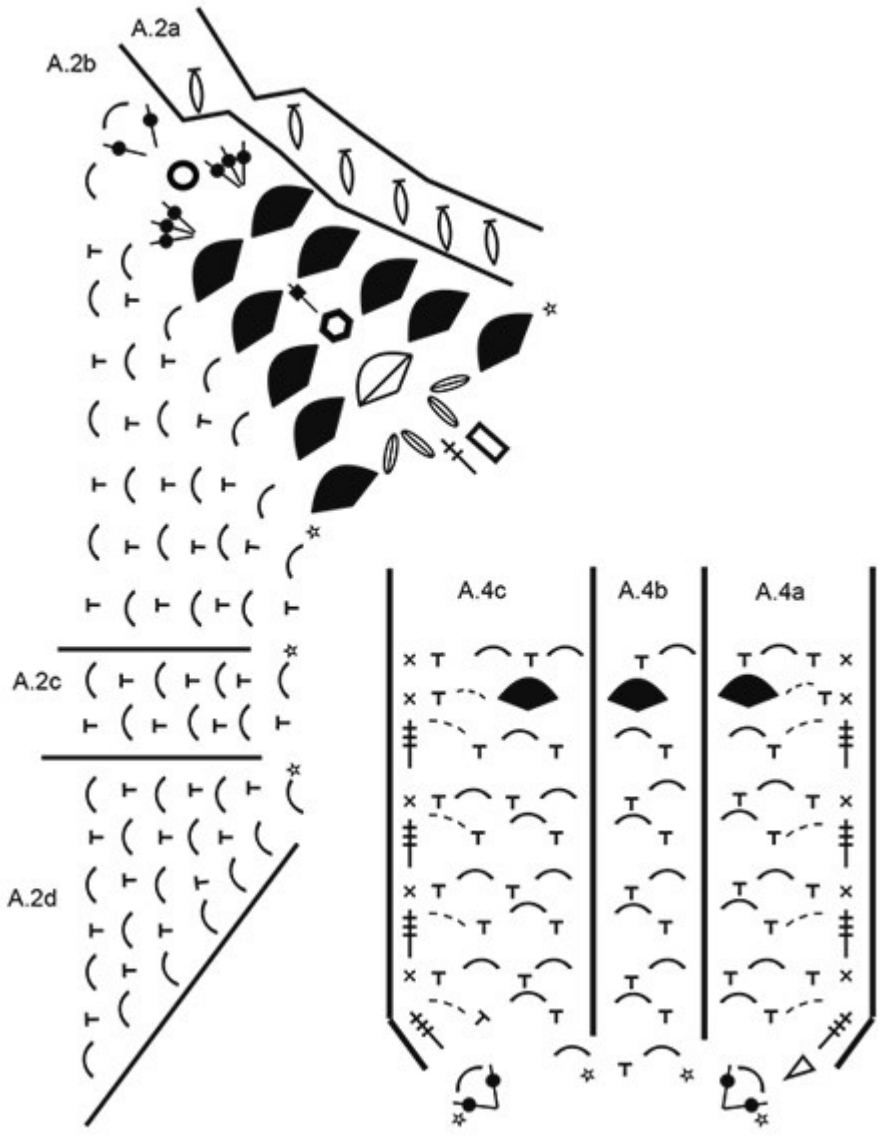
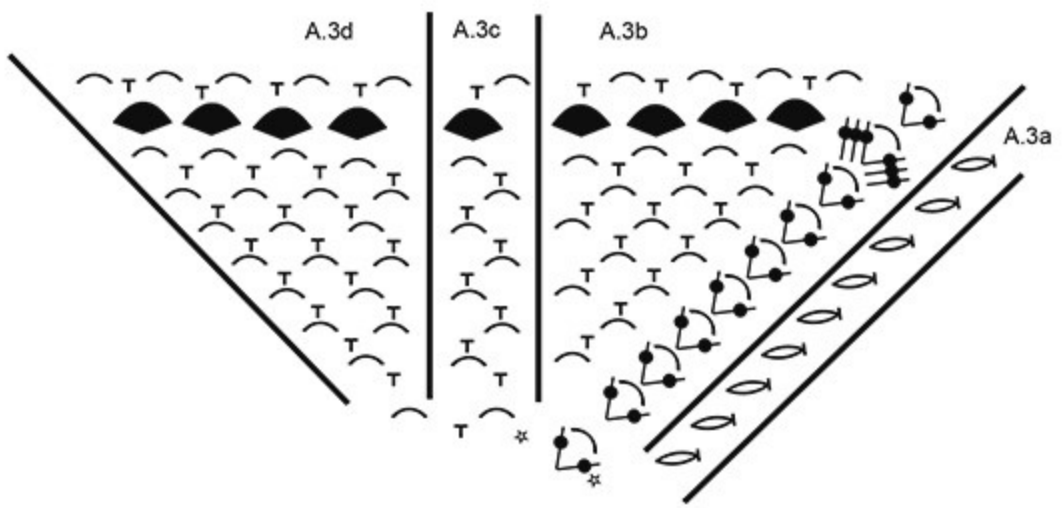
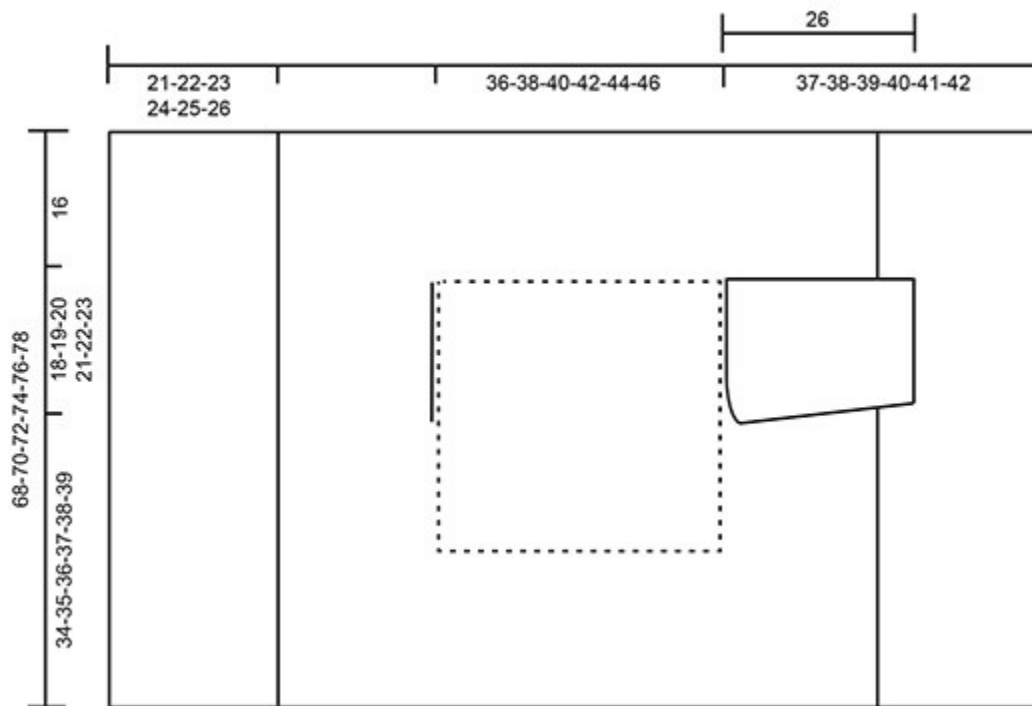


Diagram for DROPS 186-11

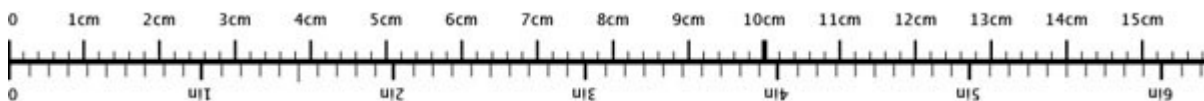


## Diagram for DROPS 186-11



♥ Have you made this or any other of our designs? Tag your pictures in social media with #dropsdesign so we can see them!

## Use me to measure your project!



To get the measurement tape to be 100 % accurate, you have to print out the pattern in full scale (and not use the print option "fit to page").

## Do you need help with this pattern?

You'll find 11 tutorial videos, a Comments/Questions area and more by visiting the pattern on [garnstudio.com](http://garnstudio.com). **Have you purchased DROPS yarn to make this pattern?** Then you are entitled to receive help from the store that sold you the yarn.

We take pride in providing patterns that are correct and easy to understand. All patterns are translated from Norwegian and you can always check the original pattern for measurements and calculations.

If we get a report of a potential error, we will review the pattern and make the correction if necessary. This will be done normally within 7 to 10 working days. If no correction is made, it means that we weren't able to find any error/mistake.

## Wondering where you can buy the yarn for this pattern?

Try a DROPS Super Store!

- LindeHobby
- Wool Warehouse Direct Ltd
- Ritohobby
- Purple Sheep Yarns

**DROPS**  
**SOCK-A-LICIOUS**

30%  
discount

DROPS NORD MIX  
Everyday comfort in alpaca and wool

DROPS DELIGHT PRINT  
Superwash treated sock wool

DROPS Fabel Print  
Superwash treated sock wool

March 1st to 31st ✦ [garnstudio.com/sale](https://www.garnstudio.com/sale)



**DROPS DESIGN.**  
[www.garnstudio.com](https://www.garnstudio.com)

© 1982-2020 DROPS Design A/S. We reserve all rights. This document, including all its sub-sections, has copyrights. Read more about what you can do with our patterns at the bottom of each pattern on our site.