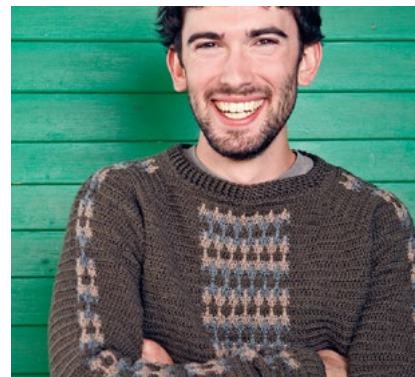

Free Crochet Patterns for Men

Hat, Beanie, Scarf, Sweater
and Mitts to Crochet

crochetme
linking the crochet community



Free Crochet Patterns for Men

Hat, Beanie, Scarf, Sweater and Mitts to Crochet

I AM ALWAYS LOOKING FOR THE PERFECT MEN'S CROCHET PATTERN. Menswear and crochet can be a tricky mix. It's hard to find projects he will love to wear and you will love to make. Whether it is a hat, mitts, scarf, or even a sweater, it needs to be comfortable, useful, and not fussy.

In this free eBook, we have gathered five projects that are perfect for men. The men's mitts will leave his fingers free, something I remember my dad always looking for, and the hats have just the right amount of colorwork to make it interesting. And the men's pullover, worked in light-weight yarn, is incredibly comfortable.

The **River Crossing Mitts** by Theresa Thomas are the ideal men's cabled fingerless gloves. Textured post stitches are used to create crochet cables, the secret to these heavy-duty mitts. Worked flat, they are then seamed up the side with an opening left for the thumb. Cabled strips are worked separately for an extra accent.

The **Bearsden Plaid Scarf** by Robyn Chachula is a great men's scarf. The colorwork plaid is fun to work and is a great accent piece. This crochet plaid scarf looks classic enough for his taste and interesting enough for your hook to enjoy.

The **Waldo Sweater** by Peter Franzi is a beautiful men's crochet pullover. Worked in one piece from the neck down, this men's sweater features raglan sleeves and colorwork insets on the front, back, and sleeves. The lightweight, superwash wool-and-silk-blend yarn gives it warmth without heaviness, something any man will love.

Galen's Manly Hat by Anne Lecrivain is a beanie any man will love. A classic two-color design adds the right amount of design without being fussy and makes this a great stashbusting design.

The **Toujours Hat** by Kim Werker is the perfect crochet design for men, just have fun with the color. This warm hat is worked in half double crochet which also has the advantage of working up quickly. Worked from the top down, concentrated increases at the crown also create a fun textural element. And the simple colorwork band will draw the eye.

Crochet the perfect accessory or garment for yourself and the men in your life. Find a great men's pattern from *Free Crochet Patterns for Men: Hat, Beanie, Scarf, Sweater and Mitts to Crochet!* We would love to see your work; share your pictures in the Crochet Member Gallery.

Best wishes,

P.S. Are you looking for a men's crochet pattern for yourself or a special someone in their life. Send them the link to download their own copy of *Free Crochet Patterns for Men: Hat, Beanie, Scarf, Sweater and Mitts to Crochet.*

| | | |
|---|----------------------------|---------|
| 1 | River Crossing Mitts | page 3 |
| 2 | Bearsden Plaid Scarf | page 6 |
| 3 | Waldo Sweater | page 7 |
| 4 | Galen's Manly Hat | page 10 |
| 5 | Toujours Hat | page 12 |
| | Abbreviations and Glossary | page 13 |

crochetme

FREE CROCHET PATTERNS FOR MEN
HAT, BEANIE, SCARF, SWEATER
AND MITTS TO CROCHET

A CROCHET ME E-BOOK EDITED BY
Toni Rexroat

EDITORIAL STAFF
EDITOR CROCHET ME **Toni Rexroat**

CREATIVE SERVICES
PRODUCTION DESIGNER **Janice Tapia**
PHOTOGRAPHY **As noted**
ILLUSTRATION **Gayle Ford**

©F+W Media, Inc. All rights reserved. F+W Media grants permission for any or all pages in this issue to be copied for personal use.

RIVER CROSSING MITTS

● ● ● ○ THERESA THOMAS

STYLED AFTER A BOXING HAND WRAP, these mitts are masculine and tough—but the cashmere-blend yarn is pretty soft on the hands, which means he'll be wearing them a lot. Both gloves are stitched the same, except for reversed crossband placement, so they work up quickly. Your guy can be wearing these by the end of the weekend, and the machine-washable yarn means they'll wash up well after he's finished stacking the wood.

GETTING STARTED

FINISHED SIZE Men's S (M, L) to fit 6¼ (6¾, 7¼)" cuff circumference; 2¾ (3, 3)" cuff length; 8 (8½, 9)" hand circumference; 5 (5½, 6)" hand length.

YARN Debbie Bliss Cashmerino Aran (55% merino, 33% microfibre, 12% cashmere; 98 yd [90 m]/1¼ oz [50 g]; **(4)**): #9 silver gray, 4 balls. Yarn distributed by Knitting Fever.

HOOK Sizes F/5 (3.75 mm) and G/6 (4 mm). Adjust hook size if necessary to obtain correct gauge.

NOTIONS Removable stitch markers (m); straight pins; yarn needle.

GAUGE 26 sts and 14 rows = 4" in post st rib patt with smaller hook.



Notes

Each mitt is crocheted flat, in 1 piece. The side edges are sewn tog with a space left for the thumb.

Ch 2 at beg of row counts as dc, unless otherwise indicated.

Stitch Guide

Post st rib patt (multiple of 8 sts + 2): Used only to determine gauge.

Row 1: Sk 3 ch (counts as dc), dc in each ch to end, turn.

Row 2: Ch 2 (counts as dc throughout; see notes), *BPdc (see Glossary) around each of next 2 sts, FPdc (see Glossary) around each of next 2 sts; rep from * to last 3 sts, BPdc around each of next 2 sts, dc in top of tch, turn.

Row 3: Ch 2, *FPdc around each of next 2 sts, BPdc around each of next 2 sts; rep from * to last 3 sts, FPdc around each of next 2 sts, dc in top of tch, turn.

Rep Rows 2–3 for patt.

Mitts

Cuff: With smaller hook, ch 42 (46, 48).

Row 1: (WS) Sk 3 ch (counts as dc throughout; see Notes), dc in each ch to end, turn—40 (44, 46) dc.

Row 2: (RS) Ch 2, BPdc (see Glossary) around each of next 1 (2, 3) sts, [FPdc (see Glossary) around each of next 2 sts, BPdc around each of next 2 sts] 4 times, FPdc around each of next 4 (6, 6) sts, [BPdc around each of next 2 sts, FPdc around each of next 2 sts] 4 times, BPdc around each of next 1 (2, 3) sts, dc in top of tch, turn.

Row 3: Ch 2, FPdc around each of next 1 (2, 3) sts, [BPdc around each of next 2 sts, FPdc around each of next 2 sts] 4 times, BPdc around each of next 4 (6, 6) sts, [FPdc around each of next 2 sts, BPdc around each of next 2 sts] 4 times, FPdc around each of next 1 (2, 3) sts, dc in top of tch, turn.

Rows 4–9: Rep Rows 2–3 three times.

Sizes M (L) only:

Row 10: Rep Row 2.

All Sizes:

Hand:

Size S only: Switch to larger hook.

Row 1: (RS) Ch 2, *BPdc around each of next 17 sts*, FPdc around each of next 4 sts; rep from * to *, dc in top of tch, turn.

Row 2 (inc row): Ch 2, *FPdc around each of next 16 sts*, 2 FPdc around next st, BPdc around each of next 4 sts, 2 FPdc around next st; rep from * to *, dc in top of tch, turn—42 dc.

Row 3 (inc row): Ch 2, *BPdc around each of next 17 sts*, 2 BPdc around next st, FPdc around each of next 4 sts, 2 BPdc around next st; rep from * to *, dc in top of tch, turn—44 dc.

Row 4 (inc row): Ch 2, *FPdc around each of next 18 sts*, 2 FPdc around next st, BPdc around each of next 4 sts, 2 FPdc around next st; rep from * to *, dc in top of tch, turn—46 dc.

Row 5: Ch 2, *BPdc around each of next 20 sts*, FPdc around each of next 4 sts; rep from * to *, dc in top of tch, turn.

Row 6 (inc row): Ch 2, *FPdc around each of next 19 sts*, 2 FPdc around next st, BPdc around each of next 4 sts, 2 FPdc around next st; rep from * to *, dc in top of tch, turn—48 dc.

Row 7 (inc row): Ch 2, *BPdc around each of next 20 sts*, 2 BPdc around next st, FPdc around each of next 4 sts, 2 BPdc around next st; rep from * to *, dc in top of tch, turn—50 dc.

Row 8: Ch 2, *FPdc around each of next 22 sts*, BPdc around each of next 4 sts; rep from * to *, dc in top of tch, turn.

Row 9: Ch 2, *BPdc around each of next 22 sts*, FPdc around each of next 4 sts; rep from * to *, dc in top of tch, turn.

Rows 10–11: Rep Rows 8–9.

Row 12: Rep Row 8.

PHOTOS BY JOE COCA

Sizes M (L) only: Switch to larger hook.

Row 1: (WS) Ch 2 (counts as dc throughout), *FPdc around each of next 18 (19) sts*, BPdc around each of next 6 sts; rep from * to *, dc in top of tch, turn.

Row 2 (inc row): Ch 2, *BPdc around each of next 17 (18) sts*, 2 BPdc around next st, FPdc around each of next 6 sts, 2 BPdc around next st; rep from * to *, dc in top of tch, turn—46 (48) dc.

Row 3 (inc row): Ch 2, *FPdc around each of next 18 (19) sts*, 2 FPdc around next st, BPdc around each of next 6 sts, 2 FPdc around next st; rep from * to *, dc in top of tch, turn—48 (50) dc.

Row 4 (inc row): Ch 2, *BPdc around each of next 19 (20) sts*, 2 BPdc around next st, FPdc around each of next 6 sts, 2 BPdc around next st; rep from * to *, dc in top of tch, turn—50 (52) dc.

Row 5: Ch 2, *FPdc around each of next 21 (22) sts*, BPdc around each of next 6 sts; rep from * to *, dc in top of tch, turn.

Row 6 (inc row): Ch 2, *BPdc around each of next 20 (21) sts*, 2 BPdc around next st, FPdc around each of next 6 sts, 2 BPdc around next st; rep from * to *, dc in top of tch, turn—52 (54) dc.

Row 7 (inc row): Ch 2, *FPdc around each of next 21 (22) sts*, 2 FPdc around next st, BPdc around each of next 6 sts, 2 FPdc around next st; rep from * to *, dc in top of tch, turn—54 (56) dc.

Row 8: Ch 2, *BPdc around each of next 23 (24) sts*, FPdc around each of next 6 sts; rep from * to *, dc in top of tch, turn.

Row 9: Ch 2, *FPdc around each of next 23 (24) sts*, BPdc around each of next 6 sts; rep from * to *, dc in top of tch, turn.

Rows 10–11: Rep Rows 8–9.

Row 12: Rep Row 8.

All Sizes:

Shape Top:

Size S only:

Row 13 (dec row): Ch 2, *BPdc around each of next 20 sts*, BPdc2tog (see Glossary), FPdc around each of next 4 sts, BPdc2tog; rep from * to *, dc in top of tch, turn—48 dc.

Row 14: Ch 2, *FPdc around each of next 21 sts*, BPdc around each of next 4 sts; rep from * to *, dc in top of tch, turn.

Row 15 (dec row): Ch 2, *BPdc around each of next 19 sts*, BPdc2tog, FPdc around each of next 4 sts, BPdc2tog; rep from * to *, dc in top of tch, turn—46 dc.

Row 16: Ch 2, *FPdc around each of

next 20 sts*, BPdc around each of next 4 sts; rep from * to *, dc in top of tch, place marker (pm) for crossband placement, turn.

Row 17 (Note): This row will reverse patt. Ch 2, FPdc around each of next 46 sts, dc in top of tch, turn.

Row 18 (dec row): Ch 2, *BPdc around each of next 18 sts*, BPdc2tog, BPdc around each of next 4 sts, BPdc2tog; rep from * to *, dc in top of tch, turn—44 dc.

Row 19: Ch 2, FPdc around each of next 42 sts, dc in top of tch, turn.

Row 20 (dec row): **Note:** change to hdc and reverse patt. Ch 2 (counts as hdc throughout), *FPhdc (see Glossary) around each of next 17 sts*, FPhdc2tog (see Glossary), BPhdc (see Glossary) around each of next 4 sts, FPhdc2tog; rep from * to *, hdc in top of tch, turn—42 hdc. Fasten off leaving a long tail for sewing.

Size M only:

Row 13 (dec row): Ch 2, *FPdc around each of next 21 sts*, FPdc2tog (see Glossary), BPdc around each of next 6 sts, FPdc2tog; rep from * to *, dc in top of tch, turn—52 dc.

Row 14: Ch 2, *BPdc around each of next 22 sts*, FPdc around each of next 6 sts;

rep from * to *, dc in top of tch, turn.

Row 15 (dec row): Ch 2, *FPdc around each of next 20 sts*, FPdc2tog, BPdc around each of next 6 sts, FPdc2tog; rep from * to *, dc in top of tch, turn—50 dc.

Row 16: Ch 2, *BPdc around each of next 21 sts*, FPdc around each of next 6 sts; rep from * to *, dc in top of tch, turn.

Row 17: Ch 2, *FPdc around each of next 21 sts*, BPdc around each of next 6 sts; rep from * to *, dc in top of tch, pm for crossband placement, turn.

Row 18 (Note): This row will reverse patt. Ch 2, FPdc around each of next 48 sts, dc in top of tch, turn.

Row 19 (dec row): Ch 2, *BPdc around each of next 19 sts*, BPdc2tog (see Glossary), BPdc around each of next 6 sts, BPdc2tog; rep from * to *, dc in top of tch, turn—48 dc.

Row 20: Ch 2, *FPdc around each of next 46 sts, dc in top of tch, turn.

Row 21 (dec row): **Note:** Change to hdc and reverse patt. Ch 2 (counts as hdc), *FPhdc around each of next 18 sts*, FPhdc2tog (see Glossary), BPhdc (see Glossary) around each of next 6 sts, FPhdc2tog; rep from * to *, hdc in top of tch, turn—46 dc. Fasten off leaving a long tail for sewing.





Size L only:

Row 13 (dec row): Ch 2, *FPdc around each of next 22 sts*, FPdc2tog, BPdc around each of next 6 sts, FPdc2tog; rep from * to *, dc in top of tch, turn—54 dc.

Row 14: Ch 2, *BPdc around each of next 23 sts*, FPdc around each of next 6 sts; rep from * to *, dc in top of tch, turn.

Row 15 (dec row): Ch 2, *FPdc around each of next 21 sts*, FPdc2tog, BPdc around each of next 6 sts, FPdc2tog; rep from * to *, dc in top of tch, turn—52 dc.

Row 16: Ch 2, *BPdc around each of next 22 sts*, FPdc around each of next 6 sts; rep from * to *, dc in top of tch, turn.

Row 17: Ch 2, *FPdc around each of next 22 sts*, BPdc around each of next 6 sts; rep from * to *, dc in top of tch, turn.

Rows 18–19: Rep Rows 16–17. Pm for crossband placement.

Row 20: Note: This row will reverse patt. Ch 2, FPdc around each of next 50 sts, dc in top of tch, turn.

Row 21 (dec row): Ch 2, *BPdc around each of next 20 sts*, BPdc2tog, BPdc around each of next 6 sts, BPdc2tog; rep from * to *, dc in top of tch, turn—50 dc.

Row 22: Ch 2, FPdc around each of next 48 sts, dc in top of tch, turn.

Row 23 (dec row): Note: Change to hdc and reverse patt. Ch 2 (counts as hdc), *FPhdc around each of next 19 sts*, FPhdc2tog, BPhdc around each of next 6 sts, FPhdc2tog; rep from * to *, hdc in top of tch, turn—48 hdc. Fasten off leaving a long tail for sewing.

Crossband Embellishments

Long Band (make 2):

Row 1: Using larger hook and leaving a long tail for sewing, ch 6, sk 1 ch, sl st in next 2 ch, dc in next 3 ch—5 sts.

Row 2: Ch 2, FPdc around each of next 2 sts, dc in next 2 sts, turn—5 dc.

Row 3: Ch 2, BPdc around each of next 3 sts, dc in top of tch, turn.

Row 4: Ch 2, FPdc around each of next 3 sts, dc in top of tch, turn.

Rep Rows 3–4 five (six, seven) times.

Last row: Sl st in next 2 sts, BPdc around each of next 2 sts, dc in top of tch. Fasten off leaving a long tail for sewing.

Short Band (make 2)

Row 1: Leaving a long tail for sewing, ch 6, sk next ch, sl st in next 2 ch, dc in next 3 ch—5 sts.

Row 2: Ch 2, FPdc around each of next 2 sts, dc in next 2 sts, turn—5 dc.

Row 3: Ch 2, BPdc around each of next 3 sts, dc in top of tch, turn.

Row 4: Ch 2, FPdc around each of next 3 sts, dc in top of tch, turn.

Rep Rows 3–4 two (three, four) times.

Last row: Sl st in next 2 sts, BPdc around each of next 2 sts, dc in top of tch. Fasten off leaving a long tail for sewing.

Finishing

Positioning crossbands:

The bands have angled ends creating sloping sides. The instructions that follow will explain where to place the tops of each band. Each mitt will have one short band and one long band; short bands should be placed first. It is best to pin the bands in place before beg to sew in order to make adjustments if necessary. Fold the mitts in half along the 4 (6, 6) post sts in the middle of the rows of the mitt and place the folded mitts on a flat surface, side by side, with unseamed edges facing each other. The folded edge of each mitt is the outside edge. Place the angled edge of each short band on the ridge created when you first reversed patt (locate m) in the top outside corner of each mitt (upper left for left mitt and upper right for right mitt). This will allow the natural roll of the top edge of the mitt to hide the edge of the short band. Place the angled edge of each long band on the same ridge in the opposite corner. Place it over the short band to completely cover the end of the short band and bring the bottom corner of the long band to the corner where the cuff and the post sts at the side edge of the mitt meet. The criss-cross should make a leaning Y shape.

Carefully sew to mitt, as invisible as possible, being sure to sew all edges. Fold mitts inside out and whipstitch (see Glossary) cuff side seams from bottom edge up. Whipstitch mitt side seams from very top edge (making sure top edge is not rolled over) to within 2" of cuff (leaving space for thumb). Weave in all ends. Turn mitts RS out. ❖

TERESA THOMAS, a knit and crochet designer, lives in Hilton Head Island, South Carolina. She sells her designs through her company *Avoir Chaud* (French for “be warm”) Hand Knits.



Bearsden Plaid Scarf

Robyn Chachula



Getting Started

FINISHED SIZE About 8½" wide and 60" long.

YARN Brooklyn Tweed Shelter (100% Targhee-Columbia wool; 140 yd [128 m]/1¼ oz [50 g]; **(4)**): #16 nest (MC), 2 hanks; #1 long johns (CC1) and #4 hayloft

(CC2), 1 hank each.

HOOK Size I/9 (5.5 mm). Adjust hook size if necessary to obtain correct gauge.

NOTIONS Yarn needle.

GAUGE 14 sts and 12 rows = 4" square in esc.

Notes

Scarf is crocheted in stripes, then vertical lines are ch st embroidered.

Pattern

SCARF

With MC, ch 31.

Row 1: (RS) Esc (see Glossary) in 3rd ch from hook (skipped ch count as esc), esc in next ch, ch 1, sk 1 ch, esc in next 4 ch, ch 1, sk 1 ch, esc in next sc, ch 1, sk 1 ch, esc in next 8 ch, ch 1, sk 1 ch, esc in next 4 ch, ch 1, sk 1 ch, esc in next ch, ch 1, sk 1 ch, esc in last 3 ch, turn—30 sts.

Row 2: Ch 2 (counts as esc throughout), esc

in each esc and ch 1 over each ch-sp across, join CC1 in last st, fasten off MC, turn.

Row 3: Ch 1, sc in each esc across, ch 1 over each ch-sp across, join CC2 in last st, fasten off CC1, turn.

Row 4: Ch 2, esc in each sc and ch 1 over each ch-sp across, turn.

Row 5: Rep Row 2, join CC1 in last st, fasten off CC2, turn.

Row 6: Rep Row 3, join MC in last st, fasten off, CC1, turn.

Row 7: Rep Row 4.

Rows 8–14: With MC, rep Row 2, join CC1, fasten off MC.

Rows 15–188: Rep Rows 3–14 fourteen times; rep Rows 3–8. Fasten off.

FINISHING

Embroidery:

With RS facing, hold yarn from WS, working vertically, using chart as guide, join CC1 to first ch-sp of Row 1, *sl st through ch-sp in next row; rep from * to last row, fasten off. Rep with CC2 on next ch-sp column, CC1 on next 2 ch-sp columns, CC2 on next ch-sp column, and CC1 on last ch-sp column.

Edging:

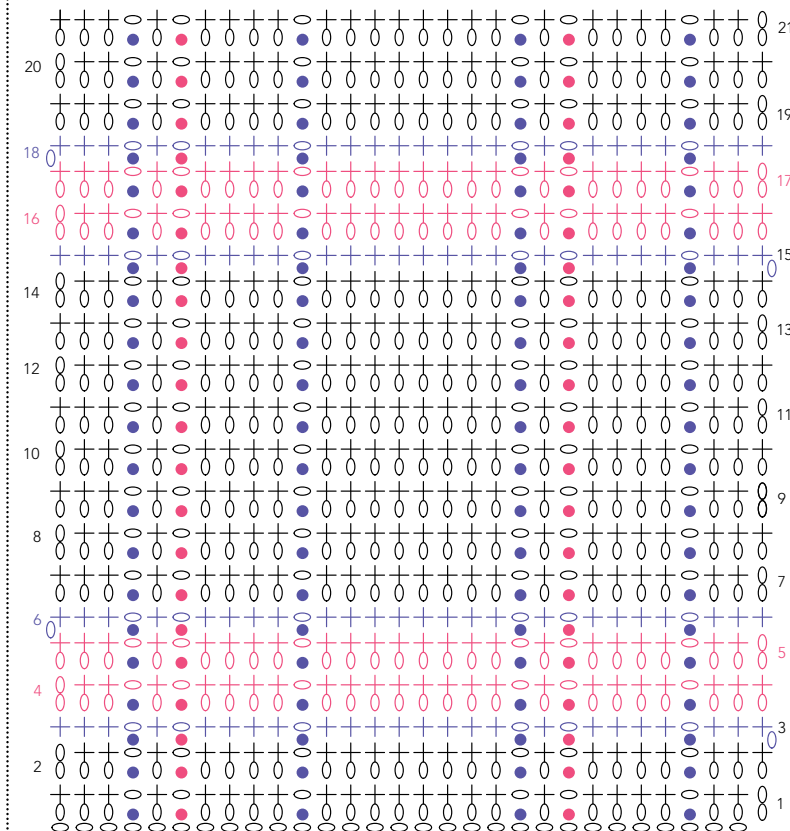
Join MC to foundation ch, sc in each st and row end around working 3 sc in each corner, sl st in first sc to join. Fasten off.

Weave in ends. Block. 🌸

Key

- = chain
- = slip stitch
- ⊕ = single crochet
- ⊕ = extended sc

Bearsden Stitch Pattern



PHOTOS BY HARPER POINT PHOTOGRAPHY





Waldo Sweater

Peter Franzi



PLUS SIZE

Getting Started

FINISHED SIZE 35 (39, 43, 47, 51, 55)" chest circumference, 23 (25, 27, 29, 30, 31)" long. Garment shown measures 43" modeled with 1" ease.

YARN Spud & Chloë Fine (80% superwash wool, 20% silk; 248 yd [227 m]/2¼ oz [63 g]; **(1)**): #7803 dachshund (A), 7 (8, 8, 8, 8, 9) skein; #7823 hippo (B), #7814 shitake (C); 1 skein each. Yarn distributed by Blue Sky Alpacas.

HOOK Size E/4 (3.5 mm). Adjust hook size if necessary to obtain correct gauge.

NOTIONS Color work bobbins; st markers (m).

GAUGE 20 sts and 16 rows = 4" in main st patt.

Notes

Pullover is worked from top down in one piece, beg at neck then in joined, turned rnds. The use of bobbins for CCs is highly recommended.

When changing colors, work last lp of last st in old color, then complete st with new color.

Colors are changed every 2 rows; bobbins wait for consecutive rows, but yarn is cut when not used in a consecutive row, leaving an end long enough to weave in.

Stitch Guide

Beginning foundation hdc corner (Beg fhdc corner): Ch 2, yo, insert hook into 2nd ch from hook, yo and pull up lp, yo, draw through 3 lps, yo, insert hook in same ch, yo, pull up lp, yo, draw through 3 lps, yo, insert hook in same ch, yo, pull up lp, yo, draw through 1 lp on hook (ch-1 made), yo, draw through 3 lps—3 hdc in 1 ch.

Foundation hdc corner (Fhdc corner): Yo, insert hook in front lp and bottom ridge lp of ch-1 made in previous st, yo, pull up lp,

yo, draw through 3 lps, yo, insert hook in same ch-1, yo, pull up lp, yo, draw through 3 lps, yo, insert hook in same ch-1, yo, pull up lp, yo, draw through 1 lp on hook (ch 1 made), yo, draw through 3 lps—3 hdc in 1 ch.

Extended long dc (Eldc): Yo, insert hook in indicated st or sp 2 rows below, yo, pull up lp, yo, draw through 1 lp, [yo, draw through 2 lps] 2 times.

Pattern

PULLOVER

Yoke:

Rnd 1: With A, beg fhdc corner (see Stitch Guide), fhdc (see Glossary) 41 (41, 41, 43, 45, 47), fhdc corner (see Stitch Guide), fhdc 11, fhdc corner, fhdc 41 (41, 41, 43, 45, 47), fhdc corner, fhdc 11, sl st in first fhdc to join, turn—116 (116, 116, 120, 124, 128) sts.

Rnd 2: (RS) Ch 2, dc in next 12 sts, *3 dc in next st, dc in next 43 (43, 43, 45, 47, 49) sts, 3 dc in next st*, dc in next 13 sts; rep from * to *, sl st in 2nd ch of tch to join, turn—124 (124, 124, 128, 132, 136) sts. Place marker (pm) to indicate RS.

Rnd 3: Ch 1, hdc in same st as join, hdc in next st, *3 hdc in next st, hdc in next 45 (45, 45, 47, 49, 51) sts, 3 hdc in next st*, hdc in next 15 sts; rep from * to *, hdc in next 13 sts, sl st in first hdc to join, turn—132 (132, 132, 136, 140, 144) sts.

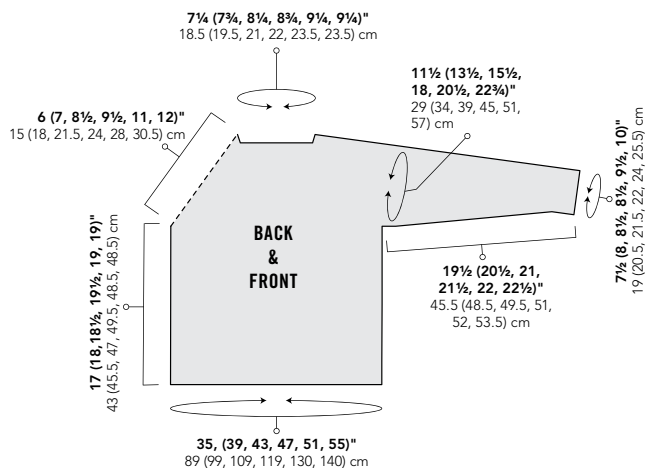
Rnd 4: Ch 2, *[dc in next 3 sts, ch 1, sk next st] 2 times, dc in next 6 sts, 3 dc in next st, dc in next 11 (11, 11, 12, 13, 14) sts, ch 1, sk next st, [dc in next 3 sts, ch 1, sk next st] 6 times, dc in next 11 (11, 11, 12, 13, 14) sts, 3 dc in next st*, dc in next 3 sts; rep from * to *, dc in next 2 sts, sl st in 2nd ch of tch to join, turn—140 (140, 140, 144, 148, 152) sts.

Rnd 5: Ch 1, hdc in same st as join, hdc in next 3 sts, *3 hdc in next st, hdc in next 11 (11, 11, 10, 11, 10) sts, change to B, sc in next st, eldc (see Stitch Guide) in next st, sc in next st, [ch 1, sk next st, sc in next st, eldc in next st, sc in next st] 6 (6, 6, 7, 7, 8) times, with A,

hdc in next 11 (11, 11, 10, 11, 10) sts, 3 hdc in next st, hdc in next 6 sts, with B, sc in next st, eldc in next st, sc in next st, ch 1, sk next st, sc in next st, eldc in next st, sc in next st*, with A, hdc in next 6 sts; rep from * to *, with A, hdc in next 2 sts, sl st in first hdc to join, turn—148 (148, 148, 152, 156, 160) sts.

Rnd 6: Ch 2, dc in next 2 sts, *with B, dc in next 3 sts, ch 1, sk next st, dc in next 3 sts, with A, dc in next 7 sts, 3 dc in next st, dc in next 12 (12, 12, 11, 12, 11) sts, with B, dc in next 3 sts, [ch 1, sk next st, dc in next 3 sts] 6 (6, 6, 7, 7, 8) times, with A, dc in next 12 (12, 12, 11, 12, 11) sts, 3 dc in next st, *dc in next 7 sts; rep from * to *, dc in next 4 sts, sl st in 2nd ch of tch to join, turn—156 (156, 156, 160, 164, 168) sts.

Rnd 7: Ch 1, hdc in same st as join, hdc in next 5 sts, *3 hdc in next st, hdc in next 13 (13, 13, 12, 13, 12) sts, change to C, sc in next st, ch 1, sk next st, sc in next st, [eldc in next st, sc in next st, ch 1, sk next st, sc in next st] 6 (6, 6, 7, 7, 8) times, with A, hdc in next 13 (13, 13, 12, 13, 12) sts, 3 hdc in next st, hdc in next 8 sts, with C, sc in next st, ch 1, sk next st, sc in next st, eldc in next st, sc in next st, ch 1, sk next st, sc in next st, * with A, hdc in next 8 sts; rep from * to *, with A, hdc in next



2 sts, sl st in first hdc to join, turn—164 (164, 164, 168, 172, 176) sts.

Rnd 8: Ch 2, dc in next 2 sts, *with C, dc in next st, ch 1, sk next st, dc in next 3 sts, ch 1, sk next st, dc in next st, with A, dc in next 9 sts, 3 dc in next st, dc in next 14 (14, 14, 13, 14, 13) sts, with C, dc in next st, ch 1, sk next st, [dc in next 3 sts, ch 1, sk next st] 6 (6, 6, 7, 7, 8) times, dc in next st, with A, dc in next 14 (14, 14, 13, 14, 13) sts, 3 dc in next st, * dc in next 9 sts; rep from * to *, dc in next 6 sts, sl st in 2nd ch of tch to join, turn—172, (172, 172, 176, 180, 184) sts.

Rnd 9: Ch 1, hdc in same st as join, hdc in next 7 sts, *3 hdc in next st, hdc in next 15 (15, 15, 14, 15, 14) sts, sc in next st, eldc in next st, sc in next st, [ch 1, sk next st, sc in next st, eldc in next st, sc in next st] 6 (6, 6, 7, 7, 8) times, hdc in next 15 (15, 15, 14, 15, 14) sts, 3 hdc in next st, hdc in next 10 sts, sc in next st, eldc in next st, sc in next st, ch 1, sk next st, sc in next st, eldc in next st, sc in next st, * hdc in next 10 sts; rep from * to *, hdc in next 2 sts, sl st in first hdc to join, turn—180 (180, 180, 184, 188, 192) sts.

Rnd 10: Ch 2, dc in next 5 sts, *ch 1, sk next st, dc in next 14 sts, 3 dc in next st, dc in next 19 (19, 19, 18, 19, 18) sts, ch 1, sk next st, [dc in next 3 sts, ch 1, sk next st] 5 (5, 5, 6, 6, 7) times, dc in next 19 (19, 19, 18, 19, 18) sts, 3 dc in next st, * dc in next 14 sts; rep from * to *, dc in next 8 sts, sl st in 2nd ch of tch to join, turn—188 (188, 188, 192, 196, 200) sts.

Rnd 11: Ch 1, hdc in same st as join, hdc in next 9 sts, *3 hdc in next st, hdc in next 17 (17, 17, 16, 17, 16) sts, with C, sc in next st, ch 1, sk next st, sc in next st, [eldc in next st, sc in next st, ch 1, sk next st, sc in next st] 6

(6, 6, 7, 7, 8) times, with A, hdc in next 17 (17, 17, 16, 17, 16) sts, 3 hdc in next st, hdc in next 12 sts, with C, sc in next st, ch 1, sk next st, sc in next st, eldc in next st, sc in next st, ch 1, sk next st, sc in next st, * with A, hdc in next 12 sts; rep from * to *, with A, hdc in next 2 sts, sl st in first hdc to join, turn—196 (196, 197, 200, 204, 208) sts.

Rnd 12: Ch 2, dc in next 2 sts, *with B, dc in next st, ch 1, sk next st, dc in next 3 sts, ch 1, sk next st, dc in next st, with A, dc in next 13 sts, 3 dc in next st, dc in next 18 (18, 18, 17, 18, 17) sts, with B, dc in next st, ch 1, sk next st, [dc in next 3 sts, ch 1, sk next st] 6 (6, 6, 7, 7, 8) times, dc in next st, with A, dc in next 18 (18, 18, 17, 18, 17) sts, 3 dc in next st, * dc in next 13 sts; rep from * to *, dc in next 10 sts, sl st in 2nd ch of tch to join, turn—204 (204, 204, 208, 212, 216) sts.

Rnd 13: Ch 1, hdc in same st as join, hdc in next 11 sts, *3 hdc in next st, hdc in next 19 (19, 19, 18, 19, 18) sts, with B, sc in next st, eldc in next st, sc in next st, [ch 1, sk next st, sc in next st, eldc in next st, sc in next st] 6 (6, 6, 7, 7, 8) times, with A, hdc in next 19 (19, 19, 18, 19, 18) sts, 3 hdc in next st, hdc in next 14 sts, with B, sc in next st, eldc in next st, sc in next st, ch 1, sk next st, sc in next st, eldc in next st, sc in next st, * with B, hdc in next 14 sts; rep from * to *, with A, hdc in next 2 sts, sl st in first hdc to join, turn—212 (212, 212, 216, 220, 224) sts.

Rnd 14: Ch 2, dc in next 2 sts, *with B, dc in next 3 sts, ch 1, sk next st, dc in next 3 sts, with A, dc in next 15 sts, 3 dc in next st, dc in next 20 (20, 20, 19, 20, 19) sts, with B, dc in next 3 sts, [ch 1, sk next st, dc in next 3 sts] 6 (6, 6, 7, 7, 8) times, with A, dc in next 20 (20, 20, 19, 20, 19) sts, 3 dc in next st, * dc in next 15 sts; rep from * to *, dc in next 12 sts, sl st in 2nd ch of tch to join, turn—220 (220, 220, 224, 228, 232) sts.

Rnd 15: Ch 1, hdc in same st as join, hdc in next 13 sts, *3 hdc in next st, hdc in next 21 (21, 21, 20, 21, 20) sts, sc in next st, ch 1, sk next st, sc in next st, [eldc in next st, sc in next st, ch 1, sk next st, sc in next st] 6 (6, 6, 7, 7, 8) times, hdc in next 21 (21, 21, 20, 21, 20) sts, 3 hdc in next st, hdc in next 16 sts, sc in next st, ch 1, sk next st, sc in next st, eldc in next st, sc in next st, ch 1, sk next st, sc in next st, * hdc in next 16 sts; rep from * to *, hdc in next 2 sts, sl st in first hdc to join, turn—228 (228, 228, 232, 236, 240) sts.

Rnd 16: Ch 2, dc in next 3 sts, *ch 1, sk next st, dc in next 3 sts, ch 1, sk next st, dc in next 18 sts, 3 dc in next st, dc in next 23 (23, 23, 22, 23, 22) sts, [ch 1, sk next st, dc in next 3 sts] 6 (6, 6, 7, 7, 8) times, ch 1, sk next st, dc in next 23 (23, 23, 22, 23, 22) sts, 3 dc in next st, * dc in next 18 sts; rep from * to *, dc in next 14 sts, join with sl st to 2nd ch of tch to join, turn—236 (236, 236, 240, 244, 248) sts. Cont st patt and color change sequence as est in Rows 5–16, inc 2 sts each corner, ending on Rnd 23 (28, 33, 38, 43, 48)—292 (332, 372, 416, 460, 504) sts. Fasten off.

Sizes 35 (43, 51)" only:

Work one RS rnd in patt without inc in corners.

Body:

Pm in center dc of each 3-dc corner. Fold yoke in half WS tog, aligning pairs of corner m. On one side of yoke, with neck opening facing away, and working through both layers, insert hook through front marked st, then back marked st, sl st with A to join, ch 2, 2 hdc in next st. Work in est patt across 88 (98, 108, 118, 128, 138) sts of front body to next marked st, working through both layers, yo, insert hook through front marked st, then back marked st, yo, pull up lp, complete hdc, leaving sleeve sts unworked, 2 hdc in next st, cont in patt across 88 (98, 108, 118, 128, 138) sts of back, leaving other sleeve sts unworked, sl st in top of beg ch-2 to join, turn—182 (202, 222, 242, 262, 282) sts. Leave 1 m in each joined corner.

Work in patt until length from neckline is 21 (23, 25, 27, 28, 29)", ending with a WS row, turn.

Bottom ribbing:

Rnd 1: With A, ch 2, dc around, sl st in 2nd ch of tch. Do not turn here and foll rnds.

Rnd 2: Ch 1, FPdc (see Glossary) around tch, BPdc (see Glossary) around next st, [FPdc around next st, BPdc around next st] around, sl st in first FPdc to join.

Rnd 3: Ch 1, [FPdc around next st, BPdc around next st] around, sl st in first FPdc to join.

Rnds 4–8: Rep Rnd 3 five times. Fasten off.

Neck ribbing:

Rnd 1: With RS facing, join A with sl st in any ch of fhdc, ch 2, dc around, sl st in 2nd ch of tch to join. Do not turn here and foll rnds.

Rnd 2: Ch 1, FPdc around tch, BPdc around next st, [FPdc around next st, BPdc around next st] around, sl st in first FPdc to join.

Rnd 3: Ch 1, [FPdc around next st, BPdc around next st] around, sl st in first FPdc to join.

Rnd 4: Rep Rnd 3. Fasten off.

Sleeve:

Rnd 1: (RS) Join A with sl st in one marked corner st working through both layers as for body, ch 2, dc in same st, work in patt around 56 (66, 76, 88, 100, 112) unworked yoke sts, sl st in 2nd ch of tch to join, turn—58 (68, 78, 90, 102, 114) sts.

Rnd 2: Ch 1, hdc in next st, hdc2tog (see Glossary), work in patt to last 3 sts, hdc2tog, hdc in next st, sl st in first hdc to join, turn—56 (66, 76, 88, 100, 112) sts.

Size 35" only:

Rnds 3–8: Work in patt.

Rnd 9: Ch 2, dc in next st, dc2tog (see Glossary), work in patt to last 3 sts, tr2tog (see Glossary), tr in last st, sl st in 2nd ch of tch to join, turn—54 sts.

Rnds 10–15: Work in patt.

Rnd 16: Rep Rnd 2—52 sts.

Rnds 17–58: Rep Rnds 3–16 three times—40 sts.

Rnds 59–65: Rep Rnds 3–9—38 sts.



Rnds 66–70: Work in patt.

Size 39" only:

Rnds 3–6: Work in patt.

Rnd 7: Ch 2, dc in next st, dc2tog (see Glossary), work in patt to last 3 sts, tr2tog (see Glossary), tr in last st, sl st in 2nd ch of tch to join, turn—64 sts.

Rnds 8–11: Work in patt

Rnd 12: Rep Rnd 2—62 sts.

Rnds 13–72: Rep Rnds 3–12 six times—40 sts.

Rnds 73–76: Work in patt.

Size 43" only:

Rnds 3–5: Work in patt.

Rnd 6: Rep Rnd 2—74 sts.

Rnds 7–70: Rep Rnds 3–6—42 sts.

Rnds 71–72: Work in patt.

Sizes 47 (51)" only:

Rnds 3–4: Work in patt.

Rnd 5: Ch 2, dc in next st, dc2tog (see Glossary), work in patt to last 3 sts, tr2tog (see Glossary), tr in last st, sl st in 2nd ch of tch to join, turn—86 (98) sts.

Rnds 6–7: Work in patt.

Rnd 8: Rep Rnd 2—84 (96) sts.

Rnds 9–69 (81): Rep Rnds 3–8 ten (twelve) times—46 (48) sts.

Size 47" only:

Rnds 70–71: Work in patt.

Rnd 72: Rep Rnd 2—44 sts.

Rnds 73–80: Work in patt.

Size 51" only:

Rnd 82: Work in patt.

Size 55" only:

Rnds 3–4: Work in patt.

Rnd 5: Ch 2, dc in next st, dc2tog (see Glossary), work in patt to last 3 sts, tr2tog (see Glossary), tr in last st, sl st in 2nd ch of tch to join, turn—110 sts.

Rnd 6: Work in patt.

Rnd 7: Rep Rnd 5—108 sts.

Rnds 8–9: Work in patt.

Rnds 10–79: Rep Rnds 5–9—52 sts.

Rnd 80: Rep Rnd 5—50 sts.

Rnds 81–84: Work in patt.

All sizes:

Cuff ribbing:

Rnd 1: Ch 2, dc around, sl st in 2nd ch of tch—38 (40, 42, 44, 48, 50) sts. Do not turn here and foll rnds.

Rnd 2: Ch 1, FPdc around tch, BPdc around next st, [FPdc around next st, BPdc around next st] around, sl st in first FPdc to join.

Rnd 3: Ch 1, [FPdc around next FPdc, BPdc around next BPdc] around, sl st in first FPdc to join.

Rnds 4–6: Rep Rnd 3 three times. Fasten off.

FINISHING

Weave in ends. Block to measurements. ❁





PHOTOS BY JOE COCA

Galen's Manly Hat

design by Anne Lecrivain

Originally published in *Interweave Crochet Accessories* 2010

Finished Size 20 (22, 24)" head circumference.

Yarn The Fibre Company Canopy Worsted (50% baby alpaca, 30% merino, 20% bamboo; 100 yd [91 m]/13¼ oz [50 g]; **4**): obsidian (A), 1 (2, 2) hanks; laguna (B), 1 hank. Yarn distributed by Kelbourne Woolens.

Hook Size G/6 (4 mm). Adjust hook size if necessary to obtain correct gauge.

Notions Locking st marker (m); yarn needle.

Gauge 16 sts and 16 rows = 4" in st patt.

Notes

When changing colors, the unused color may be floated up the side of your work. Take care not to let your floats be too loose or too tight. To change colors, pull up the final lp of the last st with the new color.

Hat

With A, ch 79 (87, 95), sl st in beg ch to form ring, being careful not to twist sts, place marker (pm) in last ch made. Notes: Do not join subsequent rnds. Beg

working in spiral, moving m up to mark beg of rnd. Do not turn at end of rnd.

Rnd 1: Ch 1, sc in first ch, *dc in next ch, sc in next ch; rep from * around, pm—79 (87, 95) sts.

Rnd 2: With B, *dc in next sc, sc in next dc; rep from * around, ending with dc in last st.

Rnd 3: With A, *sc in next dc, dc in next sc; rep from * around, ending with sc in last st.

Rnd 4: Rep Rnd 2.

Rnds 5–20: Rep Rnds 3–4 eight times.

Crown:

Rnd 1: With A, *sc in next 6 sts, sc2tog (see w); rep from * to last 7 sts, sc in last 7 sts—70 (77, 84) sc.

Rnd 2 and all even rnds: Sc around.

Rnd 3: *Sc in next 5 sts, sc2tog; rep from * around—60 (66, 72) sc.

Rnd 5: *Sc in next 4 sts, sc2tog; rep from * around—50 (55, 60) sc.

Rnd 7: *Sc in next 3 sts, sc2tog; rep from * around—40 (44, 48) sc.

Rnd 9: *Sc in next 2 sts, sc2tog; rep from * around—30 (33, 36) sc.

Rnd 11: *Sc in next st, sc2tog; rep from * around—20 (22, 24) sc.

Rnd 13: Sc2tog around—10 (11, 12) sc.

Fasten off, leaving a 12" tail. Weave tail through top of rem 10 (11, 12) sts, pull tail to close top. Weave in ends. •

ANNE LECRIVAIN, *addicted to all things fiber, loves to crochet and knit and dreams of encouraging more knitters to pick up a hook. Working and teaching at Anacapa Fine Yarns in Ventura, California, keeps her in contact with fellow fiber-lovers and possible recruits.*

Changing Colors

Both of the techniques described below apply to changing to a new color of yarn or to new yarn if the current ball has run out. To seamlessly change yarn in the middle of a row or round:

Step 1: With the working yarn, make the next stitch until only one step remains to complete it (e.g., for double crochet: yo, insert hook in next st and pull up lp, yo and draw through 2 lps on hook; for sc2tog: [insert hook in next st and pull up lp] 2 times).

Step 2: Drop the working yarn and let it fall to the back of your work, yarn over with the new yarn and draw through the remaining loops on your hook to complete the stitch (Figure 1).

Step 3: Continue with the new yarn (Figure 2).

To change yarn at the end of a row, follow Steps 1–3 for the last stitch of the row. Make your turning chain with the new yarn.

To change yarn at the end of a round when you are joining each round with a slip stitch in the first stitch:

Complete the last stitch of the round with the working yarn.

Drop the working yarn and let it fall to the back of your work, insert your hook in the first stitch of the round. Yarn over with the new yarn and draw it through both the stitch and the loop on your hook to make a slip stitch.

Make your beginning chain with the new yarn.

If you are doing stranded colorwork, do not cut the first yarn but keep it handy for the next time you need it. If you are done using the first yarn, be sure to leave a tail long enough to weave in.

▶ For a video tutorial on [changing colors](#), visit [crochetme.com](#).

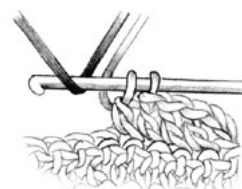


FIGURE 1

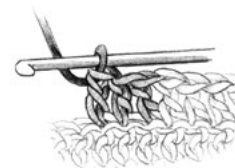


FIGURE 2




TOUJOURS HAT

● ○ ○ ○ KIM WERKER

CONCENTRATED INCREASES CREATE TEXTURE AT THE TOP OF THIS SIMPLE HAT that's worked in extended half double crochet for interest and warmth. Crossed post stitches create the herringbone-like band at the brim and allow for any type of color play.

GETTING STARTED

FINISHED SIZE 23" head circumference.

YARN Red Heart Designer Sport (100% acrylic; 279 yd [255 m]/3 oz [85 g]; ): #3410 granite (A) and #3002 black (B), 1 skein each.

Yarn distributed by Coats & Clark.

HOOK H/8 (5.0 mm). Adjust hook size if necessary to obtain correct gauge.

GAUGE 16 sts and 10 rows = 4" in ehdc.

Notes

Beg ch does not count as st except in Rnd 16. Instructions indicate how to alter size for 22" circumference. When doing colorwork, do not crochet over unused yarn; strand unused yarn at back of work.

Stitch Guide

Extended half double crochet (ehdc): Yo, insert hook in next st and pull up lp, yo and draw through 1 lp on hook, yo and draw through all 3 lps on hook.

Ehdc dec (ehdc2tog): [Yo, insert hook in next st and pull up lp, yo and draw through 1 lp on hook] 2 times, yo and draw through all 5 lps on hook—1 st dec'd.

Hat

Loop tail end of yarn behind working yarn to form an adjustable ring, insert hook in ring, yo and pull up lp.

Rnd 1: Ch 2 (does not count as st unless otherwise indicated), work 8 ehdc (see Stitch Guide) in ring, sl st in first ehdc to join, pull yarn tail to tighten ring—8 sts.

Rnd 2: Ch 2, 3 ehdc in same st as join and in each st around, sl st in first ehdc to join—24 sts.

Rnd 3: Ch 2, ehdc in same st as join and in each st around, sl st in first ehdc to join.

Rnd 4: Ch 2, 2 ehdc in same st as join and in each st around, sl st in first ehdc to join—48 sts.

Rnd 5: Ch 2, 2 ehdc in same st as join and in each st around, sl st in first ehdc to join—96 sts.

Rnds 6–8: Rep Rnd 3.

Rnd 9: Ch 2, ehdc in same st as join and in each of next 21 sts, ehdc2tog (see Stitch Guide), [ehdc in next 22 sts, ehdc2tog] 3 times, sl st in first ehdc to join—4 sts dec'd.

Rnds 10–13: Rep Rnd 3.

Note: To make 22" hat, Rep Rnd 9 instead of Rnd 3 for Rnd 14.

Rnd 14: Rep Rnd 3.

Rnd 15: Rep Rnd 3.

Rnd 16: Ch 2 (counts as first ehdc), ehdc in next st, *with B, sk 1 st, FPdc (see Glossary) around next st, FPdc around skipped st; with A, ehdc in next 2 sts; rep from * around with B, end with sk 1 st, FPdc around last st, FPdc around skipped st, sl st in top of beg ch-2 to join.

Rnd 17: With B, ch 2 (does not count as st), sk tch from last rnd, FPdc around next st, FPdc around skipped tch, *with A, ehdc in next 2 sts; with B, sk 1 st, FPdc around next st, FPdc around skipped st; rep from * around, with A end with ehdc in last 2 sts, sl st in first FPdc to join. Fasten off B.

Rnd 18: With A, rep Rnd 3. Fasten off and weave in loose ends. ●

KIM WERKER is the former editor of *Interweave Crochet*, the founder of *CrochetMe.com*, and a co-host of *Knitting Daily TV*.



PHOTOS BY PAMELA BETHEL

Abbreviations

| | |
|------------|---|
| beg | begin(s); beginning |
| bet | between |
| blo | back loop only |
| CC | contrasting color |
| ch | chain |
| cm | centimeter(s) |
| cont | continue(s); continuing |
| dc | double crochet |
| dtr | double treble crochet |
| dec(s)('d) | decrease(s); decreasing; decreased |
| est | established |
| fdc | foundation double crochet |
| flo | front loop only |
| fol | follows; following |
| fsc | foundation single crochet |
| g | gram(s) |
| hdc | half double crochet |
| inc(s)('d) | increase(s); increasing; increased |
| k | knit |
| lp(s) | loop(s) |
| MC | main color |
| m | marker |
| mm | millimeter(s) |
| patt(s) | pattern(s) |
| pm | place marker |
| p | purl |
| rem | remain(s); remaining |
| rep | repeat; repeating |
| rev sc | reverse single crochet |
| rnd(s) | round(s) |
| RS | right side |
| sc | single crochet |
| sk | skip |
| sl | slip |
| sl st | slip(ped) stitch |
| sp(s) | space(es) |
| st(s) | stitch(es) |
| tch | turning chain |
| tog | together |
| tr | treble crochet |
| WS | wrong side |
| yd | yard |
| yo | yarn over hook |
| * | repeat starting point |
| () | alternate measurements and/or instructions |
| [] | work bracketed instructions a specified number of times |

Concentration Ratings:

- 1 2 3 4** **LITTLE CONCENTRATION REQUIRED.**
Straightforward stitching means your hands can work on autopilot.
- 1 2 3 4** **SOME CONCENTRATION REQUIRED.**
Easily memorized stitch patterns and minimal shaping might require some focus and counting.
- 1 2 3 4** **FAIR AMOUNT OF FOCUS REQUIRED.**
Involved stitch patterns, shaping, or assembly require fairly constant concentration.
- 1 2 3 4** **EXTREME FOCUS REQUIRED.**
Unusual techniques or complex stitch patterns and shaping require constant focus.

Back Post Double Crochet (BPdc)

Yarn over, insert hook from back to front to back around post of corresponding stitch below, yarn over and pull up loop [yarn over, draw through 2 loops on hook] 2 times.



Back Post Double Crochet Two Together (BPdc2tog)

Yarn over and insert hook from back to front to back around posts of next 2 corresponding stitches below, yarn over and pull up loop [yarn over and draw through 2 loops on hook] 2 times.

Front Post Double Crochet (FPdc)

Yarn over, insert hook from front to back to front around post of corresponding stitch below, yarn over and pull up loop [yarn over, draw through 2 loops on hook] 2 times.



Front Post Double Crochet Two Together (FPdc2tog)

Yarn over and insert hook from front to back to front around posts of next 2 corresponding stitches below, yarn over and pull up loop [yarn over and draw through 2 loops on hook] 2 times.

Back Post Half Double Crochet (BPhdc)

Yarn over, insert hook from back to front to back around post of corresponding stitch below, yarn over and pull up loop, yarn over and draw through all 3 loops on hook.

Front Post Half Double Crochet (FPhdc)

Yarn over, insert hook from front to back to front around post of corresponding stitch below, yarn over and pull up loop, yarn over and draw through all loops on hook.

Front Post Half Double Crochet Two Together (FPhdc2tog)

Yarn over and insert hook from front to back to front around posts of next 2 corresponding stitches below, yarn over and pull up loop [yarn over and draw through 2 loops on hook] 2 times.

Foundation Half Double Crochet (fhdc)

Ch 3, yarn over, insert hook in 3rd chain from hook, yarn over and pull up loop (3 loops on hook), yarn over and draw through 1 loop (1 chain made), yarn over and draw through all loops on hook—1 foundation half double crochet. *Yarn over, insert hook under the 2 loops of the “chain” stitch of last stitch and pull up loop, yarn over and draw through 1 loop, yarn over and draw through all loops on hook; repeat from * for length of foundation.

Double Crochet Two Together (dc2tog)

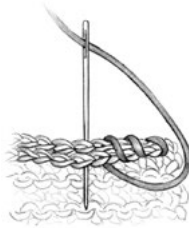
[Yarn over, insert hook in next stitch, yarn over and pull up loop, yarn over, draw through 2 loops] 2 times, yarn over, draw through all loops on hook—1 stitch decreased.

Treble Two Together (tr2tog)

[Yarn over, insert hook in next stitch, yarn over and pull up loop, yarn over and draw through 2 loops on hook] 2 times, yarn over and draw through all 3 loops on hook—1 treble decreased.

Whipstitch

With right side of work facing and working through edge stitch, bring threaded needle out from back to front along edge of piece.

**Half Double Crochet Two Together (hdc2tog)**

[Yarn over, insert hook in next stitch, yarn over and pull up loop] 2 times (5 loops on hook), yarn over and draw through all loops on hook—1 stitch decreased.

Extended Single Crochet (esc)

Insert hook in next stitch or chain, yarn over and pull up loop (2 loops on hook), yarn over and draw through 1 loop (1 chain made), yarn over and pull through 2 loops—1 esc completed.