

4 Free Crochet Infinity Scarf Patterns



crochetme
linking the crochet community

4 Free Crochet Infinity Scarf Patterns

CROCHET INFINITY SCARVES ARE A STYLISH ACCESSORY FOR STAYING WARM. They can be worn in long drapes of lace fabric or wrapped twice or more around your neck for warmth and style. Wear crocheted infinity scarves year round by working them in crisp cotton yarn or lavish wool and cashmere.

In this free eBook, we have chosen four beautiful crochet infinity scarf patterns. Included are lace infinity scarves that are perfect for warm weather, a crochet Möbius infinity scarf that creates a stunning hood, and a gorgeous infinity scarf with an easily memorized pattern. You will find the perfect free infinity scarf pattern in these 4 Free Crochet Infinity Scarf Patterns.

Worked in a fascinating ripply tape cotton yarn, the **Undefined Cowl** by Janet Brani is the perfect lace infinity scarf for warm weather. The open lace stitch transforms after it is blocked to create incredible drape. This will become one of your favorite accessories.

The **Aspen Infinity Cowl** by Linda Permann is the perfect touch of luxury worked in a beautiful merino wool, cashmere, and silk yarn. Not to be outdone, the sophisticated shell stitch are simple and elegant. An understated edging adds the finishing touch for this popular crochet infinity scarf.

The **Metamorphosis Möbius** by Hannah Cuvillo transforms easily from a close cowl with multiple wraps to an elegant head covering and shawl. The lace pattern is worked in rounds. Each pattern repeat works two rounds, one above and one below the Möbius. This construction allows you to easily modify the scarves width.

The design for the **Prairie Lace Cowl** by Toni Rexroat was inspired by a skein of gorgeous worsted-weight gray yarn. The stitch pattern repeat used for this crocheted infinity scarf is quickly memorized and allows you to easily modify the infinity scarf's length.

In these four free crochet infinity scarf patterns, you will find the perfect accessory to dress up a summer blouse, keep your warm in the winter, or add a touch of color to any outfit. Wrap a sumptuous infinity scarf crocheted in a luxurious yarn around your neck or whip up a quick accessory for a perfect gift or finishing touch to any outfit after downloading *4 Free Crochet Infinity Scarf Patterns!*

Best wishes,

P.S. Do you have a friend looking for fashionable crochet infinity scarf patterns? Send them the link to download their own copy of *4 Free Crochet Infinity Scarf Patterns*.

1	Undefined Cowl	page 3
2	Aspen Infinity Cowl	page 5
3	Metamorphosis Möbius	page 6
4	Prairie Lace Cowl	page 8
	Abbreviations and Glossary	page 10

crochetme

4 FREE CROCHET
INFINITY SCARF PATTERNS

CROCHET ME E-BOOK EDITED BY
Toni Rexroat

EDITORIAL STAFF
EDITOR CROCHET ME **Toni Rexroat**

CREATIVE SERVICES
PRODUCTION DESIGNER **Janice Tapia**
PHOTOGRAPHY **As noted**
ILLUSTRATION **Gayle Ford**

©F+W Media, Inc. All rights reserved. F+W Media grants permission for any or all pages in this issue to be copied for personal use.



Undefined Cowl

Janet Brani



Getting Started

FINISHED SIZE 8" wide, 62" circumference.

YARN Tahki Yarns Tahki Ripple (100% cotton; 142 yd [130 m]/1¼ oz [50g];): ocean, 2 balls. Yarn distributed by Tahki-Stacy Charles Inc.

HOOK Size H/8 (5 mm). Adjust hook size if necessary to obtain correct gauge.

NOTIONS Blocking pins, yarn needle.

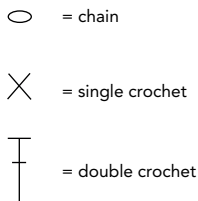
GAUGE 2 shells and 7 rows = 4" in patt.

Notes

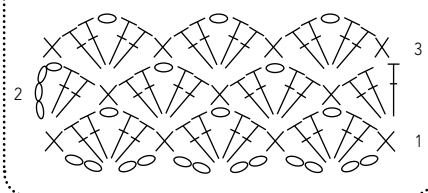
Cowl is worked flat, widthwise, and short ends are sewn tog. Twist is inserted before sewing.

Stitch Guide

Stitch Key



Cowl Diagram



Beginning Shell (beg sh): (Ch 4, 2 dc) in st indicated.

Ending Shell (end sh): (2 dc, ch 1, dc) in st indicated.

Shell (sh): (2 dc, ch 1, 2 dc) in st indicated.

V-stitch (V-st): (Dc, ch 3, dc) in st indicated.

Pattern

COWL

Ch 26.

Row 1: Sc in 2nd ch from hook, [sk 2 ch, sh (see Stitch Guide) in next ch, sk 2 ch, sc in next ch] 4 times, turn—4 sh, 5 sc.

Row 2: Beg sh (see Stitch Guide) in first sc, sc in ch-1 sp of next sh, [sh in next sc, sc in next ch-1 sp] 3 times, end sh (see Stitch Guide) in last sc, turn—5 sh, 4 sc.

Row 3: Ch 1, sc in ch-1 sp, [sh in next sc, sc in next ch-1 sp] 4 times, turn—4 sh, 5 sc.

Rows 4–11: Rep Rows 2–3 four times.

Row 12: Beg sh in first sc, sc in ch-1 sp of next sh, [V-st (see Stitch Guide) in next sc, sc in next ch-1 sp] 3 times, end sh in last sc, turn—2 sh, 3 V-st, 4 sc.

Row 13: Ch 1, sc in ch-1 sp, [V-st in next sc, sc in ch-3 sp] 3 times, V-st in next sc, sc in ch-1 sp, turn—4 V-st, 5 sc.

Row 14: Beg sh in first sc, sc in ch-3 sp of next V-st, [V-st in next sc, sc in next ch-3 sp] 3 times, end sh in last sc, turn—2 sh, 3 V-st, 4 sc.

Row 15: Rep Row 13.

Row 16: Rep Row 14.

Row 17: Ch 1, sc in ch-1 sp, [sh in next sc, sc in ch-3 sp] 3 times, sh in next sc, sc in ch-1 sp—4 sh, 5 sc.

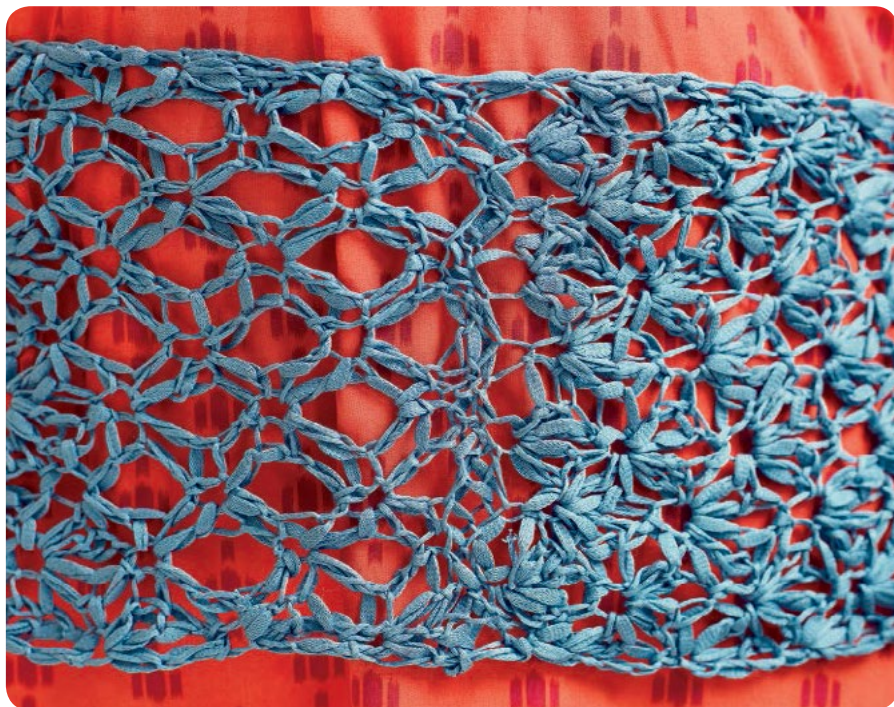
Rows 18–65: Rep Rows 2–17 three times.

Rows 66–80: Rep Rows 2–16.

FINISHING

Fasten off. Weave in ends.

Soak scarf in cold water until fully wet. Roll in a towel and press out excess moisture. Gently stretch to approximately 10" in width and pin to a blocking board. Allow to dry completely. Match short ends of scarf tog with one twist (to create a Moebius) and sew with a loose whipstitch. ❁



PHOTOS BY HARPER POINT PHOTOGRAPHY



Aspen Infinity Cowl

Linda Permann



PHOTOS BY HARPER POINT PHOTOGRAPHY

- 1
- 2
- 3
- 4

Getting Started

FINISHED SIZE 9½" wide, 35" circumference.

YARN TSC Artyarns Tranquility (distributed by Tahki-Stacy Charles Inc.) (60% superfine merino, 25% cashmere, 15% silk; 400 yd [366 m]/2 oz [57 g];): #T-9 tobacco gold, 1 skein.

HOOK Size H/8 (5 mm). Adjust hook size if necessary to obtain correct gauge.

NOTIONS Yarn needle.

GAUGE Three (2 dc, sh) and 8 rows = 4" in patt.

Notes

Cowl is worked flat, widthwise, and short ends are sewn tog. Twist is inserted before sewing.

Stitch Guide

Shell (sh): (2 dc, ch 1, 2 dc) in st indicated.

Pattern

COWL

Ch 46.

Row 1: (RS) Dc in 4th ch from hook (skipped

3 ch count as dc), [sk next 2 ch, sh (see Stitch Guide) in next st, sk next 2 ch, dc in next 2 ch] 6 times—6 sh, 14 dc.

Row 2: Sl st in sp bet first 2 dc, ch 3 (counts as dc), dc in same sp, [sk next 3 dc, sh in ch-1 sp of next sh, sk next 3 dc, 2 dc in sp bet next 2 dc] 6 times—6 sh, 14 dc.

Rows 3–70: Rep Row 2.

FINISHING

Fasten off. Match short ends of scarf tog with one twist (to create a Möbius strip) and sew with whipstitch (see Glossary).

Edging:

Note: Last dc at row end is considered a ch-3 sp. Join yarn with sl st to any ch-3 sp along long edge.

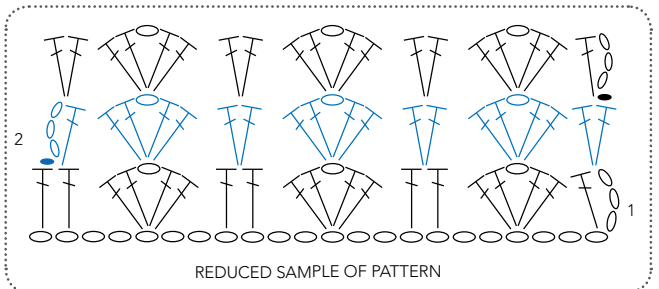
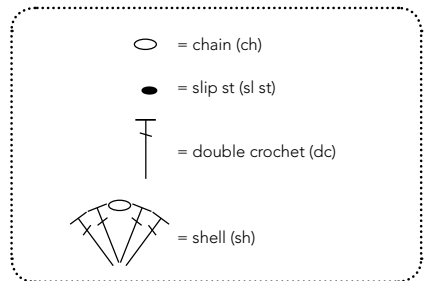
Rnd 1: Ch 1, sc in same sp, ch 3, *sc in next ch-3 sp, ch 3; rep from * around, sl st in first sc to join—140 ch-3 sps.

Rnd 2: Sl st in next 2 ch, ch 1, sc in same sp, ch 3, *sc in next ch-3 sp, ch 3; rep from * around, sl st in first sc to

join—140 ch-3 sps.

Rnd 3: Rep Rnd 2.

Rnd 4: Sl st in first ch-3 sp, ch 1, (sc, ch 3, sc) in same sp, (sc, ch 3, sc) in each ch-3 sp around, sl st in first sc to join. Fasten off. Weave in ends. Block if desired. ❁



REDUCED SAMPLE OF PATTERN



Metamorphosis Möbius

Hannah Cuvillo

1 2 3 4

Getting Started

FINISHED SIZE 40 (45, 50, 55, 60, 65, 70)" circumference. Sample shown in 45".

Piece is meant to rest comfortably around shoulders without constricting movement.

YARN Schoppel Wolle Zauberball 100 (distributed by Skacel) (100% merino; 437 yd [400 m]/3½ oz [100 g]; **(1)**): #2170 blasser schimmer, 2 (2, 2, 2, 2, 3, 3) balls.

HOOK Sizes G/6 (4 mm), H/8 (5 mm). Adjust

hook size if necessary to obtain correct gauge.

NOTIONS Locking st marker (m); yarn needle.

GAUGE 18 sts and 8 rows = 4" in patt on larger hook.

Notes

Foundation row is worked, then twist is inserted before joining work in the rnd. Cowl is worked in joined rnds with RS always facing, alternating the direction of work (from right to left and left to right).

Stitch Guide

Shell (sh): (4 dc, ch 2, dc) in indicated st or sp.

Gauge swatch (multiple of 7 sts + 4):

With larger hook, ch 18, pm in last ch, turn.

Row 1: (3 dc, ch 2, dc) in 4th ch from hook (skipped ch count as dc), *ch 2, sk 6 ch, sh (see above) in next ch; rep from * across, turn.

Row 2: Ch 3 (counts as dc), (3 dc, ch 2, dc) in ch-2 sp of first sh, *ch 2, sh in ch-2 sp of next sh; rep from * across, turn.

Rows 3–8: Rep Row 2.

Pattern

WRAP

With larger hook, loosely ch 186 (214, 235, 256, 277, 305, 326), pm in last ch, turn.

Set Up rnd: (3 dc, ch 2, dc, ch 2) in 4th ch from hook (skipped ch count as dc), *sk 6 ch, (sh [see Stitch Guide], ch 2) in next ch; rep from * to last ch.

Fold work in half, so that the first sh lines up with the last. Twist cowl to work in bottom ridge lp of foundation ch, work (sh, ch 2) in same ch as first sh, *sk 6 ch, (sh, ch 2) in next ch; rep from * to last ch, sl st in marked ch to join, making sure there is only 1 twist in cowl—27 (31, 34, 37, 40, 44, 47) sh.

Rnd 1: Working from left to right, ch 1, sl st in ch-2 sp to the right, ch 1, sl st in next ch-2 sp to the right, proceed working right to left, ch 5, place marker (pm) in 3rd ch (counts as dc and ch 2), *sk (dc, ch 2, 4 dc), work (dc, ch 2, 4 dc, ch 2) in ch-2 sp of next sh; rep from * to last ch-2 sp, (dc, ch 2, 3 dc) in last ch-2 sp, sl st in marked ch to join.

Rnd 2: [Ch 1, sl st in next ch-2 sp] 2 times, ch 3, pm in 3rd ch (counts as dc), work (3 dc, ch 2, dc, ch 2) in same ch-2 sp, *sk sh, work (sh, ch 2) in ch-2 sp of next sh; rep from * to last ch-2 sp, sl st in marked ch to join.

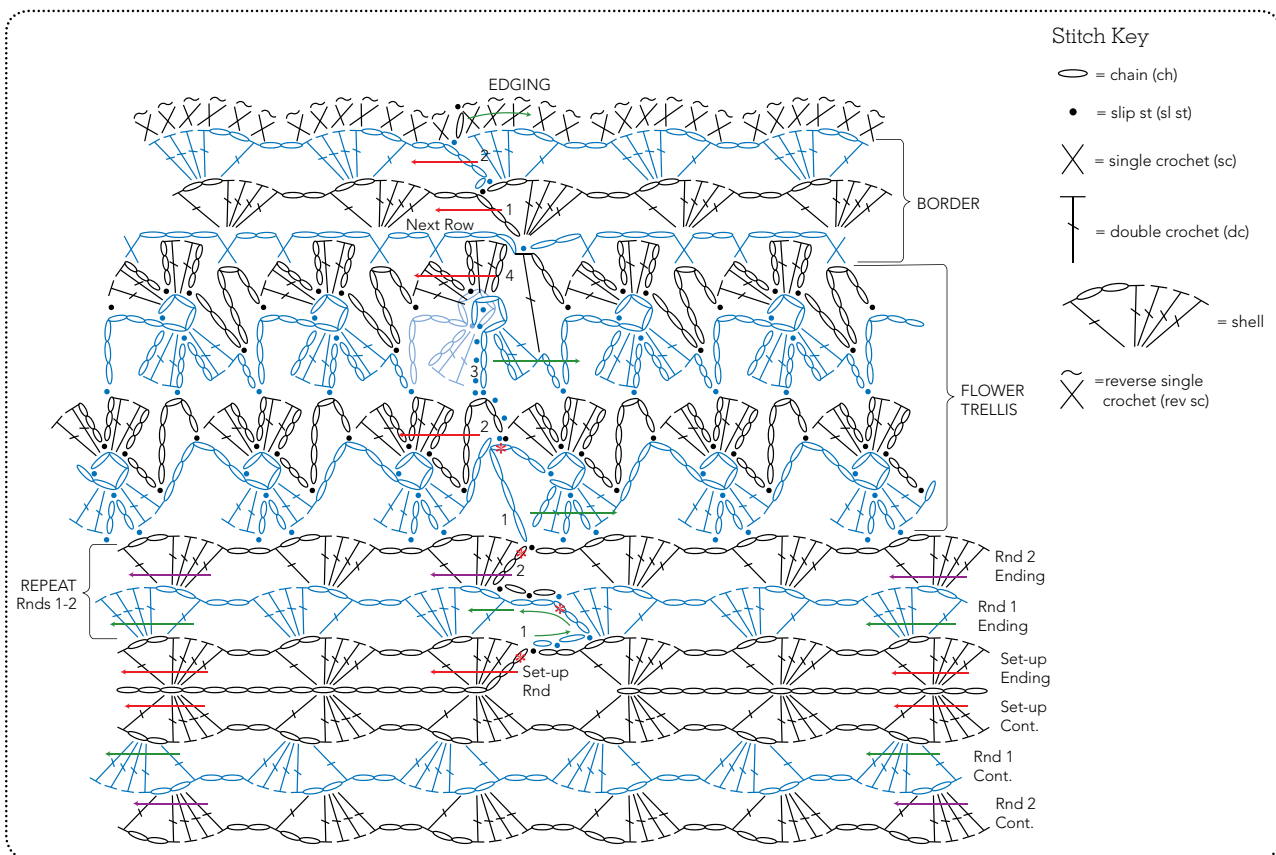
Rep Rnds 1–2 until work measures about 18" from upper to lower edge (or desired depth), ending with Rnd 2.

Flower trellis:

Change to smaller hook.

Rnd 1: Working from left to right, *ch 10, sl st in 4th ch from hook, forming flower base lp, ch 3, dc in lp just made, sl st in next ch-2 sp to the right on previous sh row, ch 2, sl st in base lp, ch 2, sl st in next ch-2 sp to the right on sh row, 2 dc in base lp; rep from * around, ch 3, sl st in 3rd ch of beg ch-10, pm in same ch.

Rnd 2: (Worked from right to left). *Ch 7, sk



2 ch, sl st in next ch, ch 3, (sl st, ch 3, 2 dc, ch 3, sl st, ch 3, 2 dc) in flower base lp from prev rnd, sk 2 ch, sl st in next ch of base ch connecting flower units; rep from * around, working last sl st in marked ch, remove m.

Rnd 3: Sl st in next 3 ch of ch-7 from beg of Rnd 2. Rem of rnd is worked from left to right. Ch 7, sl st in 4th ch from hook, forming flower base lp, ch 3, 2 dc in flower base lp, *ch 3, sl st in top of ch-3 in center petal of next flower, ch 10, sl st in 4th ch from hook, forming flower base lp, ch 3, 2 dc in lp**, sl st in 4th ch of next ch-7, ch 3, sl st in flower base lp, ch 3, 2 dc in base lp; rep from * to last flower; rep from * to **, sl st in top of last ch-7 lp, sl st in first 3 ch of beg ch 7, sl st in first and last base lps of rnd tog, forming one flower unit with 2 petals.

Rnd 4: (Worked from right to left). Ch 3, (2 dc, ch 3, sl st, ch 3, 2 dc) in base lp, sk 2 ch, sl st in next ch, *ch 7, sk (ch 3, sl st, ch 2), sl st in next ch of base ch connecting flower units, ch 3, (sl st, ch 3, 2 dc, ch 3, sl st, ch 3, 2 dc) in flower base lp from prev rnd, sk 2 ch, sl st in next ch; rep from * around, ending with ch 3, dc in ch-3 of first flower petal.

Border:

Next Rnd: *Ch 3, sc in 2nd ch-3 of topmost petal in next flower lp, ch 2, sc in next ch-7 lp; rep from * around, sl st in last dc of rnd 4.

Rnd 1: Ch 5 (counts as dc, ch 2), *sk (ch 2, sc, ch 3), work (sh, ch 2) in next sc; rep from * around to last sh, (4 dc, ch 2) at base of beg ch-5, sl st in 3rd ch of beg ch-5.

Rnd 2: Ch 1, sl st in ch-2 sp to the right, ch 5, *sk (dc, ch 2, 4 dc), work (dc, ch 2, 4 dc, ch 2) in ch-2 sp of next sh; rep from * to last ch-2 sp, (dc, ch 2, 3 dc) in last ch-2 sp, sl st in top of beg ch-3.

Edging:

Ch 1, working from left to right, *work rev sc (see Glossary) in next 3 dc, in ch-2 sp, in next dc, sk next ch-2 sp, rev sc in next dc; rep from * around, sl st in first rev sc to join. Fasten off.

FINISHING

Weave in ends. Block. 🌸



PHOTOS BY HARPER POINT PHOTOGRAPHY



Prairie Lace Cowl

Toni Rexroat

Getting Started

FINISHED SIZE 7" wide and 114" long.

YARN Classic Elite Yarns Princess (40% merino, 25% viscose, 10% cashmere, 15% nylon, 7% angora; 150 yd [137m]/1¾ oz [50 g]): #3477 charcoal, 2 skeins.

HOOK Size: 1/9 (5.50 mm). Adjust hook size if necessary to obtain gauge. Gauge is not critical.

NOTIONS 1" button; 2½" wide and 7" long strap of leather or pleather or create a rectangle of approximate size using crochet.

GAUGE 2 shell patt rep and 7 rows = 4" unblocked; 2 shell patt rep and 6 rows = 4" blocked.

Stitch Guide

Shell Patt

Row 1: Ch 3 (counts as dc here and throughout), dc in next dc, *sk 2 dc, dc in next dc, ch 1, dc in next ch-1 sp, ch 2, dc in same ch-1 sp, ch 1, dc in next dc, sk next 2 dc, dc in next 2 dc; rep from * across working last dc in top of turning ch.

Row 2: Ch 3, dc in next dc, *sk next 2 dc, (3 dc, ch 1, 3 dc) in next ch-2 sp, sk next 2 dc, dc in next 2 dc; rep from * across working last dc in top of turning ch.

COWL

Ch 25.

Set-up row: Dc in 4th ch from hook, *sk next 2 ch, (3 dc, ch1, 3 dc) in next ch, sk next 2 ch, dc in each of next 2 ch; rep from * across. Work Shell Patt (see Stitch Guide) until cowl measures about 98" or desired length. Last row: Ch 3 (counts as dc), dc in next dc, *ch 2, sl st in next ch 1 sp, ch 2, dc in next 2 dc; rep from * across.

FINISHING

Spray block cowl. After twisting one end of cowl 3 times, sl st seam first and last rows together. Sew button to middle of strap. Wrap cowl three times and place strap around two wraps. Seam ends of strap together. ❁

As the editor of Crochet Me, I love the opportunity my job provides me to meet and visit with you. I would like to extend a special thank you to Holly Rexroat for the beautiful photography, and congratulations and thank you to Fransien for the perfect pattern title.



INTERWEAVE CROCHET

Interweave Crochet IS A MUST-HAVE FOR THOSE WHO LOVE TO CROCHET!

Every issue includes scrumptious yarns, the latest resources, detailed how-tos, new techniques and exclusive contemporary crochet patterns. You'll find lots of exciting new designs you can wear, use in your home, or give as gifts.

interweavecrochet.com



Abbreviations

beg	begin(s); beginning
bet	between
blo	back loop only
CC	contrasting color
ch	chain
cm	centimeter(s)
cont	continue(s); continuing
dc	double crochet
dtr	double treble crochet
dec(s)('d)	decrease(s); decreasing; decreased
est	established
fdc	foundation double crochet
flo	front loop only
foll	follows; following
fsc	foundation single crochet
g	gram(s)
hdc	half double crochet
inc(s)('d)	increase(s); increasing; increased
k	knit
lp(s)	loop(s)
MC	main color
m	marker
mm	millimeter(s)
patt(s)	pattern(s)
pm	place marker
p	purl
rem	remain(s); remaining
rep	repeat; repeating
rev sc	reverse single crochet
rnd(s)	round(s)
RS	right side
sc	single crochet
sk	skip
sl	slip
sl st	slip(ped) stitch
sp(s)	space(es)
st(s)	stitch(es)
tch	turning chain
tog	together
tr	treble crochet
WS	wrong side
yd	yard
yo	yarn over hook
*	repeat starting point
()	alternate measurements and/or instructions
[]	work bracketed instructions a specified number of times

Concentration Ratings:

- 1 2 3 4** **LITTLE CONCENTRATION REQUIRED.**
Straightforward stitching means your hands can work on autopilot.
- 1 2 3 4** **SOME CONCENTRATION REQUIRED.**
Easily memorized stitch patterns and minimal shaping might require some focus and counting.
- 1 2 3 4** **FAIR AMOUNT OF FOCUS REQUIRED.**
Involved stitch patterns, shaping, or assembly require fairly constant concentration.
- 1 2 3 4** **EXTREME FOCUS REQUIRED.**
Unusual techniques or complex stitch patterns and shaping require constant focus.

Front Post Double Crochet (FPdc)

Yarn over, insert hook from front to back to front around post of corresponding stitch below, yarn over and pull up loop [yarn over, draw through 2 loops on hook] 2 times.



Front Post Double Crochet Two Together (FPdc2tog)

Yarn over and insert hook from front to back to front around posts of next 2 corresponding stitches below, yarn over and pull up loop [yarn over and draw through 2 loops on hook] 2 times.

Backstitch



Figure 1



Figure 2



Figure 3

Bring threaded needle up between the first two stitches on each piece, then back down through both layers, one stitch to the right (Figure 1). *Bring needle up through both layers one stitch to the left of the previous stitch (Figure 2), then back down through the same hole used before (Figure 3). Repeat from *.

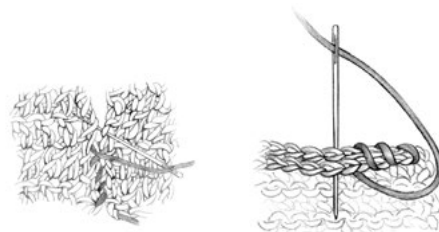
Whipstitch Seams

Place pieces with right sides together. Hold pieces with the two edges facing you.

Step 1: Secure seaming yarn on wrong side of one piece. Pass needle through pieces from back to front at start of seam. This creates a small stitch to begin seam.

Step 2: A little farther left, pass needle through pieces, again from back to front, wrapping seam edge.

Repeat Step 2 to complete seam. Secure end of seaming yarn.



ILLUSTRATIONS BY GAYLE FORD

Double Crochet Two Together (dc2tog)

[Yarn over, insert hook in next stitch, yarn over and pull up loop, yarn over, draw through 2 loops] 2 times, yarn over, draw through all loops on hook—1 stitch decreased.

Single Crochet Two Together (sc2tog)

Insert hook in next stitch, yarn over and pull up loop (2 loops on hook, Figure 1), insert hook in next stitch, yarn over and pull up loop (3 loops on hook), yarn over and draw through all 3 loops on hook (Figure 2)—1 stitch decreased (Figure 3).



Figure 1



Figure 2



Figure 3

Reverse Single Crochet (rev sc)

Working from left to right, insert crochet hook in an edge stitch and pull up loop, yarn over and draw this loop through the first one to join, *insert hook in next stitch to right (Figure 1), pull up a loop, yarn over (Figure 2), and draw through both loops on hook (Figure 3); repeat from *.



Figure 1



Figure 2



Figure 3