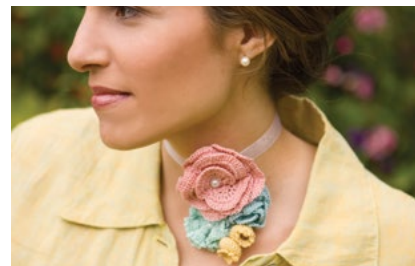


Learn How to
Crochet Flowers with
9 Free
Crochet
Flower Patterns



crochetme
linking the crochet community

Learn How to Crochet Flowers with 9 Free Crochet Flower Patterns

CROCHET FLOWERS INSPIRE CREATIVITY. You can use them to personalize hats, bags, sweaters, and more. Crochet flowers are quick and easy to whip up and a resourceful use of those luscious scraps you just can't bear to toss. I've been creating a bouquets worth of these vibrant, blossoming embellishments, and they're waiting to be attached to finished pieces.

Here we give you instructions for creating five flowers plus a basic single crochet hat in four sizes. Each pattern is perfect for beginner crocheters or experienced crocheters looking for a quick project. You can work the patterns as they are given or mix and match the flowers, embellishing your choice of projects, to create your own unique masterpieces.

The **Colorful Crochet Flowers** by Mags Kandis are a great way to use up those little bits of left over luxury yarns. The possibilities are endless: use them for bookmarks, key fobs, or to embellish a hat. Play with your favorite color combinations for your own unique bouquet.

The **Corsage in Bloom** by Christina Potter combines three thread crochet flowers to create wearable embellishments. She provides instructions for combining these three flower patterns to make either a choker or brooch.

The **Primary Hat** by Toni Rexroat and Susan Hazel provides instructions for a basic single crochet hat in sizes from baby to men's. The eye-catching peony flower is created using four individual crocheted circles. You can vary the size of these circles to modify the flower's size.

The **Ponytail Posies** by Brenda K. B. Anderson uses beautiful flower motifs to create quick and easy crochet hair ties. Gather your tresses with a tiny posy! A small crocheted flower

motif decorates a button covered in a contrasting fabric. Use the type of buttons that have small hooks on the backside.

The **Hialeah Bag** by Simona Merchant Dest is a chic spring bag, with its jaunty surprise color, is just right for your next outing. The simple crocheted flower motifs are worked from the base up in rounds and joined as you go. The sophisticated lining keeps the bag from stretching.

The **Purse of Prosperity** by Sarah Read uses tapestry crochet to create a stunning image of a pomegranate framed by flowers. The pomegranate is a multicultural symbol for prosperity, fruitfulness, abundance, and fertility. It is often cited as a metaphor for a woman's mind—many jeweled thoughts tucked away in hidden chambers. And the tapestry crochet flowers are a great reminder of the beauty of crochet.

The **Promenade Shawl** by Kathryn White is a gorgeous layer with crochet blossoms to add brightness to your wardrobe no matter the time of year. Motifs are joined as you go to shape this triangular crochet shawl. Pearl-studded crochet flowers stroll along the panels, and a delicate edging finishes the elegant look.

So gather up your leftover yarn and use it to embellish your latest pieces or highlight crochet flowers as the highlight of your piece. We hope you enjoy using these free crochet flower patterns to embellish your projects. Share pictures of your projects in the member gallery at CrochetMe.com.

Best wishes,

Editor, CrochetMe.com

1	Colorful Crochet Flowers	page 3
2	Corsage in Bloom	page 5
3	Primary Hat	page 7
4	Fast and Fabulous Ponytail Posies	page 9
5	Hialeah Bag	page 10
4	Purse of Prosperity	page 15
5	Promenade Shawl	page 19
	Abbreviations and Glossary	page 23

crochetme

LEARN HOW TO CROCHET FLOWERS
WITH 9 FREE CROCHET FLOWER PATTERNS

A CROCHET ME E-BOOK EDITED BY
Toni Rexroat

EDITORIAL STAFF
EDITOR CROCHET ME Toni Rexroat

CREATIVE SERVICES
PRODUCTION DESIGNER Janice Tapia
PHOTOGRAPHY As noted
ILLUSTRATION Gayle Ford

©F+W Media, Inc. All rights reserved. F+W Media grants permission for any or all pages in this issue to be copied for personal use.

Colorful Crochet Flowers

design by Mags Kandis

Originally published in *Gifted* (Interweave 2010)



If you're like me, you have little scraps of luscious yarns far too pretty to throw away. These little gems of crochet whimsy use up yarn bits too small for anything useful, and they give you the added enjoyment of experimenting with colorways as you go. Make up a bunch of each of the pieces and then mull all the color-mixing possibilities—you'll be amazed by how wonderful some of the oddest color combinations look! Use them for key fobs, bookmarks, and brooches.

Finished Size: From about 1¼" (3.2 cm) to 2" (5 cm) across, size varies depending on yarn used.

Yarn: Sportweight (#2 Fine) and worsted weight (#4 Medium).

Shown here: Key Ring and Bookmark or Gift Tie: Brown Sheep Nature Spun Sport Weight (100% wool; 184 yd [168 m]/50 g): Small amounts of assorted colors.

Brooch: Frog Tree Alpaca Sport Weight (100% alpaca; 130 yd [119 m]/50 g), Nashua Handknits Creative Focus Worsted Wool (75% wool, 25% alpaca; 220 yd [201 m]/100 g), and Mirasol Sulka (60% merino, 20% alpaca, 20% silk; 55 yd [50 m]/50 g).



Joe Coca



Joe Coca

Part 3: Large Petals

Ch 5, sl st into first ch to form ring. *Ch 8, sc into ring; rep from * 7 more times—8 petals.

Finishing

Assemble parts by inserting the tails of the small petals through the center of the large petals, then inserting the tails of the cluster through the center of the petals. Knot ends tog to secure in place.

Braid

Divide tails into three groups of two strands each and work 3-strand braid as follows for your project.

Key Ring

Work braid for ½" to 1½" (1.3 to 3.8 cm), slide ring onto one group, then cont to braid for desired length. Secure ends with an overhand knot. Trim ends.

Brooch

Work braid for ½" to 1" (1.3 to 2.5 cm). Secure ends with an overhand knot. Trim ends.

Bookmark or Gift Tie

Work braid for or 12" (30.5 cm) or desired length. Secure ends with an overhand knot. Trim ends. ✨

MAGS KANDIS has spent the last 18 years perfecting her distinct style, both as creative director of Mission Falls and for ready-to-wear manufacturers. Her designs appear in publications including *Interweave Knits*, *Vogue Knitting*, *Knitter's*, and the *Interweave Style* book series, including as the editor of *Folk Style*. Mags lives in the heart of Quinte, Ontario.



Joe Coca

Hook: Size F/5 to G/6 (3.75 to 4 mm) for sportweight yarn; size H/7 to I/9 (4.5 to 5.5 mm) for worsted-weight yarn.

Notions: Metal ring and clip for key ring; brooch back or safety pin.

Gauge: Not crucial for project. The bigger the yarn, the bigger the hook, the bigger the gauge, the bigger the flower; and vice-versa.

Skill Level: Easy.

Notes

- For key ring, begin and end each part leaving about a 12" (30.5 cm) tail.
- For brooch, begin and end each part leaving about a 6" (15 cm) tail.
- For brooch, work Part 1 in Frog Tree Alpaca Sport Weight, Part 2 in Nashua Handknits Creative Focus Worsted Wool, and Part 3 in Mirasol Sulka.
- For bookmark or gift tie, begin and end each part leaving about an 18" (45.5 cm) tail.

Flower

Part 1: Cluster

*Ch 8, turn, sl st to end; rep from * 4 times more—5 "stamen" total. Knot tails tog to form cluster.

Part 2: Small Petals

Ch 5, sl st into first ch to form ring. *Ch 6, sc into ring; rep from * 5 more times—6 petals.

Corsage in Bloom

design by Christina Potter

Originally published in *Interweave Crochet*, Spring 2007



Joe Coca

Designer Christina Potter loves the look of items made from crochet thread; the light, lacy effect that it creates is perfect for embellishments. To create a piece that displays the delicacy of crochet thread in a wearable form, she designed this choker that can be easily made into a brooch instead.

Finished Size: About 3" wide and 4" long.

Yarn: Coats Opera Crochet Thread, Size 10 (100% cotton; 251 yd [230 m]/1¼ oz [50 g]): #523 tea rose (A), #581 wintergreen (B), #582 aqua (C), and #583 summer straw (D), 1 ball each.

Hook: Size 7 (1.65 mm) steel hook. Adjust hook size if necessary to obtain the correct gauge. **Note:** Gauge is not essential for this project.

Notions: Tapestry needle; 1 large and 1 medium pearl (optional); jewelry pin back (optional).

Gauge: 7 sc and 6 rows = 1".

Skill Level: Intermediate.

Note

This flower pendant can be attached to a pin back and worn as a brooch or attached to a strap and worn as a choker tied at the back of the neck. Directions for each option are given here.

Choker Strap

With color of your choice, ch 201.

Row 1: Dc in 4th ch from hook, dc in each ch across, turn—199 dc.

Rows 2–3: Ch 3 (counts as dc), dc in next st and in each st across, dc in top of tch, turn. Fasten off. Weave in loose ends.

Base

For choker: With same color used to make strap, join yarn with sl st to 80th dc from one end.

Row 1: Ch 3, dc in each of next 7 sts, turn—8 dc.

Next row: Ch 3 (counts as dc), sk first dc, dc in each st across, dc in top of tch, turn. Work in dc for 6 rows total. Fasten off. Weave in ends. *For brooch:* With D, ch 14.

Row 1: Dc in 4th ch from hook and in each ch across, turn—12 dc.

Next row: Ch 3 (counts as dc), sk first dc, dc in each st across, dc in top of tch, turn. Work in dc for 11 rows total. Fasten off. Weave in ends.

Flowers

Large rose: With A, ch 31.

Rnd 1: Dc in 5th ch from hook, *ch 2, sk next ch, (2 dc, ch 2, 2 dc) in next ch; rep from * across, turn.

Rnd 2: Ch 3 (counts as dc), 6 dc in first ch-2 sp, sl st in next ch-2 sp, *7 dc in next ch-2 sp, sl st in next ch-2 sp; rep from * to tch, 7 dc in beg ch-4 sp—14 petals total.

Rnd 3: Ch 3 (counts as dc), dc first st, *2 dc in each dc across petal, sl st in next sl st; rep from * across, 2 dc in top of tch, turn—196 dc.

Rnd 4: Rep Row 3—392 dc. Fasten off, leaving a long tail. Thread tail on tapestry needle and, beg at center, roll first petal around to form center bud, cont to twist petals around center until desired shape of rose is created; st tail in and out of rose center to secure shape. If desired, sew a large pearl bead to center of rose. *Ruffled open flower:* With B, make a slipknot, leaving a 6" tail. Wrap tail 2 times around first finger of nonworking hand to form ring.

Rnd 1: 20 sc into ring, pull tail to tighten sts around into a circle, sl st to first sc to join—20 sc.

Rnd 2: Ch 3 (counts as dc), dc in same st, 2 dc in each st around, sl st in 3rd ch of beg ch-3 to join—40 dc.

Rnd 3: Rep Row 2—80 dc.

Rnd 4: Ch 1, sc in first st, *ch 3, sc in next st; rep from * around, ch 3, sl st in first sc to join. Fasten off.

If desired, sew small pearl bead to center of flower.

Rosette: With C, ch 6, sl st in first ch to form ring.

Rnd 1: Ch 1, sc into ring, (ch 4, sc into ring) 5 times, ch 4, sl st in first sc to join—6 ch-4 lps.

Rnd 2: Working behind lps just made, sc into ring between next 2 sc from previous rnd, [ch 5, sc into ring between next 2 sc] 5 times, ch 5, sl st in first sc to join—6 ch-5 lps.

Rnd 3: Sc in next front ch-4 lp, ch 3 (counts as dc), (5 dc, sc) in same ch-4 lp, *(sc, 6 dc, sc) in next ch-4 lp; rep from * 4 more times, sl st in first sc to join—6 petals total.

Rnd 4: Ch 1, for each petal work 1 sc in each sc and 2 dc in each dc around, sl st in first sc to join—84 sts. Fasten off.

Rnd 5: Make a slipknot, join thread in any ch-5 lp with sc, (9 dc, sc) in same ch-5 lp, *(sc, 9 dc, sc) in next ch-5 lp; rep from * 4 more times, sl st in first sc to join—6 back petals.

Rnd 6: Rep Rnd 4—120 sts. Fasten off.

Lily of the valley (make 2): With D, make a slipknot with a long tail, wrap tail around first finger of nonworking hand 2 times to form ring.

Rnd 1: 10 sc into ring, pull tail to tighten circle, sl st in first sc to join—10 sc.

Rnd 2: Ch1, sc in each st around, sl st in first sc to join.

Rnd 3: Ch 1, 2 sc in each st around, sl st in first sc to join—20 sc.

Rnds 4–6: Rep Rnd 2.

Rnd 7: Ch 1, *sc in next st, sk next st; rep from * around, sl st in first sc to join—10 sc.

Rnd 8: Ch 1, sc in next st, *ch 3, sc in next sc; rep from * around, ending ch 3, sl st in first sc to join. Fasten off.

Finishing

Arrange flowers as desired and sew to base using crochet thread and tapestry needle. If making a brooch, sew the pin back to the top of the base. Weave in loose ends. ✨

CHRISTINA POTTER learned to crochet from her grandmother when she was ten years old and has been working on improving her skills ever since. She teaches crochet and knitting classes from time to time at a local yarn shop near her home in St. Louis, Missouri.

Primary Hat

design by Toni Rexroat and Susan Hazel Rich



This simple hat is the perfect canvas on which to attach elegant flowers. Inspired by a fabric flower design, this easy and eye-catching bloom can easily be modified in size by working more petal rows.

Finished Size: 15½ (18, 20, 22)" head circumference to fit baby (child, woman, man). Hat shown measures 15½".

Yarn: Debbie Macomber Blossom Street Collection Rosebud (100% superwash extrafine merino; 137 yd [125 m]/1¾ oz [50 g]): #504 petunia (dark purple; MC) and #503 lilac (light purple; CC), 1 ball each. Yarn distributed by Universal Yarn.

Hook: Size 7 (4.5 mm). Adjust hook size if necessary to obtain correct gauge.

Notions: Yarn needle.

Gauge: 19 sc and 21 rows = 4" in sc.

Skill Level: Easy.

Crown:

With MC, make adjustable lp.

Rnd 1: Work 8 sc in adjustable lp, place marker (pm) in first sc to mark beg of rnd.

Rnd 2: Work 2 sc in each sc around—16 sc.

Rnd 3: Work 2 sc in first sc, sc in next sc, *2 sc in next sc, sc in next sc; rep from * around—24 sc.

Rnd 4: Work 2 sc in first sc, sc in next 2 sc, *2 sc in next sc, sc in next 2 sc; rep from * around—32 sc.

Rnd 5: Work 2 sc in first sc, sc in next 3 sc, *2 sc in next sc, sc in next 3 sc; rep from * around—40 sc.

Rnd 6: Work 2 sc in first sc, sc in next 4 sc, *2 sc in next sc, sc in next 4 sc; rep from * around—48 sc.

Rnd 7: Work 2 sc in first sc, sc in next 5 sc, *2 sc in next sc, sc in next 5 sc; rep from * around—56 sc.

Cont in the est pattern, working 1 more sc between inc of 2 sc in same sc, until diameter of crown is $4\frac{3}{4}$ (6, $6\frac{1}{2}$, 7)".

Next rnd: Sc in each sc around. Rep last rnd until length of hat is 6 (8, $8\frac{1}{2}$, 9)". Sl st in next sc. Fasten off and weave in loose ends.

Flower

Petal (make 4)

With CC, ch 4, sl st in first sc to join.

Rnd 1: Ch 1, work 8 sc in ring, place marker (pm) in first sc to mark beg of rnd.

Rnds 2–7: Rep Rnds 2–7 of hat.

Sl st in next sc. Fasten off and weave in loose ends.

Assemble flower: Fold each petal in half 2 times. Place all 4 triangles with long edges together and stitch pointed ends together. Attach flower to hat using photo as a guide. ✨

TONI REXROAT is the editor for Crochet Me. The design for the flower was conceived by Susan Hazel Rich, the former magazine designer for *Interweave Crochet*.



INTERWEAVE CROCHET

Interweave Crochet IS A
MUST-HAVE FOR THOSE WHO
LOVE TO CROCHET!

Every issue includes scrumptious yarns, the latest resources, detailed how-tos, new techniques and exclusive contemporary crochet patterns. You'll find lots of exciting new designs you can wear, use in your home, or give as gifts. Or, maybe you'll find so many exciting crochet projects, you won't know where to start!

interweavecrochet.com

fast & fabulous

Ponytail Posies

Brenda K. B. Anderson




PHOTO BY MATT SCHODORF

Gather your tresses with a tiny posy! A small crocheted motif decorates a button covered in a contrasting fabric. Use the type of buttons that have small hooks on the backside; they do not require any tools to fasten.

1 2 3 4

Getting Started

FINISHED SIZE About 1½" diameter.

YARN Nazli Gelin Garden 10 thread (100% Egyptian giza mercerized cotton; 308 yd [282 m]/1¼ oz [50 g]; ): #700-43 robin egg or #701-35 lime multi; one ball makes many. Thread distributed by Universal Yarn.

HOOK Size 7 (1.65 mm) steel hook. Adjust hook size if necessary to obtain correct gauge.

NOTIONS 1½" half ball cover buttons (must be the kind that requires no tools and has hooks in the back to catch fabric); small piece of thin fabric to cover button; yarn needle; one hair elastic in coordinating color.

GAUGE Motif should measure about 2" diameter.

Notes

Motif is crocheted, then fastened to cover button while snapping back of button in place. Back will secure fabric covering and motif. Use a very thin fabric to cover button so that hooks can also attach to motif.

Pattern

MOTIF

Ch 7, sl st in first ch to form ring.

Rnd 1: Ch 1, 16 sc in ring, sl st in first sc to join—16 sts.

Rnd 2: Ch 5 (counts as hdc and ch 3), [sk next st, hdc in next st, ch 3] 7 times, sl st in 2nd ch of beg ch-5 to join—8 lps.

Rnd 3: Ch 1, [sc, hdc, dc, tr, ch 6, sl st in 6th ch from hook, tr, dc, hdc, sc] in each lp around, sl st in first sc to join. Fasten off.

FINISHING

Using the pattern on the back of cover button package, cut a circle of fabric to specified size. Stretch it tightly over top of button (as directed) and press into hooks on back of button. Place motif on top of button and hook each one of the ch lps over a hook on back of the button. There should be 4 hooks bet each of the 8 lps. You may find it helpful to use your crochet hook to stretch the lps over the hooks. When you are satisfied with the placement of the lps, snap the back of the button in place, securing the fabric and motif to the button at the same time. Weave in ends. Thread a waste piece of thread through the center of the hair elastic. Thread both ends of crochet thread through the shank on the back of the button and pull until hair elastic is centered through the button shank, forming a lp on both sides of button shank. Remove thread from hair elastic. Thread one lp end of hair elastic on one side of button shank through other lp end of hair elastic on other side of button shank, and pull through to attach hair elastic to button shank. ❀



PHOTOS BY JOE COCA

HIALEAH BAG

● ● ● ○ SIMONA MERCHANT-DEST

THIS CHIC SPRING BAG, with its jaunty surprise color, is just right for your next outing. The simple flower motifs are worked from the base up in rounds and joined as you go. The sophisticated lining keeps the bag from stretching.

GETTING STARTED

FINISHED SIZE About 11" wide, 7½" long, and 3" deep.

YARN Tahki Cotton Classic Lite (100% mercerized cotton; 146 yd [135 m]/1¼ oz [50 g]; **(2)**): #4017 steel gray (MC), 4 skeins; #4532 pale lemon yellow (CC1), 3 skeins; #4807 dark turquoise (CC2), 1 skein.

HOOK Sizes E/4 (3.5 mm) and D/3 (3.25 mm). Adjust hook size if necessary to obtain correct gauge.

NOTIONS Stitch markers (m); yarn needle; bag handles 7" in diameter; two pieces of fabric for lining measuring 15 × 19" (including ½" seam allowance); sewing needle, matching thread.

GAUGE 6-petal motif = 3" in diameter with larger hook.

Notes

Use CC2 for motif 33, all other motifs worked with CC1.

Bag is worked from bottom up.

Bag's base is worked in a row, bag's body is worked in rnds.

Sides of bag are constructed of 5-petal flowers; the front and back have 6-petal flowers.

Stitch Guide

Cluster (cl): *Yo, insert hook in next ch-3 sp, yo and pull up lp, yo and draw through 2 lps*, yo 2 times, insert hook in st made by motif join, yo and pull up lp, [yo and draw through 2 lps] 2 times; rep from * to * 1 time, yo and draw through rem 4 lps—2 sts dec'd.

5-petal motif

With larger hook and CC1, ch 5, join with sl st to form ring. **Inner flower:**

Rnd 1: (RS) Ch 1, 10 sc in ring, sl st in top of beg ch to join—10 sc.

Rnd 2: Ch 1, *(sc, ch 5, sc) in first sc, ch 1, sk next sc; rep from * 4 times, sl st in beg ch to join—5 ch-5 sps.

Rnd 3: Ch 1, *(sc, hdc, 4 dc, ch 2, 4 dc, hdc, sc) in ch-5 sp; rep from * 4 times, sl st in beg ch to join—5 flower petals. Fasten off.

Outer petals:

Rnd 4: With MC and pulling petals forward, sl st in any ch-1 sp from Rnd 2, ch 1, (sc, ch 7, sc) in same ch-1 sp, ch 1, *(sc, ch 7, sc) in next ch-1 sp from Rnd 2, ch 1; rep from * 3 times, sl st in beg ch to join—5 ch-7 sps.

Rnd 5: *(Sc, hdc, 6 dc, ch 3, 6 dc, hdc, sc) in ch-7 sp; rep from * 4 times, sl st in first sc to join—5 outer petals. Fasten off.








6-petal motif

With larger hook and CC1, ch 6, join with sl st to form ring. **Inner flower:**

Rnd 1: (RS) Ch 1, 12 sc in ring, sl st in top of beg ch to join—12 sc.

Rnd 2: Ch 1, *(sc, ch 5, sc) in first sc, ch 1, sk

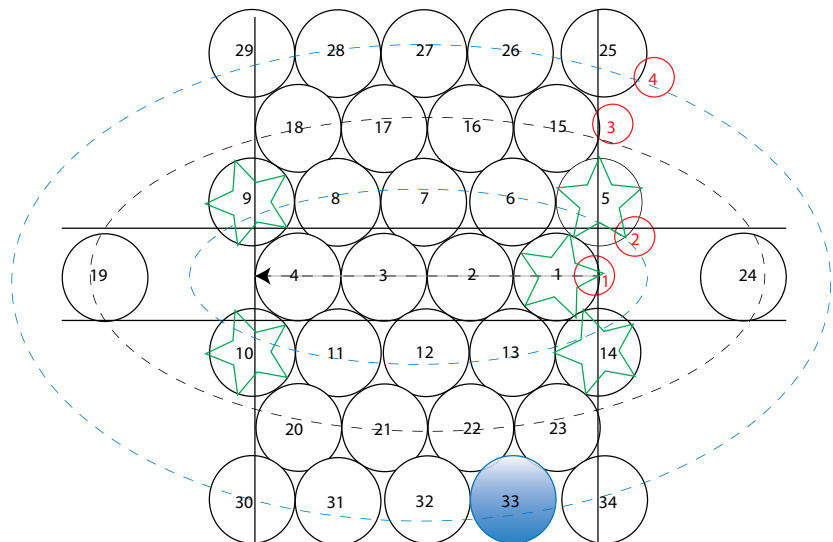
Hialeah Bag Key

-  = 6-petal motif
-  = 5-petal motif
-  = 2-petal join
-  = 3-petal join
-  = 4-petal join
-  = 5-petal join
-  = Join yarn for edge



TIP

Weave in loose ends as you crochet.



next sc; rep from * 5 times, sl st in beg ch to join—6 ch-5 sps.

Rnd 3: Ch 1, *(sc, hdc, 4 dc, ch 2, 4 dc, hdc, sc) in ch-5 sp; rep from * 5 times, sl st in beg ch to join—6 flower petals. Fasten off.

Outer petals:

Rnd 4: With MC, and pulling petals forward, sl st in any ch-1 sp from Rnd 2, ch 1, (sc, ch 7, sc) in same ch-1 sp, ch 1, *(sc, ch 7, sc) in foll ch-1 sp from Rnd 2, ch 1; rep from * 4 times, sl st in beg ch to join—6 ch-7 sps.

Rnd 5: *(Sc, hdc, 6 dc, ch 3, 6 dc, hdc, sc) in ch-7 sp; rep from * 5 times, sl st in first sc to join—6 outer petals. Fasten off.

Motif join (MJ): In place of ch-3 sp on Rnd 5 of working motif (WM), ch 1, sl through ch-3 sp on adjacent motif (AM), ch 1, cont working WM.

Motif 1

Work 5-petal motif (see Stitch Guide).

Motifs 2–3 (two-petal join)

Work 6-petal motif (see Stitch Guide) through Rnd 4.

Rnd 5: *(Sc, hdc, 6 dc, ch 3, 6 dc, hdc, sc) in ch-7 sp; rep from * 3 times, **(sc, hdc, 6 dc, MJ (see Stitch Guide), 6 dc, hdc, sc) in ch-7 sp; rep from **, sl st in beg sc to join—6 outer petals. Fasten off.

Motifs 4–5 (two-petal join)

Work 5-petal motif through Rnd 4.

Rnd 5: *(Sc, hdc, 6 dc, ch 3, 6 dc, hdc, sc) in ch-7 sp; rep from * 2 times, **(sc, hdc, 6 dc, MJ, 6 dc, hdc, sc) in ch-7 sp; rep from ** 1 time, sl st in beg sc to join—5 outer petals. Fasten off.

Motifs 6–8, 11–13, 16–23, 26–33 (four-petal join)

Work 6-petal motif through Rnd 4.

Rnd 5: *(Sc, hdc, 6 dc, ch 3, 6 dc, hdc, sc) in ch-7 sp; rep from * 1 time, **(sc, hdc, 6 dc, MJ, 6 dc, hdc, sc) in ch-7 sp; rep from ** 3 times, sl st in beg sc to join—6 outer petals. Fasten off.

Motifs 9–10 (three-petal join)

Work 5-petal motif through Rnd 4.

Rnd 5: *(Sc, hdc, 6 dc, ch 3, 6 dc, hdc, sc) in ch-7 sp; rep from * 1 time, **(sc, hdc, 6 dc, MJ, 6 dc, hdc, sc) in ch-7 sp; rep from ** 2 times, sl st in beg sc to join—5 outer petals. Fasten off.

Motif 14 (four-petal join)

Work 5-petal motif through Rnd 4.

Rnd 5: (Sc, hdc, 6 dc, ch 3, 6 dc, hdc, sc) in ch-7 sp, **(sc, hdc, 6 dc, MJ, 6 dc, hdc, sc) in ch-7 sp; rep from ** 3 times, sl st in beg sc to join—5 outer petals. Fasten off.

Motifs 15 and 25 (three-petal join)

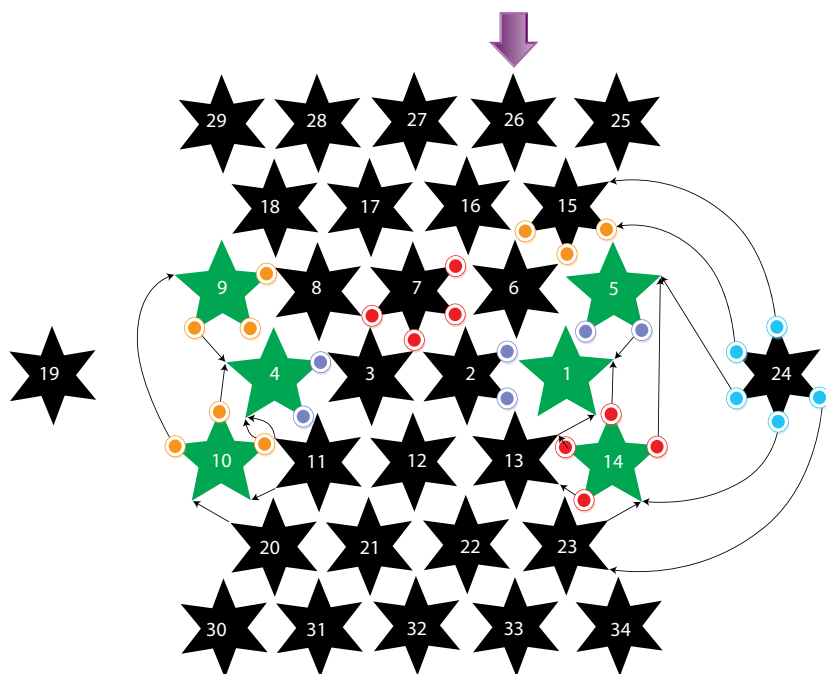
Work 6-petal motif through Rnd 4.

Rnd 5: *(Sc, hdc, 6 dc, ch 3, 6 dc, hdc, sc) in ch-7 sp; rep from * 2 times, **(sc, hdc, 6 dc, MJ, 6 dc, hdc, sc) in ch-7 sp; rep from ** 2 times, sl st in beg sc to join—6 outer petals. Fasten off.

Motifs 24 and 34 (five-petal join)

Work 6-petal motif through Rnd 4.

Rnd 5: *(Sc, hdc, 6 dc, ch 3, 6 dc, hdc, sc) in ch-7 sp, **(Sc, hdc, 6 dc, MJ, 6 dc, hdc, sc) in ch-7 sp; rep from ** 4 times, sl st in beg sc to join—6 outer petals. Fasten off.



Bag

With smaller hook, work Motifs 1–4 (see Stitch Guide) in a row according to diagram beg with Motif 1 at the left in center of diagram. Work motifs 5–14, 15–24, and 25–34 counterclockwise in rnds respectively as shown in diagram.

Finishing

Edging: With larger hook and RS facing, join MC in ch-3 sp of outer petal indicated in diagram.

Rnd 1: Ch 1, *sc in ch-3 sp, sc in each of next 2 dc, hdc in next hdc, sk (3 dc, hdc, 2 sc, hdc, dc), dc in next 5 dc, cl (see Stitch Guide), dc in next 5 dc, sk (dc, hdc, 2 sc, hdc, 3 dc), hdc in next dc, sc in next 2 dc; rep from * 9 times, sl st in beg sc to join—180 sts.

Rnd 2: Ch 1, *sc in next 3 sc, hdc in next hdc, dc in next 4 dc, dc3tog (see Glossary), dc in next 4 dc, hdc in next hdc, sc in next 2 dc; rep from * 9 times, sl st in beg sc to join—160 sts.



Rnd 3: Ch 1, sc in each st across, place marker (pm) in 48th and 128th sts, sl st in beg sc to join. Fasten off.

Handle flap: With smaller hook and RS facing, join yarn at m.

Rows 1–2: Ch 1, sc in next 42 sc, turn—42 sc.

Row 3: (RS) Ch 2, hdc in each sc, turn—42 hdc.

Row 4: Rep Row 1.

Rows 5–15: Rep Rows 3–4 five times.

Rows 16–17: Rep Row 1.

Rep for other side. Fasten off. Weave in ends and block to measurements.

Attach handles: Place each handle on WS of bag and fold handle flap over

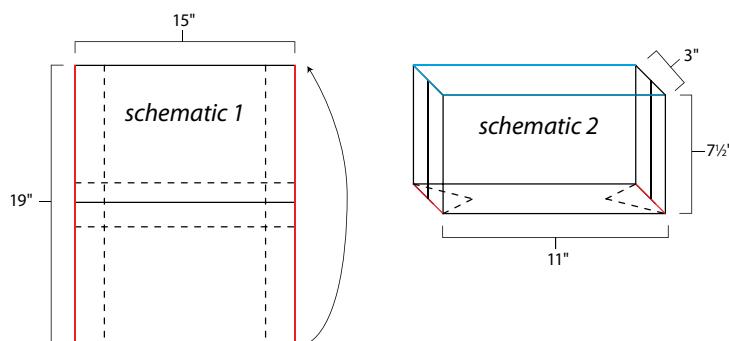
handle, whipstitch (see Glossary) flap inside bag.

Lining: Fold each 15 × 19" piece of fabric in half (see schematic 1) RS facing and sew along 2 shorter sides with ½" allowance, leaving the 15" long side open. Fold along dashed lines to form the base and sides of the bag leaving leftover triangle (see schematic 2). With WS facing, sew along the base of triangle (red line in schematic 2) and fold toward base and secure to base with a stitch. With both fabrics RS tog, pin along the 2 longer and 1 shorter side of opening and sew

together leaving ½" allowance. Turn one of the fabrics inside out with both fabrics RS showing and one of the fabrics nesting into the other. Using backstitch (see Glossary), sew along remaining side folding ½" allowance inside. Insert lining into bag, gather lining to fit, use blindstitch (see Glossary) to sew lining to top of the bag edge. ❀

SIMONA MERCHANT-DEST designs knit and crochet garments and patterns for various magazines and books. See more of her work at www.stylishknits.blogspot.com.

Lining schematic



INTERWEAVE KNITS

Discover knitwear designs that will capture your imagination.

You don't have to be a designer or a knitting pro to make beautiful knitted garments and accessories, and you don't have to hunt all over for inspiring designs.

From cover to cover, *Interweave Knits* magazine gives you great projects, from the beginner to the advanced. Every issue is packed full of captivating smart designs, step-by-step instructions, easy-to-understand illustrations, plus well-written, lively articles sure to inspire.

interweaveknits.com

Crochet the *chic-est* accessories.

Crochet 23 fashion-forward accessories created by up-and-coming designers with *It Girl Crochet*.

It Girl Crochet turns the cutest accessories seen in boutiques into crochet patterns and stitch diagrams. Crochet trendy bags, scarves, belts, and hats with as little as one skein of yarn! Plus, improve your technique with the glam designs using basic crochet as well as more sophisticated techniques such as Tunisian, beading, applique, and motifs.

Sharon Zientara
128 Pages, \$22.99
ISBN 13: 9781620330968



Order online at InterweaveStore.com.



PHOTOS BY JOE HANCOCK

Finished Size

Purse measures 8½" wide × 9½" tall (21.5 × 24 cm), excluding purse frame.

Yarn

Sportweight (#2 Fine).

Shown here: Cascade Ultra Pima Fine (100% pima cotton; 136 yd [125 m]/1¼ oz [50 g]): #3757 zen green (MC), 2 skeins; #3717 sand, #3771 paprika, #3704 syrah, #3752 coral, #3778 lavender, #3753 white peach, #3721 ginseng, #3734 teal, #3744 forest green; 1 skein each.

Hook

Size D/3 (3.25 mm). *Adjust hook size if necessary to obtain correct gauge.*

Notions

Yarn needle; sewing needle and matching thread; ½ yd (45.5 cm) lining material; 5" (12.5 cm) vintage purse frame with matching chain cord; small selection of 6/0 seed beads.

Gauge

15 sts and 12 rows in tapestry crochet, working in blo of sts = 2" (5 cm). Gauge will vary depending on number of colors carried under sts. Overall gauge is not critical, as long as top of bag fits nicely in purse frame.

Notes

Purse is worked in two separate pieces, front and back. Bottom is sewn with sc seam (see Glossary), lining is sewn in place, and then edges are seamed and piece is sewn to frame.

Decs are worked as sc2tog (see Glossary) over first two and last two sts of row where indicated on chart.

(Continued on next page.)



Purse of PROSPERITY

The pomegranate is a multicultural symbol for prosperity, fruitfulness, abundance, and fertility. It is often cited as a metaphor for a woman's mind—many jeweled thoughts tucked away in hidden chambers. This elegant purse, perfect for carrying your own treasures, is adorned with an image of a pomegranate, worked in tapestry crochet.

DESIGNED BY *Sarah Read*



This project is from
It Girl Crochet.

Notes (cont.)

When changing colors, work last yo of st in new color.

Purse is worked in tapestry crochet with colors carried along under sts when not in use. Do not carry more than two colors at a time over large numbers of sts. For quick color changes, carry up to three strands, otherwise strand third color along back of work, tacking it down with a st every inch. Carry new colors for a minimum of 5 sts before and after that color is used (to secure ends).

Number of colors carried will affect gauge of sts. Steam-blocking panels will help even out any inconsistencies, though fabric will still retain some dimension when finished.

Fabric is worked with RS facing throughout. Join yarn at beg of every row and fasten off at the end.

Sts are worked in blo throughout.

Purse

Front

With MC, ch 64.

ROW 1 (RS): Working in blo of ch, foll Front Chart for color changes, working over a strand of G, sc in 2nd ch from hook and in each of next 30 ch, change to G in last st, working over strand of MC with G, sc in next ch, change to MC, working over strand of G with MC, sc in each of last 31 ch, do not turn—63 sc. Fasten off. (Row 1 of Chart complete.)

ROW 2: With RS facing, join MC in blo of first sc, ch 1, sc in blo of first sc, sc in blo of each st across, carrying a strand of yarn throughout, following Chart for color changes, do not turn. Fasten off.

ROWS 3–55: Work in tapestry crochet in blo, carrying one or two colors, foll Chart for color changes, dec 1 sc at each end of row where indicated (see Notes). Fasten off.

Back

With MC, ch 64.

ROW 1 (RS): Working in blo of ch, foll Back Chart for color changes, working over a strand of G, sc in 2nd ch from

hook and in each of next 3 ch, *change to G in last st, working over strand of MC with G, sc in each of next 5 ch, change to MC**, working over strand of G with MC, sc in each of next 5 ch; rep from * 4 times; rep from * to ** once, working over strand of G with MC, sc in each of last 4 ch, do not turn. Fasten off. (Row 1 of Chart complete.)

ROWS 2–55: Work in tapestry crochet in blo, carrying one or two colors, foll Chart for color changes, dec 1 sc at each end of row where indicated (see Notes). Fasten off.

Finishing

Weave in ends. Trim ends in center of work to 1" (2.5 cm).

Steam block bag panels if desired.

Randomly arrange and sew seed beads to center of Front as desired.

Lining

Trace bag panel on lining fabric. Adding ¼" (6 mm) seam allowance all around, cut out lining fabric. Sew bottom and edges, leaving straight section at top open. Hem edges of lining along top opening.

Assembly

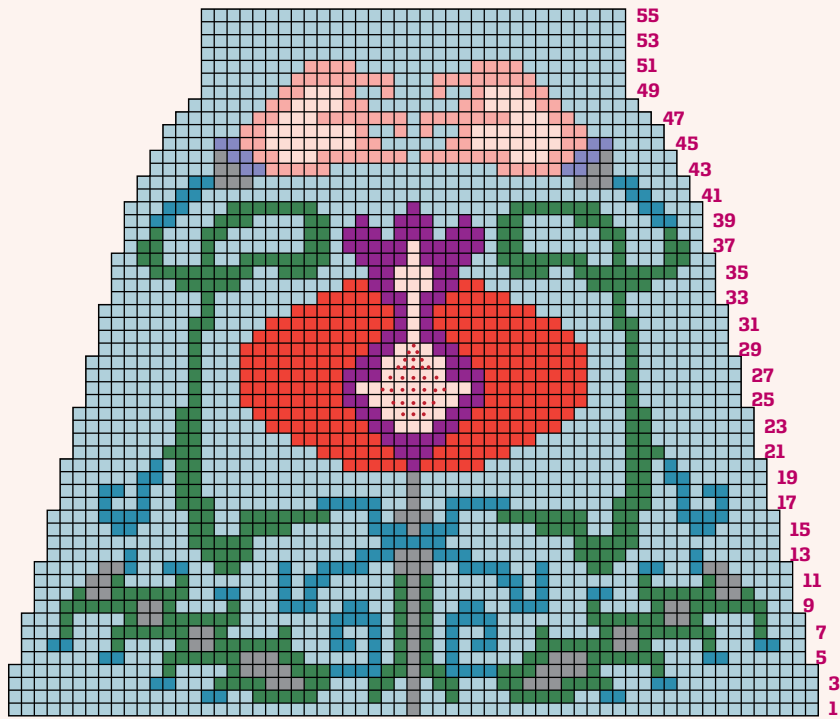
With WS tog, join MC at bottom corner of bag panels. Work sc seam (see Glossary) along bottom edge in free loops of foundation ch. Fasten off.

With needle and thread, sew bottom of lining to bottom inside seam of bag panels.

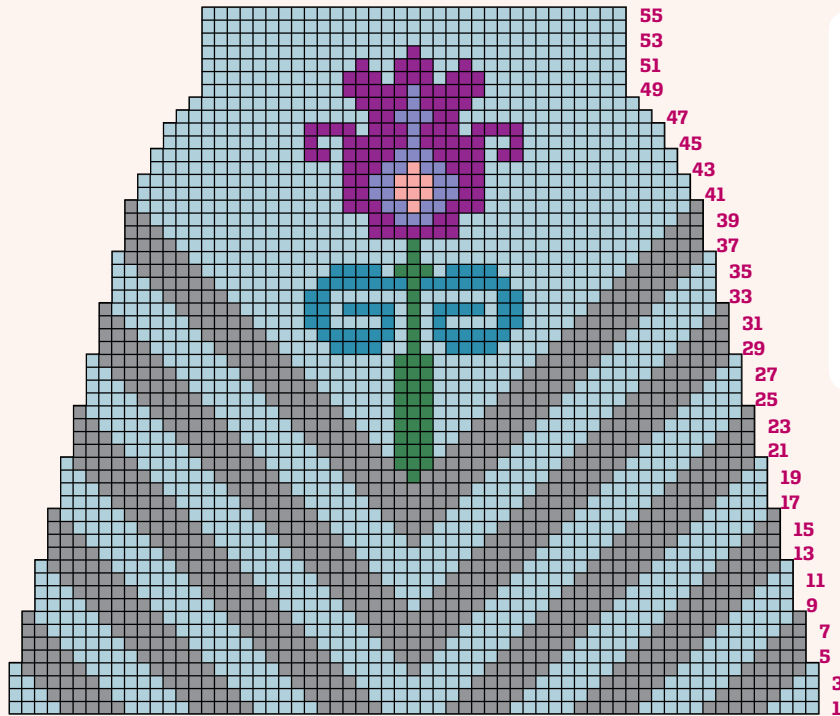
With yarn needle and MC, mattress st (see Glossary) side seams of bag, leaving top straight edges unsewn.

With needle and thread, sew straight top edge of lining to top edges of bag panels using blindstitch (see Glossary).

Remove screws from inside panels of purse frame. Align bag fabric along frame and sew in place with needle and thread. Check that bag opens and closes easily in frame. You may need to rip or sew side seams to get opening exact. Replace metal panels in frame. Attach handle chain to frame clips.



FRONT CHART



BACK CHART

Chart Key

- Zen Green (MC)
- Sand (A)
- Paprika (B)
- Syrah (C)
- Coral (D)
- Lavender (E)
- White Peach (F)
- Ginseng (G)
- Teal (H)
- Forest Green (I)
- Bead



Promenade Shawl

Kathryn White



Getting Started

FINISHED SIZE 69" wide, 32" long.

YARN Manos del Uruguay Serena (60% alpaca, 40% cotton; 170 yd [155 m] /1¼ oz [50 g]; **(2)**): #s2302 english (MC), 5 skeins; #s2680 sea urchin (A), s2334 mineral (B), 1 skein each. Yarn distributed by Fairmount Fibers.

HOOK Size E/4 (3.5 mm) Adjust hook size if necessary to obtain correct gauge.

NOTIONS Yarn needle; strand of forty-five 4 mm pearl beads; thread for sewing on beads; bead sewing needle.

GAUGE Motif = 3" square before blocking.

Notes

Work in ends as you go.

On foundation row of top edging, do not dc in ch-7 sps on full motifs.

Stitch Guide

Picot: Ch 3, sl st in top of indicated st.

Triple picot: Ch 3, sl st in front lp at top of last st made and front strand of same st, ch 4, sl st in same st and front lp of first ch-3 lp, ch 3, sl st in same st and front lps of first ch-3 lp and ch-4 lp.

Mixed cluster at beg of rnd (beg-mcl): Ch 2, yo, insert hook from front to back to front around post of st to be worked, yo and pull up lp, yo and draw through 2 lps on hook, yo and working behind post st just made, insert hook in top of same st, yo and pull up lp, yo and draw through 2 lps on hook, yo and draw through all lps on hook.

Mixed cluster (mcl): *Yo, insert hook in st to be worked, yo and pull up lp, yo and draw through 2 lps on hook*, yo, insert hook from front to back to front around post of same st, yo and pull up lp, yo and draw through first 2 lps on hook; rep from * to *, yo, draw through all lps on hook.

Mixed treble cluster (mtrcl): *Yo 2 times, insert hook in st to be worked, yo and pull up lp, [yo and draw through 2 lps] 2 times*, yo,

insert hook from front to back to front around post of same st, yo and pull up lp, [yo and draw through 2 lps] 2 times; rep from * to *, yo, draw through all lps on hook.

Beginning cluster (beg-cl): Ch 2, [yo, insert hook in st to be worked, yo and pull up lp, yo and draw through first 2 lps on hook] 2 times, yo and draw through all rem lps on hook.

Cluster (cl): [Yo, insert hook in st to be worked, yo and pull up lp, yo and draw through 2 lps on hook] 3 times, yo and draw through all rem lps on hook.

2-tr cluster (2tr-cl): [Yo 2 times, insert hook in st, yo and pull up lp, (yo and draw through 2 lps) 2 times] 2 times, yo, draw through all rem lps on hook.

4tr-cl (4tr-cl): [Yo 2 times, insert hook in st, yo and pull up lp, (yo and draw through 2 lps) 2 times] 4 times.

Motif A:

With MC, ch 5, sl st in first ch to form ring.

Rnd 1: Ch 2 (counts as dc throughout), 15 dc in ring, sl st in top of beg ch-2 to join—16 dc.

Rnd 2: Beg-mcl (see above), picot (see above) in top of mixed cl just made, ch 4, sk next dc, mtrcl (see above), picot in top of mtrcl just made, ch 4, sk next dc, *mcl (see above) in next dc, picot in top of mcl just made, ch 4, sk next dc, mtrcl in next dc, picot in top of mtrcl just made*; rep from * to * around, ending with ch 2, hdc in top of first beg-mcl to join—4 mcl, 4 mtrcl, 8 ch-4 sps.

Rnd 3: Ch 1, sc in same ch-sp, picot in sc just made, sc in same ch-sp, ch 5, 2 sc in next ch-4 sp, picot in last sc made, sc in same sp, ch 9, 2 sc in next ch-4 sp, picot in last sc made, *sc in same sp, ch 5, 2 sc in next ch-4 sp, picot in last sc made, sc in same sp, ch 9, 2 sc in next ch-4 sp, picot in last sc made*; rep from * to * around, ending with sl st in first ch of rnd—24 sc, 8 picot, 4 ch-5 sps, 4 ch-9 sps.

Rnd 4: Sl st to center of next ch-5 sp, sl st in same sp, ch 1, sc in same sp, ch 7, sc in next ch-9 sp, ch 7, sc in same sp, ch 7, *sc in next ch-5 sp, ch 7, sc in next ch-9 sp, ch 7, sc in same sp, ch 7*; rep from * to * around, ending with sl st in first ch to join—12 ch-7 sps. Fasten off. Weave in ends.

Motif B (joined on one side):

Work as for motif A through Rnd 3.

Rnd 4: Sl st to center of next ch-5 sp, sl st in same sp, ch 1, sc in same sp, ch 7, [sc in next ch-9 sp, ch 7, sc in same sp, ch 7, sc in next ch-5 sp, ch 7] 2 times, sc in next ch-9 sp, ch 3, sc in ch-7 sp on corner of adjacent motif, working toward next corner, ch 3, sc in same ch-9 sp on working motif, ch 3, sc in next ch-7 sp on adjacent motif, ch 3, sc in next ch-5 sp on working motif, ch 3, sc in next ch-7 sp on adjacent motif, ch 3, sc in next ch-9 sp, ch 7, sc in same sp, ch 7, sl st in first sc to join. Fasten off.

Motif C (joined on two sides):

Work as for motif A through Rnd 3.

Rnd 4: Sl st to center of next ch-5 sp, sl st in same sp, ch 1, sc in same sp, ch 7, sc in next

ch-9 sp, ch 7, sc in same sp, ch 7, sc in next ch-5 sp, ch 7, sc in next ch-9 sp, [ch 3, sc in ch-7 sp on corner of adjacent motif, working toward next corner, ch 3, sc in same ch-9 sp on working motif, ch 3, sc in next ch-7 sp on adjacent motif, ch 3, sc in next ch-5 sp on working motif, ch 3, sc in next ch-7 sp on adjacent motif, ch 3, sc in next ch-9 sp on working motif] 2 times, ch 7, sc in same sp, ch 7, sl st in first sc to join. Fasten off.

Half motifs:

Half motif D (joined on two sides):

With MC, ch 4, sl st in first ch to form ring.

Row 1: Ch 2 (counts as dc throughout), 8 dc in ring, ch 4, turn—9 dc.

Row 2: Mtrcl in last dc of previous rnd, picot, [ch 4, sk next dc, mcl in next dc, picot, ch 4, sk next dc, mtrcl in next dc, picot] 2 times, ch 1, tr in same st, ch 9, turn—3 mtrcl, 2 mcl, 1 tr, 2 ch-1 sps, 4 ch-4 sps.

Row 3: 2 sc in next ch-4 sp, picot in last sc made, sc in same sp, ch 5, 2 sc in next ch-4 sp, picot in last sc made, sc in same sp, ch 9, 2 sc in next ch-4 sp, picot in last sc made, sc in same sp, ch 5, 2 sc in next ch-4 sp, picot in last sc made, sc in same sp, ch 4, tr in 3rd ch of ch-4 at beg of prev rnd, turn—12 sc, 4 picot, 3 ch-9 sps, 2 ch-5 sps.

Row 4: Ch 1, sc in ch-4 sp, ch 3, sc in ch-7 sp of adjacent motif, ch 3, sc in same ch-9 sp on working half motif, *[ch 3, sc in next ch-7 sp on adjacent motif, ch 3, sc in next ch-sp on working half motif] 2 times, ch 3, sc in corner ch-7 sp of adjacent motifs, ch 3, sc in same ch-9 sp on working half motif; rep from *. Fasten off.

Half motif E (joined on one side):

Work Rows 1–3 of Half motif D.

Row 4: Ch 1, (sc, ch 7, sc) in first ch-9 sp, [ch 7, sc in next ch-sp] 2 times, ch 3, sc in corner ch-7 sp of adjacent motifs, ch 3, sc in same ch-9 sp on working half motif, [ch 3, sc in next ch-7 sp on adjacent motif, ch 3, sc in next ch-sp on working half motif] 2 times, ch 3, sc in corner ch-7 sp of adjacent motif, ch 3, sc in same ch-9 sp on working half motif. Fasten off.

Half motif F (joined on one side):

Work Rows 1–3 of Half motif D.

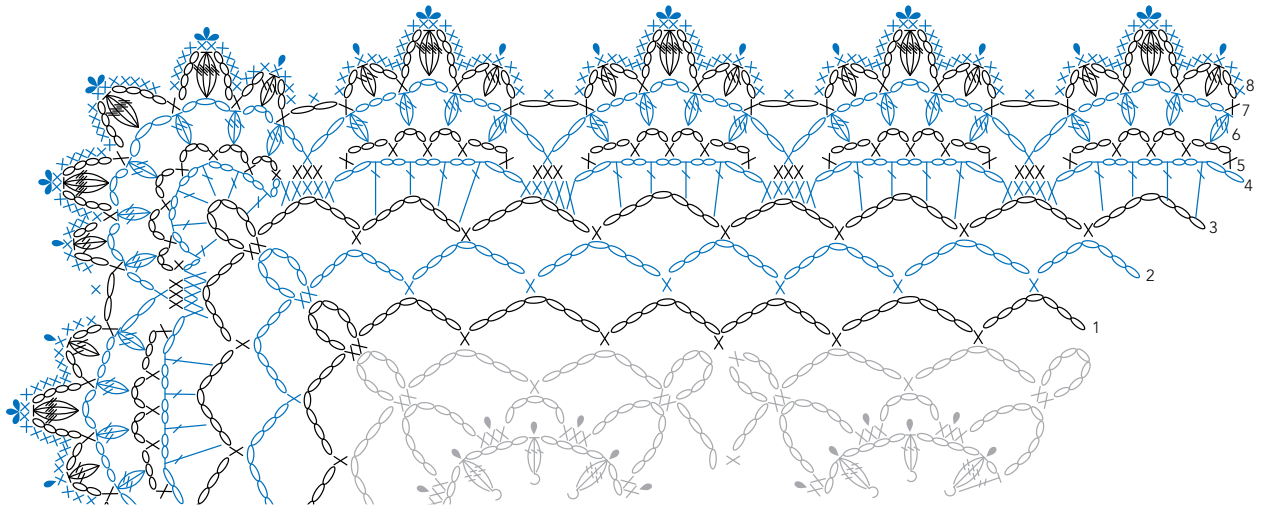
Row 4: Ch 1, sc in ch-9 sp, ch 3, sc in ch-7 sp of adjacent motif, ch 3, sc in same ch-9 sp on working half motif, *[ch 3, sc in next ch-7 sp on adjacent motif, ch 3, sc in next ch-sp on working half motif] 2 times, ch 3, sc in corner ch-7 sp of adjacent motifs, ch 3, sc in same ch-9 sp on working half motif, [ch 7, sc in next ch-sp on working half motif] 2 times, ch 7, sc in same ch-9 sp. Fasten off.

Pattern

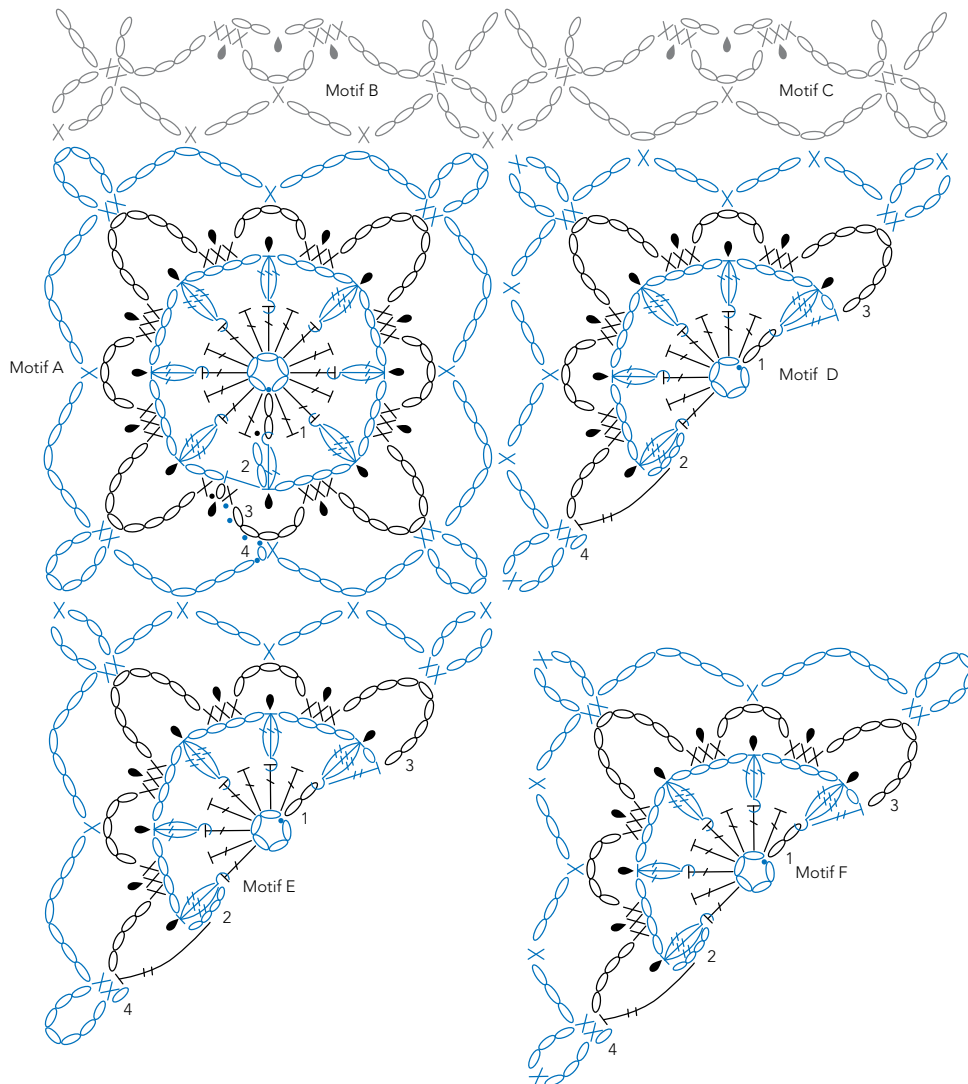
SHAWL

Using placement diagram for motifs, beg at bottom point of triangle, making motif A, working across, use either motif B or C as needed according to chart until there are 10

Partial Diagram of Side Edging



Motif Joins



Stitch Key

- = slip st (sl st)
- = chain (ch)
- ◐ = picot
- ◑ = triple picot
- X = single crochet (sc)
- ┆ = half-double crochet (hdc)
- ┆ = double crochet (dc)
- ◐ = cluster (cl)
- ◑ = 4 treble cluster (4tr-cl)
- ◒ = 2 treble cluster (2tr-cl)
- ◓ = mixed cluster (mcl)
- ◔ = beginning mixed cluster (beg-mcl)
- ◕ = mixed treble cluster (mtrcl)
- = pearl + flower + 2 leaves
- = pearl + flower + 3 leaves

TRI PETAL LEAF (MAKE 3)

With B, leaving a 6–8" tail, ch 5, sl st in first ch to form ring, ch 4, [2tr-cl (see Stitch Guide), picot in top of cl just made, ch 4, sl st in ring, sl st in ch-st in ring, sl st in ring] 3 times, Fasten off.

BI PETAL LEAF (MAKE 42)

With B, leaving a 6–8" tail, ch 6, 2tr-cl in 4th ch from hook, picot in cl just made, ch 4, sl st in same ch, sl st in next 2 ch, ch 3, 2tr-cl, picot in cl just made, ch 4, sl st in same ch. Fasten off.



STAR FLOWER (MAKE 45)

With A, leaving a 6–8" tail, ch 4, 2tr-cl in 4th ch from hook, picot in top of cl just made, ch 3, sl st in same ch at base of 2tr-cl, [(ch 3, 2tr-cl, ch 3, sl st) in same ch] 4 times—5 petals. Fasten off.

FINISHING

Weave in end tails of leaves and flowers. Using long beg tails, sew pearls, leaves, and flowers onto shawl where motifs join as indicated on chart. Tri petal leaves are sewn to center join of each row of flowers. Bi petal leaves go up each side on each row of flowers. Spray block and leave to dry. ❁



Abbreviations

beg	begin(s); beginning
bet	between
blo	back loop only
CC	contrasting color
ch	chain
cm	centimeter(s)
cont	continue(s); continuing
dc	double crochet
dtr	double treble crochet
dec(s)('d)	decrease(s); decreasing; decreased
est	established
fdc	foundation double crochet
flo	front loop only
foll	follows; following
fsc	foundation single crochet
g	gram(s)
hdc	half double crochet
inc(s)('d)	increase(s); increasing; increased
k	knit
lp(s)	loop(s)
MC	main color
m	marker
mm	millimeter(s)
patt(s)	pattern(s)
pm	place marker
p	purl
rem	remain(s); remaining
rep	repeat; repeating
rev sc	reverse single crochet
rnd(s)	round(s)
RS	right side
sc	single crochet
sk	skip
sl	slip
sl st	slip(ped) stitch
sp(s)	space(es)
st(s)	stitch(es)
tch	turning chain
tog	together
tr	treble crochet
WS	wrong side
yd	yard
yo	yarn over hook
*	repeat starting point
()	alternate measurements and/or instructions
[]	work bracketed instructions a specified number of times

Concentration Ratings:

- 1 2 3 4** **LITTLE CONCENTRATION REQUIRED.**
Straightforward stitching means your hands can work on autopilot.
- 1 2 3 4** **SOME CONCENTRATION REQUIRED.**
Easily memorized stitch patterns and minimal shaping might require some focus and counting.
- 1 2 3 4** **FAIR AMOUNT OF FOCUS REQUIRED.**
Involved stitch patterns, shaping, or assembly require fairly constant concentration.
- 1 2 3 4** **EXTREME FOCUS REQUIRED.**
Unusual techniques or complex stitch patterns and shaping require constant focus.

Crochet Chain (ch)

Make a slipknot on hook, *yarn over and draw through loop of slipknot; repeat from * drawing yarn through last loop formed.



Slip Stitch (sl st)

*Insert hook in stitch, yarn over and draw loop through stitch and loop on hook; repeat from *.



Single Crochet (sc)

*Insert hook in stitch, yarn over and pull up loop (Figure 1), yarn over and draw through both loops on hook (Figure 2) repeat from *.

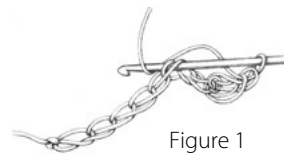


Figure 1

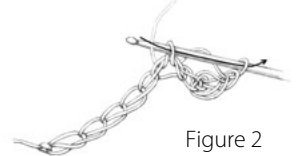


Figure 2

Double Crochet (dc)

*Yarn over, insert hook in stitch, yarn over and pull up loop (3 loops on hook; Figure 1), yarn over and draw through 2 loops (Figure 2), yarn over and draw through remaining 2 loops (Figure 3); repeat from *.



Figure 1



Figure 2



Figure 3

Treble Crochet (tr)

*Yarn over 2 times, insert hook in stitch, yarn over and pull up loop (4 loops on hook; Figure 1), yarn over and draw through 2 loops (Figure 2), yarn over and draw through 2 loops, yarn over and draw through remaining 2 loops (Figure 3); repeat from *.



Figure 1



Figure 2



Figure 3

Single Crochet Two Together (sc2tog)

Insert hook in next stitch, yarn over, pull up loop (2 loops on hook, Figure 1), insert hook in next stitch, yarn over, pull up loop (3 loops on hook), yarn over and draw through all 3 loops on hook (Figure 2)—1 stitch decreased (Figure 3).



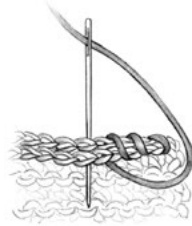
Figure 1

Figure 2

Figure 3

Whipstitch

With right side of work facing and working through edge stitch, bring threaded needle out from back to front along edge of piece.



Blindstitch

Make knot in end of thread to tack in place. Beginning with needle inside folded edge of fabric, bring needle through fabric to outside of crocheted piece. Pick up stitch of crocheted fabric and bring needle back in through folded edge of fabric. Repeat to end of fabric.

Mattress Stitch

With RS facing, use threaded needle to *bring the needle through the center of the first stitch or post on one piece, then through the center of the corresponding stitch or post of the other piece. Repeat from * to end of seam.

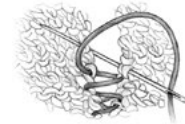


Figure 1

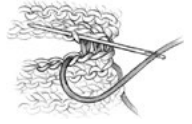


Figure 2

Backstitch

Bring threaded needle up between the first 2 stitches, then back down through both layers, 1 stitch to the right, *bring needle up through both layers 1 stitch to the left of the previous stitch, then back down through the same hole used before; repeat from *.

Crochet Gauge

To check gauge, chain 30 to 40 stitches using recommended hook size. Work in pattern stitch until piece measures at least 4" (10 cm) from foundation chain. Lay swatch on flat surface. Place a ruler over swatch and count number of stitches across and number of rows down (including fractions of stitches and rows) in 4" (10 cm). Repeat two or three times on different areas of swatch to confirm measurements. If you have more stitches and rows than called for in instructions, use a larger hook; if you have fewer, use a smaller hook. Repeat until gauge is correct.