

CROCHET CABLE STITCH GUIDE:

4 Free *Patterns +* **Crochet Cables** *Tutorial*



CROCHET CABLE STITCH GUIDE: 4 Free Patterns + Crochet Cables Tutorial

I HAVE ALWAYS LOVED CABLES, but most of the cabled sweaters and accessories I saw were knitted. Surely, I thought, you can crochet cables. Then I was introduced to the beauty of crocheted cables, and I was hooked. Strands of crocheted post stitches step around and behind each other in an elegant dance. The steps create the swirls of a crocheted cable. You will be quickly hooked as well.

In this free eBook, we have gathered an introduction to post stitches, the most common method of creating crochet cables, as well as four tips to make cables crisper and easier to create. Four crochet cable patterns include basic patterns to introduce you to cable and more complicated cables for intricate designs.

Learn how to create the deceptively easy front and back **Post Stitches**. These stitches are easily created by shifting where the hook is inserted. Once you have mastered these three-dimensional stitches take the next step and use them to build innovative crochet cables.

Learn How to Crochet Cables with Four Tips will teach you all of the tips and tricks for creating the perfect crochet cables, including how to minimize gaps and work behind stitches to create a tight cable. These four tips on how to crochet cables will help you create a stunning cable crochet project.

The **Flower and Vines Bag** by Melissa Mitchell is the perfect introduction to the simple crochet cable. Two easy crocheted cables are worked on each side of this elegant and sturdy bag. Flowers embellishing a stitched trellis add the finishing touch to this cabled bag.

A pair of **Hiking Socks** by Kim Kotary are the perfect option for a cold evening. The unique cable construction of the cuffs provides an additional option for creating crochet cables. Thick feet make these socks incredibly warm and mean your socks will survive plenty of wear and tear.

The **Stone Path Hat** by Lisa Naskrent uses two different types of crochet cables, one that creates an infinite figure eight and a second more solid cable, but all of the shaping is worked in the single crochet stitches between the cables. This pattern includes a stitch diagram, so you can see the construction of cables as they are formed.

The **Big Thompson Vest** by Shannon Mullett-Bowlsby is a stylish option for men and women. Crochet post stitches are worked in a bold cable across front and back. A tall ribbed collar can be folded down or zipped up for extra warmth. This gorgeous crochet cabled vest is the perfect layer for a day outside.

Learn how to crochet cables today and discover tips for creating the perfect cables. Download *Crochet Cable Stitch Guide: 4 Free Patterns + Crochet Cables Tutorial* today and start crocheting beautifully textured cables. We would love to see your work; share your pictures in the Crochet Me Member Gallery.

Best wishes,

P.S. Do you have a friend who loves to explore new stitches or would love the crochet cable patterns in this free eBook? Send them the link to download their own copy of *Crochet Cable Stitch Guide: 4 Free Patterns + Crochet Cables Tutorial*.

Post Stitches page 3

Learn How to Crochet Cables with Four Tips ... page 4

1 Flowers and Vines Bag page 6

2 Hiking Socks page 9

3 Stone Path Hat page 14

4 Big Thompson Vest page 17

Abbreviations and Glossary page 20

crochetme

CROCHET CABLE STITCH GUIDE:
4 FREE PATTERNS + CROCHET CABLES TUTORIAL

A CROCHET ME E-BOOK EDITED BY

Toni Rexroat

EDITORIAL STAFF

EDITOR CROCHET ME Toni Rexroat

CREATIVE SERVICES

PRODUCTION DESIGNER Janice Tapia

PHOTOGRAPHY As noted

ILLUSTRATION Gayle Ford

©F+W Media, Inc. All rights reserved. F+W Media grants permission for any or all pages in this issue to be copied for personal use.

Post Stitches

Originally published in *Interweave Crochet*, Fall 2008

Post Stitches

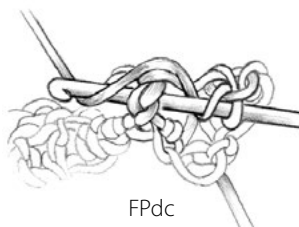
Post stitches are made exactly like basic stitches, with one exception. Instead of inserting your hook into one or both loops of a stitch in the previous row, insert your hook around the front or back of the stitch's post. Doing so pushes the post forward or backward, allowing you to make patterns out of the stitches in relief. Post stitches are used to create the effect of cables, ribs, piping, and any number of variations.

Double crochet is commonly used for post stitches, but any basic stitch may be substituted. You must complete at least one row or round of stitches before working post stitches.



Front Post Double Crochet (FPdc)

1. Yo, insert hook from front to back to front around the post of the next st in the previous row or rnd.
 2. Yo and pull up lp.
You can see that the post of the stitch has already been pushed toward you.
 3. [Yo, draw through 2 lps on hook] 2 times to complete the dc.
- Rep Steps 1–3.



FPdc



Back Post Double Crochet (BPdc)

1. Yo, insert hook from back to front to back around the post of the next st in the previous row or rnd.
 2. Yo and pull up lp.
You can see that the post of the stitch has already been pushed away from you.
 3. [Yo, draw through 2 lps on hook] 2 times to complete the dc.
- Rep Steps 1–3.



BPdc

Learn How to Crochet Cables with Four Tips

by Toni Rexroat

Originally published online for CrochetMe.com



PHOTO BY JOE HANCOCK

Strands of crocheted post stitches step around and behind each other in an elegant dance. The steps create the swirls of a crocheted cable.

But like the steps of a dance, learning just where to place your hook when working cables can take a bit of practice—and an instructor is always welcome. Here are a few tips to guide you through some of the trickier parts of crocheted cable construction.

1. Keep your pattern close at hand. Even advanced crocheters refer to the pattern when working the cable-cross rows of a cable. Sometimes it's hard to remember if you work the second set of stitches over or under the previously worked strand of the cable. With the digital magazines, I keep the pattern on my laptop, which travels with me wherever you go. Digital magazines make great travel companions. Plus the pages never wear out!



PHOTOS BY TONI REXROAT

2. Work behind the stitches just worked.

With cables, the “strands” weave over and under each other. To create this woven construction, you skip stitches, and then work over the top of or behind the stitches just worked. When working behind the stitches just created, work into the skipped stitches from front to back as normal.

Some patterns instruct you to work a front post double crochet behind the stitches just worked. To do this, insert your hook behind the previously worked stitches on the working row and make a front post double crochet around the skipped stitch inserting your hook from front to back to front around the stitch in the normal manner. This ensures that the first set of stitches lies on top of the second set of stitches worked.



If you have trouble inserting your hook in the skipped stitches, pull the skipped stitches to the left of the cable strand already worked. Once you have worked into the skipped stitches, allow those stitches to fall back behind the top strand of the cable.



3. Minimize gaps. Long stitches, such as treble crochets, worked over skipped stitches can become loose. Pull the loop on your hook tight before yarning over. When working the stitch, hold the yarn overs and original loop close together when yarning over and drawing through the loops.



4. And finally, don't let the intricate look of crochet cables intimidate you. Use these tips and jump in.

Try a simple crochet cable with the Cables and Lace Broomstick hat in *Eight Free Crochet Hat Patterns Crochet Hats with Crochet Me*.



KATHRYN MARTIN

Flower and Vines Bag

design by Melissa Mitchell

Originally published in *Interweave Crochet*, Fall 2007

INSPIRED BY FLOWER VINES growing up a chain-link fence in late summer, this pretty and sturdy bag holds all you need for a day out or an evening of fun. For those who haven't yet made crochet cables, this bag is a good project to learn on.

Finished Size 16" wide across base, 9½" wide across top opening, and 15" tall.

Yarn Reynolds Soft Sea Worsted (100% wool; 77 yd [70 m]/1¾ oz [50 g]); #: #9213 light grey (MC), 6 skeins; #9321 plum (A), 2 skeins; #9652 olive green (B), 1 skein. Yarn distributed by JCA.

Hooks Sizes H/8 (5 mm) and I/9 (5.5 mm). Adjust hook sizes if necessary to obtain the correct gauge.

Notions Yarn needle; purse handles, 8"; ½ yd fabric for lining (optional); magnetic snap closure (optional); sharp sewing needle and matching thread (optional).

Gauge 13 sc and 15 rows = 4" with smaller hook.

Skill Level Intermediate.

Stitch Guide

Front Post Double Crochet (FPdc): Yo, insert hook from front to back to front around the post of the corresponding st 2 rows below, yo, draw up a lp, [yo, draw through 2 lps on hook] twice.

Cable Pattern:

Row 1: Sc in 2nd ch from hook and in each ch across, turn.

Row 2 and all even rows: Ch 1, sc in each sc across, turn.

Row 3: Ch 1, sc in next 14 sc, *FPdc (see Stitch Guide) around next sc 2 rows below, sk sc behind FPdc, sc in next sc, FPdc around next sc 2 rows below, sk sc behind FPdc, place marker (pm), sc in next 14 sc; rep from * to end, turn.

Row 5: Ch 1, sc in next 14 sc, *FPdc around next FPdc 2 rows below, sk sc behind FPdc, sc in next sc, FPdc around next FPdc 2 rows below, sk sc behind FPdc, sc in next 14 sc; rep from * to end, turn.

Row 7 (cable row): Ch 1, sc in next 14 sc, *FPdc around FPdc 2 sts forward and 2 rows below, sk sc behind FPdc, sc in next st, FPdc around FPdc 2 sts back and 2 rows below, sk sc behind FPdc (cable cross made), sc in next 14 sc; rep from * to end, turn.

Row 9: Rep Row 5.

Rep Rows 4–9 for patt.

Bag Side (make 2)

With smaller hook and MC, ch 49. Beg with Row 1 work cable patt (see Stitch Guide)—48 sts. Work Rows 1–9 of cable patt, then rep Rows 4–9 six times, then rep Rows 4–8 once.

Row 51 (dec row): Ch 1, sc2tog (see Glossary) 7 times, *FPdc around next FPdc 2 rows below, sk sc behind FPdc, sc in next stitch, FPdc around next FPdc 2 rows below, sk sc behind FPdc, sc2tog 7 times; rep from * to end, turn—27 sts.

Row 52: Ch 1, sc in each st across. Fasten off.

Flowers (make 26)

With larger hook and A, ch 4, join with sl st to form ring. *Ch 3, 2 dc in ring keeping last 2 lps of each dc on hook, yo and draw through all 3 lps on hook; ch 3, sl st in ring; rep from * 4 more times—5 petals. Do not join. Fasten off and weave in loose ends.

Middle Panel Vines (make 2)

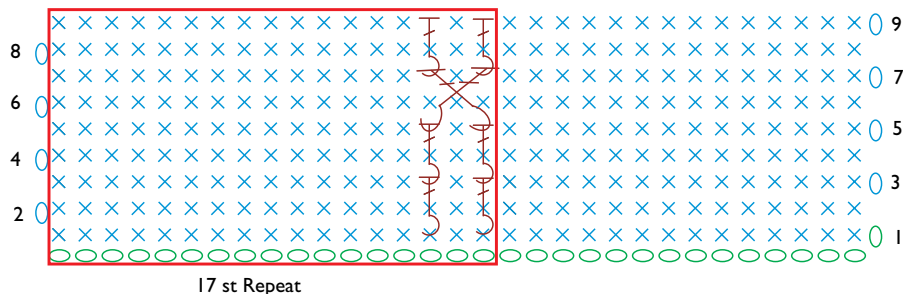
With larger hook and B, ch 16, *remove hook from st, insert hook in 10th ch from last ch made and sl st in last ch made (left facing leaf lp made), ch 20, sl st in 10th ch from hook (right facing leaf lp made), ch 20; rep from * once, then remove hook from st, insert hook in 10th ch from last ch made and sl st in last ch made, ch 6—5 leaf lps. Fasten off. With yarn needle and B, sew 1 vine centered between the 2 cables on each bag side.

Outside Panel Vines (make 4)

With larger hook and B, *ch 20, sl st in 10th ch from hook (right facing leaf lp made), ch 20, remove hook from last ch made, insert hook in 10th ch from last ch made and sl st in last ch made (left facing leaf lp made); rep from * once, ch 10—4 leaf lps. Fasten off. With yarn needle and B, sew 1 vine centered bet the left cable and the left side edge; place 2nd vine centered bet the right cable and the right side edge; rep on opposite bag side (2 on each bag side).

Cable Chart

- chain (ch)
- × single crochet (sc)
- ⌈ front post double crochet (FPdc)
- patt repeat



Handle Loops (make 4)

With smaller hook and B, ch 8, sl st in 2nd ch from hook and in the next 6 ch. Fasten off.

Finishing

With yarn needle and MC, sew flowers to the outside of bag on top of vines next to leaf lps. The center vine has 5 flowers and each side panel has 4 flowers. Rep flower placement on other bag side. With MC, embroider 3 French knots (see Glossary) in the center of each flower. Hold sides of bag with RS tog and pin in place around 3 edges. With MC and larger hook, sc both bag sides tog around 3 edges, working 3 sc in corner sts and leaving

the top edge open. Remove pins, turn bag RS out. With MC and larger hook, sc 1 row around top of bag. Join with sl st in first sc, ch 1, work 1 row of rev sc (see Glossary) around top edge. Fasten off. With yarn needle and B, sew handle lps through bottom of handles to top of bag, matching lps to top of vines. Bag can be lined with fabric. Magnetic snap closure can be inserted in center top of lining bet handles.

MELISSA MITCHELL lives in Royal Oak, Michigan, with her three kitty companions. She fell in love with yarn when she received a box of pale pink mohair for Christmas when she was eleven.

Size

To fit average men's shoe sizes 8–12.

Finished Measurements

Length: about 10" (25.5 cm).

Circumference: about 8" (20.5 cm).

Yarn

Sock weight (#1 Super Fine).

Shown here: Cascade *Heritage Silk* (85% merino superwash wool, 15% Mulberry Silk; 437 yd [400 m]/ 3.5 oz [100 g]): #5608 Pine, 3 hanks.

Hook

Size 3 (2.1 mm) steel hook or size needed to obtain gauge.

Notions

Stitch markers; tapestry needle.

Gauge

38 sts and 40 rnds = 4" (10 cm) in sc stitch using size 3 (2.1 mm) steel hook.

Take time to check gauge.

Hiking Socks

These heavy, sturdy socks are just the thing to wear under boots on a cold day. The thick feet offer tons of warmth, and the unique cable construction in the cuff makes them fascinating to stitch. They definitely will survive a lot of wear and tear.

✿ **DESIGNED BY KIM KOTARY** ✿

STITCH GUIDE

Fsc (Foundation single crochet)

Start with a slipknot, ch 2, insert hook in 2nd ch from hook, yarn over and draw up a loop, yarn over and draw through 1 loop (the chain), yarn over and draw through 2 loops (the sc). The following stitch is worked under the forward 2 loops of the stem of the previous stitch (into the chain). *Insert hook into the face of the chain and under the nub at the back of the chain, yarn over and draw up a loop, yarn over and draw through 1 loop (the chain), yarn over and draw through 2 loops (the sc). Repeat from * for the length of foundation.

FPtr (Front Post treble crochet)

Yarn over 2 times, insert hook from front to back to front around the post of the corresponding stitch below, yarn over and pull up loop [yarn over, draw through 2 loops on hook] 3 times.

FPdc (Front Post double crochet)

Yarn over, insert hook from front to back to front around post of corresponding stitch below, yarn over and pull up loop [yarn over, draw through 2 loops on hook] 2 times.

BPdc (Back Post double crochet)

Yarn over, insert hook from back to front to back around post of corresponding stitch below, yarn over and pull up loop [yarn over, draw through 2 loops on hook] 2 times.

Sc2tog (Single crochet 2 together)

Insert hook in next stitch, yarn over and pull up loop (2 loops on hook), insert hook in next stitch, yarn over and pull up loop (3 loops on hook), yarn over and draw through all 3 loops on hook.

NOTES

- ❖ Socks are worked toe up with an afterthought heel.
- ❖ Foot and heel are worked in continuous rounds without joining.
- ❖ Cuff and ribbing are worked in joined rounds.



PHOTOGRAPHY BY JOE HANCOCK

Instructions

Toe

Rnd 1: Ch 2, 17 Fsc. Sc in same ch as last Fsc, place marker, sc in same place as prev st, sc in base of next 16 Fsc, sc in same st as prev st, place marker—36 sts.

Rnd 2 (Inc): *2 sc in next sc, sc in each sc across to one st before next marker, 2 sc in next sc, slip marker; repeat from * once more—40 sts.

Repeat Rnd 2, increasing 4 sts per rnd (before and after markers) until there are 80 sts.

Foot

Remove 1st marker, leaving 2nd marker to indicate end of rnd. Move marker up at end of each rnd as work progresses.

Work even in sc on 80 sts until work measures 8½" (21.5 cm) from beg. Do not fasten off.

Heel Opening

Fold toe flat. Work sc to next fold and place marker. Work 44 Fsc, skip 40 sc, sc in next 40 sc—84 sts.

Next Rnd: Sc in each Fsc and each sc around—84 sc.



Work in continuous rnds on 84 sts for 6 rnds, sl st in next st.

Cuff

Rnds 1 and 2: Ch 3 (counts as dc, here and throughout), dc in each st around —84 dc. Join with sl st in top of beg ch-3. Do not turn.

Rnd 3: Ch 3, dc in next 2 sts, [ch 5, sc around post of dc 2 rows below and 5 sts over, turn, ch 1, 5 sc in ch-sp, turn, dc in next 5 dc, ch 5, sc around post of dc 2 rows below and 5 sts back (so there are 4 sts between the scs 2 rows below), turn, ch 1, 5 sc in ch-sp, dc in next 9 dc] 6 times ending last rep with dc in next 6 dc. Join with sl st in top of beg ch-3. Do not turn.

Rnd 4: Ch 3, dc in next 10 dc, ch 5, sc around post of dc 2 rows below and 1 st over, sc around post of next dc in same row below, ch 5, skip 2 dc, [dc in next

11 dc, ch 5, sc around post of dc 2 rows below and 1 st over, sc around post of next dc in same row below, ch 5, skip 2 dc] 5 times. Join with sl st in top of beg ch-3. Do not turn.

Rnd 5: Ch 3, dc in next dc, [ch 5, sl st in ch on Rnd 3, sl st in sc, ch 1, turn, 5 sc in ch-sp, dc in next 7 dc] 12 times, ending last rep with dc in next 5 dc. Join with sl st in top of beg ch-3. Do not turn.

Rnd 6: Ch 3, dc in next 10 dc, FPtr around dc under the chain 2 rows below, dc in next dc, ch 5, sc around dc 2 rows below and sc around post of next dc in same row below, ch 5, dc in next dc, FPtr around dc under the chain 2 rows below, [dc in next 11 dc, FPtr around dc under the chain 2 rows below, dc in next dc, ch 5, sc around dc 2 rows below and sc around post of next dc in same row below, ch 5, dc in next dc, FPtr around dc under the chain 2 rows below] 5 times. Join with sl st in top of beg ch-3.

Rnd 7: Ch 3, dc in next 2 sts, [*ch 5, (sl st in ch, sl st in sc) of ch below, turn, ch 1, 5 sc in ch-sp*, dc in next 5 sts; rep bet *s once, dc in next 9 sts] 6 times, ending last rep with dc in next 6 sts. Join with sl st in top of beg ch-3.

Rnd 8: Ch 3, dc in next 11 sts, *yo 2 times, insert hook under post st 2 rows below, draw up loop, yo, draw through 2 loops, yo, insert hook in both ch-5 sps, draw up loop, yo, draw through 2 loops, yo, insert hook under post st, draw up loop, yo, draw through 2 loops, yo, draw through 3 loops, [yo, draw through 2 loops] 2 times, skip 2 sts, dc in next 11 sts; rep from *4 more times, ending last rep with dc in next st. Join with sl st in top of beg ch-3.



Rnd 9: Ch 3, dc in next 2 dc, [ch 5, skip 1st ch-sp 2 rows below, sl st in next ch-sp, sl st in sc, turn, ch 1, 5 sc in ch-sp, dc in next 5 sts, ch 5, sl st in skipped ch-sp, sl st in sc, turn, ch 1, 5 sc in ch-sp, dc in next 9 sts] 6 times, ending last rep with dc in next 6 sts. Join with sl st in top of beg ch-3.

Rnd 10: Ch 3, dc in next 11 sts, [ch 5, sc around skipped st 2 rows below, ch 5, dc in next 134 sts] 6 times, ending last rep with dc in next st. Join with sl st to top of beg ch-3.

Rep Rnds 5–10 for desired cuff length. Do not fasten off.

Cuff Ribbing

Rnd 1: Ch 3, dc in each st around—72 st. Join with sl st to top of beg ch-3. Do not turn.

Rnd 2: Ch 2, [FPdc, BPdc] around to last st, FPdc. Join with sl st in top of beg ch-2.

Rep Rnd 2 until ribbing measures 1" (2.5 cm) or desired length. Fasten off.

Heel

Rnd 1: Attach yarn at base of first Fsc in heel opening. Sc in each of 40 skipped sc, sc2tog in base of next 2 Fsc, pm, sc in base of next 40 fsc, sc2tog in base of next 2 fsc, pm—82 sc with 40 sts between markers on each side.

Rnd 2: *Sc in each sc across to 2 sts before next marker, sc2tog, sc in marked sc, sc2tog; repeat from *.

Rep Rnd 2 until there are only 34 sc remaining. Fasten off leaving a long tail for sewing.

Finishing

Turn sock inside out and whipstitch heel opening closed. Weave in ends.



Stone Path Hat

design by Lisa Naskrent

Originally published in *Interweave Crochet*, Winter 2007



Kathryn Martin

Whether your winter time is spent trekking along the timberland trails or strolling along the boulevard, this beautifully cabled hat will keep you warm and fashionable.

Finished Size: 18½ (19, 20, 21, 22)" head circumference. Choose size that is ½–2" smaller than actual head circumference. Length: 6½–7 (7–7½, 7½–7¾, 7½–8, 8–8½)". Hat shown is size 20".

Yarn: Schoeller Stahl Baby Micro (#1 Super Fine) (51% virgin wool, 49% acrylic; 107 yd [97.5 m]/¾ oz [25 g];): #01 white, 3 (3, 4, 4, 4) balls. Yarn distributed by Skacel.

Hook: Size E/4 (3.5 mm). Adjust hook size if necessary to obtain the correct gauge.

Notions: Yarn needle.

Gauge: 22 sts and 21 rows = 4" in main body patt.

Skill Level: Experienced.

NOTES

Hat is worked in rnds from top down. The brim is optional and is added at the end. When working around FPtr sts of cable, pry sts apart as the latter two may be "buried" beneath. The term "post st(s)," refers to both FPdc and FPtr. In first rnd of brim, because all post sts are worked around posts of sc, pay attention to placement of non-post sts.

Stitch Guide: (See stitch diagram)

Front post double crochet (FPdc): Yo, insert hook from front to back to front around post of st indicated and pull up a lp, [yo, draw through first 2 lps on hook] twice.

Front post treble crochet (FPtr): Yo twice, insert hook from front to back to front around post of st indicated and pull up a lp, [yo, draw through 2 lps on hook] 3 times.

Cable (uses posts of next 4 sts): Sk next 2 sts, FPtr around next 2 sts, working in front of both FPtr just made, FPtr around first skipped st, FPtr around 2nd skipped st.

Popcorn (pc): Work 5 sc in st indicated, drop lp from hook, insert hook in top of first sc, pick up dropped lp and pull through lp on hook, ch 1 to close.

Adjustable ring: Place slipknot on hook, leaving 4" tail. Wrap tail around your fingers to form a ring. Work sts of first rnd into ring. At end of first rnd, pull tail to tighten ring.

Main body pattern: (multiple of 34 [35, 37, 38, 40] sts)

Rnd 1: Ch 1, FPdc around first FPdc, *cable, FPdc around next FPdc, **sc in next 3 sc, cable, sc in next 3 sc**, pc in next sc; rep from ** to ** once, FPdc around next FPdc, cable, FPdc around next FPdc, sc in next 1 (2, 4, 5, 7) sc, FPdc around next FPdc; rep from * twice more omitting last FPdc of 2nd rep, sl st in top of first FPdc to join—12 cables, 12 FPdc, 3 pc, 39 (42, 48, 51, 57) sc.

Rnd 2: Ch 1, FPdc around first 6 post sts, *sc in next 2 sc, sk next sc, FPdc around next 2 FPtr, sc in top of same FPtr (last FPtr that FPdc was made around, here and throughout), sc in top of next FPtr, FPdc around same FPtr (same FPtr that last sc was made in, here and throughout), FPdc around next FPtr, sk next sc, sc in next 2 sc**, sc in next pc, rep from * to ** once, FPdc around next 6 post sts, sc in next 1 (2, 4, 5, 7) sc, FPdc around next 6 post sts; rep from * twice omitting last 6 FPdc of 2nd rep, sl st in top of first FPdc to join—60 FPdc, 42 (45, 51, 54, 60) sc.

Rnd 3: Ch 1, FPdc around first FPdc, *cable, FPdc around next FPdc, **sc in next sc, sk next sc, FPdc around next 2 FPdc, sc in top of same FPdc, sc in next 2 sc, sc in top of next FPdc, FPdc around same FPdc, FPdc around next FPdc, sk next sc, sc in next sc**, pc in next sc, rep from ** to ** once, FPdc around next FPdc, cable, FPdc around next FPdc, sc in next 1 (2, 4, 5, 7) sc, FPdc around next FPdc; rep from * twice omitting last FPdc of 2nd rep, sl st in top of first FPdc to join—6 cables, 36 FPdc, 3 pc, 39 (42, 48, 51, 57) sc.

Rnd 4: Ch 1, FPdc around first 6 post sts, *sc in next sc, FPdc around next 2 FPdc, sc in next 4 sc, FPdc around next 2 FPdc, sc in next sc**, sc in next pc; rep from * to ** once, FPdc around next 6 post sts, sc in next 1 (2, 4, 5, 7) sc, FPdc around next 6 post sts; rep from * twice omitting last 6 FPdc of 2nd rep, sl st in top of first FPdc to join—60 FPdc, 42 (45, 51, 54, 60) sc.

Rnd 5: Ch 1, FPdc around first FPdc, *cable, FPdc around next FPdc, **sc in next sc, sc in top of next FPdc, FPdc around same FPdc, FPdc around next FPdc, sk next sc, sc in next 2 sc, sk next sc, FPdc around next 2 FPdc, sc in top of same FPdc, sc in next sc**, pc in next sc; rep from ** to ** once, FPdc around next FPdc, cable, FPdc around next FPdc, sc in next 1 (2, 4, 5, 7) sc, FPdc around next FPdc; rep from * twice omitting last FPdc of 2nd rep, sl st in top of first FPdc to join—6 cables, 36 FPdc, 3 pc, 39 (42, 48, 51, 57) sc.

Rnd 6: Ch 1, FPdc around first 6 post sts, *sc in next 2 sc, sc in top of next FPdc, FPdc around same FPdc, FPdc around next FPdc, sk next 2 sc, FPdc around next 2 FPdc, sc in top of same FPdc, sc in next 2 sc**, sc in next pc; rep from * to ** once, FPdc around next 6 post sts, sc in next 1 (2, 4, 5, 7) sc, FPdc around next 6 post sts, rep from * twice omitting last 6 FPdc

of 2nd rep, sl st in top of first FPdc to join—60 FPdc, 42 (45, 51, 54, 60) sc.

Rep Rnds 1–6 for patt.

Hat

Beg at crown with an adjustable ring (see Stitch Guide).

Rnd 1: (RS) 12 hdc in adjustable ring, sl st in first hdc to join, tighten ring—12 hdc.

Rnd 2: Ch 1, *FPdc (see Stitch Guide) around first hdc, working behind FPdc just made, sc in top of same hdc; rep from * in each hdc around, sl st in top of first FPdc to join—12 FPdc, 12 sc.

Rnd 3: Ch 1, FPdc around first FPdc, [2 sc in next sc, FPdc around next FPdc] 3 times, sc in next sc, *FPdc around next FPdc, [2 sc in next sc, FPdc around next FPdc] 3 times, sc in next sc; rep from * once, sl st in top of first FPdc to join—12 FPdc, 21 sc.

Rnd 4: Ch 1, 2 FPdc around first FPdc, [sc in next 2 sc, 2 FPdc around next FPdc] 3 times, sc in next sc, *2 FPdc around next FPdc, [sc in next 2 sc, 2 FPdc around next FPdc] 3 times, sc in next sc; rep from * once, sl st in top of first FPdc to join—24 FPdc, 21 sc.

Rnd 5: Ch 1, FPdc around each FPdc and sc in each sc around, sl st in top of first FPdc to join.

Rnd 6: Ch 1, FPdc around first 2 FPdc, *[2 sc in next sc, sc in next sc, FPdc around next 2 FPdc] 3 times, sc in next sc**, FPdc around next 2 FPdc; rep from * once more, then rep from * to **, sl st in top of first FPdc to join—24 FPdc, 30 sc.

Rnd 7: Ch 1, FPdc around first 2 FPdc, *sc in next 3 sc, FPdc around next 2 FPdc, sc in next sc, 3 sc in next sc, sc in next sc, FPdc around next 2 FPdc, sc in next 3 sc, FPdc around next 2 FPdc, sc in next sc**, FPdc around next 2 FPdc; rep from * once more, then rep from * to **, sl st in top of first FPdc to join—24 FPdc, 36 sc.

Rnd 8: Ch 1, FPdc around first FPdc, *2 FPdc around next FPdc, sc in next 3 sc, FPdc around next FPdc, 2 FPdc around next FPdc, sc in next 2 sc, [sc in next 3 sc, FPdc around next FPdc, 2 FPdc around next FPdc] twice, sc in next sc**, FPdc around next FPdc; rep from * once more, then rep from * to **, sl st in top of first FPdc to join—36 FPdc, 36 sc.

Rnd 9: Ch 1, FPdc around first 3 FPdc, *sc in next 3 sc, FPdc around next 3 FPdc, 2 sc in next sc, sc in next 3 sc, 2 sc in next sc, FPdc around next 3 FPdc, sc in next 3 sc, FPdc around next 3 FPdc, sc in next sc**, FPdc around next 3 FPdc; rep from * once more, then rep from * to **, sl st in top of first FPdc to join—36 FPdc, 42 sc.

Rnd 10: Ch 1, FPdc around first FPdc, *2 FPdc around next FPdc, FPdc around next FPdc, sc in next 3 sc, FPdc around next FPdc, 2 FPdc around next FPdc, FPdc around next FPdc, sc in next 4 sc, [sc in next 3 sc, FPdc around next FPdc, 2 FPdc around next FPdc, FPdc around next FPdc] twice, 1 (2, 2, 2) sc in next sc**,

FPdc around next FPdc; rep from * once more, then rep from * to **, sl st in top of first FPdc to join— 48 FPdc, 42 (45, 45, 45, 45) sc.

Rnd 11: Ch 1, FPdc around first FPdc, *[2 FPdc around next FPdc] twice, FPdc around next FPdc, sc in next 3 sc, FPdc around next 4 FPdc, sc in next 7 sc, FPdc around next 4 FPdc, sc in next 3 sc, FPdc around next FPdc, [2 FPdc around next FPdc] twice, FPdc around next FPdc, sc in next 1 (2, 2, 2, 2) sc**, FPdc around next FPdc; rep from * once more, then rep from * to **, sl st in top of first FPdc to join—60 FPdc, 42 (45, 45, 45, 45) sc.

Sizes 20 (21, 22)" only:

Rnd 12: Ch 1, FPdc around first 6 FPdc, *sc in next 3 sc, FPdc around next 4 FPdc, sc in next 4 sc, [sc in next 3 sc, FPdc around next 4 FPdc] twice, FPdc around next 2 FPdc, [2 sc in next sc] twice**, FPdc around next 6 FPdc; rep from * once more, then rep from * to **, sl st in top of first FPdc to join—60 FPdc, 51 sc.

Sizes 21 (22)" only:

Rnd 13: Ch 1, FPdc around first 6 FPdc, *sc in next 3 sc, FPdc around next 4 FPdc, sc in next 4 sc, [sc in next 3 sc, FPdc around next 4 FPdc] twice, FPdc around next 2 FPdc, work 1 (2) sc in next sc, sc in next 2 sc, work 2 (3) sc in next sc**, FPdc around next 6 FPdc; rep from * once more, then rep from * to **, sl st in top of first FPdc to join—60 FPdc, 54 (60) sc.

All sizes: Rep Rows 1–6 of main body patt (see Stitch Guide)

until hat measures desired length minus ½" before brim fold, measure for length along string of popcorns. End on any rnd.

Next rnd: Ch 1, sc in each st around, sl st flo (see below) in first sc on last rnd to join, turn. Rep last rnd 2 more times—102 (105, 111, 114, 120) sc. Do not fasten off unless omitting brim.

Brim: (Optional)

Rnd 1 (brim fold rnd): (WS) Ch 1, sc blo in each sc around; sl st in top of first sc to join—102 (105, 111, 114, 120) sc.

Rnds 2–3: Ch 1, sc around, sl st in top of first sc to join.

Rnds 4–10: Sl st in next 2 (3, 5, 6, 8) sts (maintain alignment with FPdc from hat). Work Rnds 1–6 of main body patt, then Rnd 1 once more. Work all post sts of first rnd around posts of sc.

Rnd 11: Ch 1, sc around, sl st blo in first sc to join—102 (105, 111, 114, 120) sc.

Rnd 12: Sl st blo around, sl st in first sl st to join—102 (105, 111, 114, 120) sl sts. Fasten off.

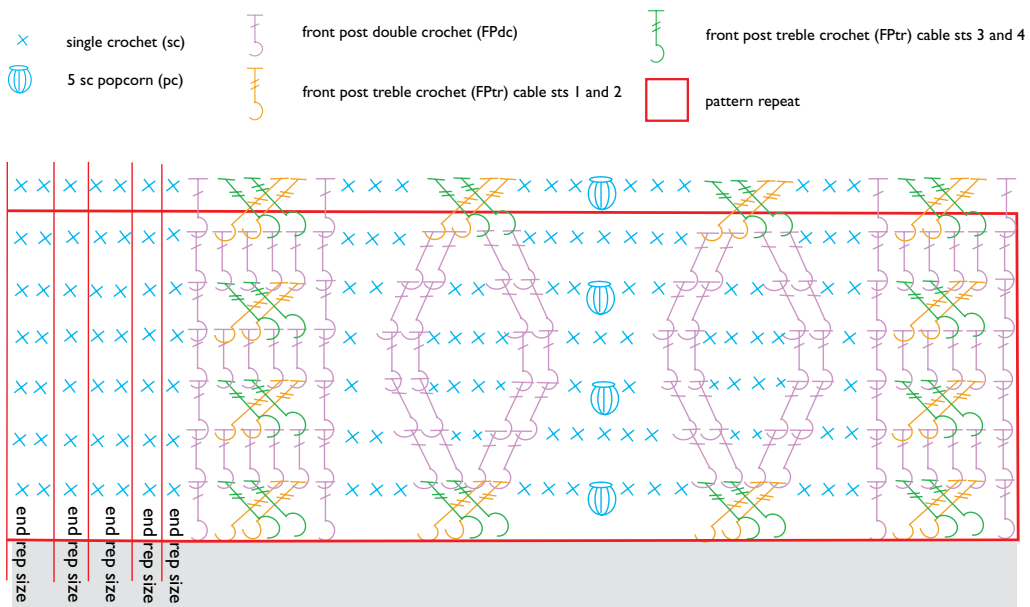
Finishing

Weave in loose ends. Fold up brim. ☐

LISA NASKRENT is captivated by class, allure, and beauty. She firmly believes that where there is a will, there is a way to design it. You can see more of her work at www.crochetgarden.com.

Slip Stitch Crochet (sl st)

Insert hook into stitch, yarn over hook and draw loop through stitch and loop on hook.

Rep 34 (35, 37, 38, 40) sts inside rep frame 3 times.
Rep Rnds 1–6 as necessary according to text instructions.


BIG THOMPSON VEST

● ● ● ○ SHANNON MULLETT-BOWLSBY

INSPIRED BY HIKING VESTS THAT HE HAS WORN (AND WORN OUT), Shannon Mullett-Bowlsby combines long cables and side-to-side ribbing at hem and collar to create a sturdy vest with masculine lines. The convenient zip-front closure makes this a versatile layer for casual or outdoor wear.

GETTING STARTED

FINISHED SIZE 34 (38, 42, 46)" chest circumference, intended to be worn with 2" ease. Garment shown measures 42".

YARN Plymouth Yarn Taria Tweed (40% merino, 30% llama, 30% silk; 135 yd [123 m]/3½ oz [100 g]; ): #2759, 6 (7, 7, 8) skeins.

HOOK Size 1/9 (5.5 mm). Adjust hook size if necessary to obtain correct gauge.

NOTIONS Yarn needle; sewing needle; matching thread; dual separating zipper.

GAUGE 10 sts and 6 rows = 4" in patt st.



Notes

Wet-block all pieces before sewing tog. Steam-block after final construction.

Baste zipper in place before sewing it in.

A grafting st is used on all seams during assembly.

Stitch Guide

Cable Cross (worked over 4 sts): Sk next 2 sts, FPtr (see Glossary) around each of the next 2 sts, working in front of sts just made, FPtr around first skipped st, FPtr around 2nd skipped st.

Ribbing

Row 1: Work required number of fhdc (see Glossary), turn.

Row 2: Ch 2, FPhdc (see Glossary) around first st and around each st across, turn.

Rep Row 2 for ribbing.

Grafting st (seam): With RS tog, insert hook in flo of piece facing and blo of adjacent piece, yo and pull up lp, yo and draw through both lps on hook; cont along entire seam. Fasten off at end of seam.

Back armhole dec: Sl st in first st, work in patt as est to last st, turn leaving last st unworked.

Left-front armhole dec: When RS is facing, sl st in first st, work in patt as est to end. When WS is facing, work in patt as est to last st, turn leaving last st unworked.

Right-front armhole dec: When RS is facing, work in patt as est to last st of row, turn leaving last st unworked. When WS is facing, sl st in first st, work in est patt to end.

Cable Patt

Fhdc 26 for gauge swatch.

Row 1: Ch 1, dc across, turn.

Row 2: Ch 1, dc in first 2 dc, [BPdc (see Glossary) around next 4 dc, dc in next 5 dc] 2 times, BPdc around next 4 dc, dc in next 2 dc, turn.

Row 3: Ch 1, dc in first 2 dc, [cable cross (see Stitch Guide), dc in next 5 dc] 2 times, cable cross, dc in next 2 dc, turn.

Row 4: Ch 1, dc in next 2 dc, BPdc around next 4 post sts, [dc in next 5 dc, BPdc around next 4 post sts] 2 times, dc in next 2 dc, turn.

Row 5: Ch 1, dc in first 2 dc, FPdc (see Glossary) around next 4 post sts, [dc in next 5 dc, FPdc around next 4 post sts] 2 times, dc in next 2 dc, turn.

Rows 6–7: Rep Rows 4–5.

Row 8: Rep Row 4.

Rows 9–10: Rep Rows 3–4.

Row 11: Ch 1, hdc across. Fasten off.

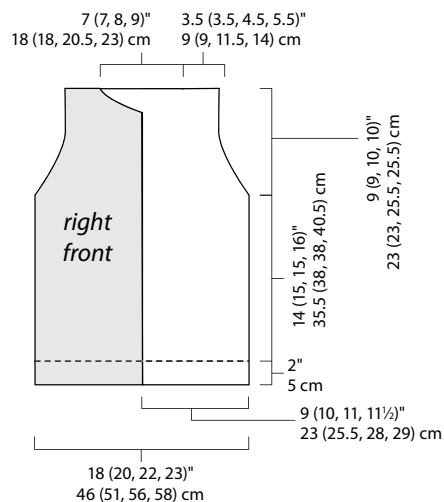
Back

Ribbing: Fhdc 8 (see Glossary). Work 46 (52, 58, 60) rows of ribbing patt (see Stitch Guide), rotate work 90 degrees and beg working in row-ends.

Row 1: Ch 1 (does not count as st throughout), hdc in each row-end across, turn—46 (52, 58, 60) hdc.

Row 2: (RS) Ch 1, dc across, turn.

Row 3: Ch 1, dc in first 3 (3, 3, 4) dc, BPdc (see Glossary) around next 4 dc, [dc in next 2 (3, 4, 4) dc, BPdc around





next 4 dc] 6 times, dc in next 3 (3, 3, 4) dc, turn.

Row 4: Ch 1, dc in first 3 (3, 3, 4) dc, cable cross (see Stitch Guide), [dc in next 2 (3, 4, 4) dc, cable cross] 6 times, dc in next 3 (3, 3, 4) dc, turn.

Row 5: Ch 1, dc in first 3 (3, 3, 4) dc, BPdc around next 4 post sts, [dc in next 2 (3, 4, 4) dc, BPdc around next 4 post sts] 6 times, dc in next 3 (3, 3, 4) dc, turn.

Row 6: Ch 1, dc in first 3 (3, 3, 4) dc, FPdc around next 4 post sts, [dc in next 2 (3, 4, 4) dc, FPdc around next 4 post sts] 6 times, dc in next 3 (3, 3, 4) dc, turn.

Rows 7–8: Rep Rows 5–6.

Row 9: Rep Row 5.

Size 34" only:

Rows 10–22: Rep Rows 4–9 of patt 2 times, then rep Row 4.

Rows 23–29: Work back armhole dec (see Stitch Guide)—32 sts.

Sizes 38 (42)" only:

Rows 10–23: Rep Rows 4–9 of patt 2 times, then rep Rows 4–5.

Rows 24–29: Work back armhole dec (see Stitch Guide)—40 (46) sts.

Size 46" only:

Rows 10–24: Rep Rows 4–9 of patt

2 times, then rep Rows 4–6.

Rows 25–29: Work back armhole dec (see Stitch Guide)—50 sts.

All sizes:

Rows 30–37: Work in patt.

Row 38: Ch 1, sc across. Fasten off.

Left Front

Fhdc 8. Work 23 (26, 29, 30) rows of ribbing patt. Rotate work 90 degrees and beg working in row-ends.

Row 1: Ch 1, hdc in each row-end across, turn—23 (26, 29, 30) hdc.

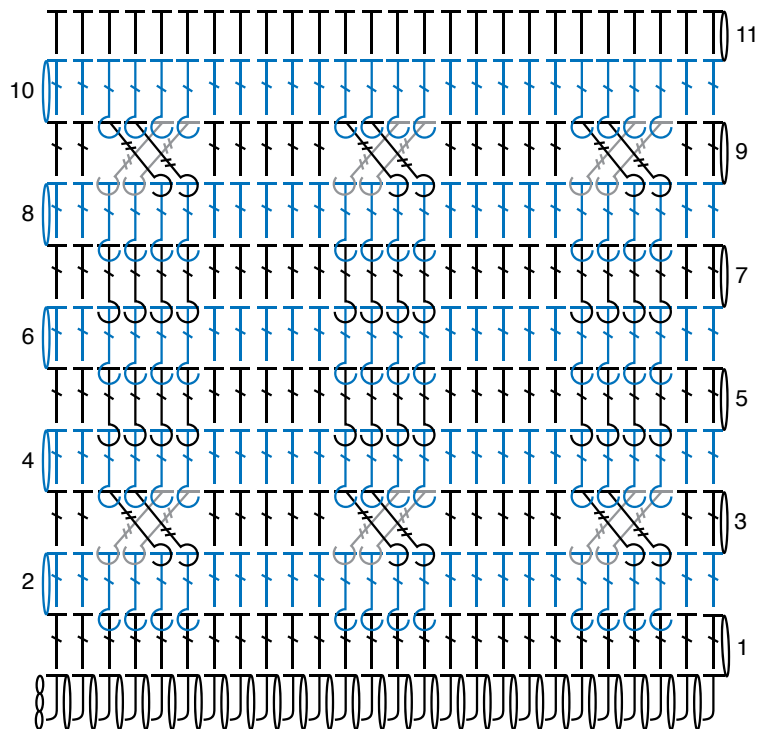
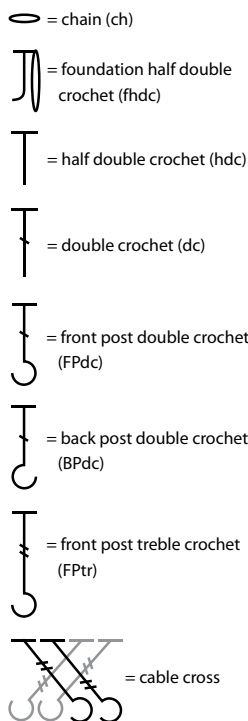
Row 2: (RS) Ch 1, dc across, turn.

Row 3: Ch 1, dc in next 2 dc, BPdc around next 4 dc, [dc in next 3 (2, 3, 3) dc, BPdc around next 4 dc] 2 (3, 3) times, dc in next 3 (2, 2, 3) dc, turn.

Row 4: Ch 1, dc in next 3 (2, 2, 3) dc, cable cross, [dc in next 3 (2, 3, 3) dc, cable cross] 2 (3, 3, 3) times, dc in next 2 dc, turn.

Row 5: Ch 1, dc in next 2 dc, BPdc around next 4 post sts, [dc in next 3 (2, 3, 3) dc, BPdc around next 4 post sts] 2 (3, 3, 3) times, dc in next 3 (2, 3, 3) dc, turn.

Row 6: Ch 1, dc in next 3 (2, 2, 3) dc, FPdc around next 4 post sts, [dc in next 3



GAUGE SWATCH PATTERN

(2, 2, 3) dc, FPdc around next 4 post sts] 2 (3, 3, 3) times, dc in next 2 dc, turn.

Rows 7–8: Rep Rows 5–6.

Row 9: Rep Row 5.

Size 34" only:

Rows 10–22: Rep Rows 4–9 of patt 2 times, then rep Row 4.

Rows 23–29: Work left-front armhole dec (see Stitch Guide)—16 sts.

Sizes 38 (42)" only:

Rows 10–23: Rep Rows 4–9 of patt 2 times, then rep Rows 4–5.

Rows 24–29: Work left-front armhole dec (see Stitch Guide)—20 (23) sts.

Size 46" only:

Rows 10–24: Rep Rows 4–9 of patt 2 times, then rep Rows 4–6.

Rows 25–29: Work left-front armhole dec (see Stitch Guide)—25 sts.

All sizes:

Rows 30–33: Work even in patt. **Shape neckline:** **Note:** When dec occurs within a cable cross, sk the appropriate number of sts needed and complete cable cross as directed.

Row 34: Work in patt to last 3 sts, hdc in next st, sc in next st, turn leaving last st unworked—15 (19, 22, 24) sts.

Row 35: Sl st in first 3 sts, sc in next st, hdc in next st, work in patt to end—12 (16, 19, 21) sts.

Rows 36–37: Rep Rows 34–35—8 (12, 15, 17) sts.

Row 38: Ch 1, sc across. Fasten off.

Right Front

Work as for left front through Row 9.

Size 34" only:

Rows 10–22: Rep Rows 4–9 of patt 2 times, then rep Row 4.

Rows 23–29: Work right-front armhole dec (see Stitch Guide)—16 sts.

Sizes 38 (42)" only:

Rows 10–23: Rep Rows 4–9 of patt 2 times, then rep Rows 4–5.

Rows 24–29: Work right-front armhole dec (see Stitch Guide)—20 (23) sts.

Size 46" only:

Rep Rows 4–9 of patt 2 times, then rep Rows 4–6.

Rows 25–29: Work right-front armhole dec (see Stitch Guide)—25 sts.

All sizes:

Rows 30–33: Work in patt.

Shape neckline:

Row 34: Sl st in first st, sc in next st, hdc in next st, work in patt across, turn—15 (19, 22, 24) sts.

Row 35: Work in patt to last 3 sts, hdc in next st, sc in next st, sl st in last st, turn—12 (16, 19, 21) sts.

Rows 36–37: Rep Rows 34–35—8 (12, 15, 17) sts.

Row 38: Ch 1, sc across. Fasten off.

Collar

Fhdc 10. Work 38 (42, 47, 52) rows of ribbing patt. Fasten off.

Finishing

With RS facing and working along side

seams of pieces and armholes, sc in all row-ends, working 2 sc in each row-end. Leave neckline unworked. Wet-block all pieces (see Notes). Holding RS tog, sew shoulder and side seams using graft st (see Stitch Guide). With RS facing, work sc around neckline. Fasten off. Sew collar to neckline using graft st. Sew in zipper (see Notes). Weave in loose ends. Steam-block to measurements. ⇨

SHANNON MULLETT-BOWLSBY, a retired professional ballroom dancer, lives in Seattle with his partner, Jason, and their three Shiba Inu. They teach classes in small-space edible gardening and food preservation.



Abbreviations

beg	begin(s); beginning
bet	between
blo	back loop only
CC	contrasting color
ch	chain
cm	centimeter(s)
cont	continue(s); continuing
dc	double crochet
dtr	double treble crochet
dec(s)('d)	decrease(s); decreasing; decreased
est	established
fdc	foundation double crochet
flo	front loop only
foll	follows; following
fsc	foundation single crochet
g	gram(s)
hdc	half double crochet
inc(s)('d)	increase(s); increasing; increased
k	knit
lp(s)	loop(s)
MC	main color
m	marker
mm	millimeter(s)
patt(s)	pattern(s)
pm	place marker
p	purl
rem	remain(s); remaining
rep	repeat; repeating
rev sc	reverse single crochet
rnd(s)	round(s)
RS	right side
sc	single crochet
sk	skip
sl	slip
sl st	slip(ped) stitch
sp(s)	space(es)
st(s)	stitch(es)
tch	turning chain
tog	together
tr	treble crochet
WS	wrong side
yd	yard
yo	yarn over hook
*	repeat starting point
()	alternate measurements and/or instructions
[]	work bracketed instructions a specified number of times

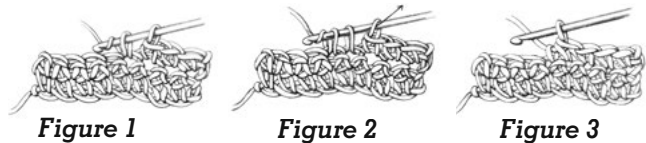
French Knot

Bring needle out of background from back to front, wrap yarn around needle 1 to 3 times and use thumb to hold in place while pulling needle through wraps into background a short distance from where it came out.



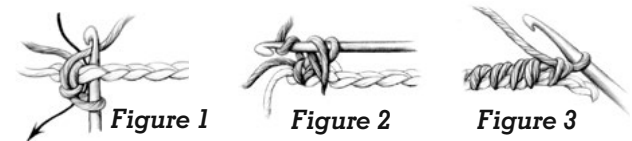
Single Crochet Two Together (sc2tog)

Insert hook in next stitch, yarn over, pull up loop (2 loops on hook, Figure 1), insert hook in next stitch, yarn over, pull up loop (3 loops on hook), yarn over and draw through all 3 loops on hook (Figure 2)—1 stitch increased (Figure 3).



Reverse Single Crochet (rev sc)

Working from left to right, insert crochet hook into an edge stitch and pull up a loop, yarn over and draw this loop through the first one to join. *Insert hook into next stitch to right (Figure 1), pull up a loop, yarn over (Figure 2), and draw through both loops on hook (Figure 3). Repeat from *.

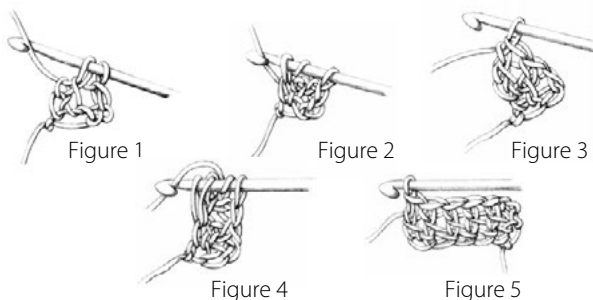


Concentration Ratings:

- 1
2
3
4
LITTLE CONCENTRATION REQUIRED.
 Straightforward stitching means your hands can work on autopilot.
- 1
2
3
4
SOME CONCENTRATION REQUIRED.
 Easily memorized stitch patterns and minimal shaping might require some focus and counting.
- 1
2
3
4
FAIR AMOUNT OF FOCUS REQUIRED.
 Involved stitch patterns, shaping, or assembly require fairly constant concentration.
- 1
2
3
4
EXTREME FOCUS REQUIRED.
 Unusual techniques or complex stitch patterns and shaping require constant focus.

Foundation Double Crochet (fdc)

Chain 3. Yarn over, insert hook in 3rd chain from hook, yarn over and pull up loop (3 loops on hook), yarn over and draw through 1 loop (1 chain made), [yarn over and draw through 2 loops] 2 times (Figure 1)—1 foundation double crochet. Yarn over, insert hook under the 2 loops of the chain at the bottom of the stitch just made, yarn over and pull up loop (3 loops on hook) (Figure 2), yarn over and draw through 1 loop (1 chain made), [yarn over and draw through 2 loops] 2 times (Figure 3). *Yarn over, insert hook under the 2 loops of the chain at the bottom of the stitch just made (Figure 4), yarn over and pull up loop (3 loops on hook), yarn over and draw through 1 loop (1 chain made), [yarn over and draw through 2 loops] 2 times. Repeat from * (Figure 5).



Foundation Half Double Crochet (fhdc)

Ch 3, yarn over, insert hook in 3rd chain from hook, yarn over and pull up loop (3 loops on hook), yarn over and draw through 1 loop (1 chain made), yarn over and draw through all loops on hook—1 foundation half double crochet. *Yarn over, insert hook under the 2 loops of the “chain” stitch of last stitch and pull up loop, yarn over and draw through 1 loop, yarn over and draw through all loops on hook; repeat from * for length of foundation.

Front Post Double Crochet (FPdc)

Yarn over, insert hook from front to back to front around post of corresponding stitch below, yarn over and pull up loop [yarn over, draw through 2 loops on hook] 2 times.



Front Post Half Double Crochet (FPhdc)

Yarn over, insert hook from front to back to front around post of corresponding stitch below, yarn over and pull up loop, yarn over and draw through all loops on hook.

Front Post Treble Crochet (FPtr)

Yarn over 2 times, insert hook from front to back to front around the post of the corresponding stitch below, yarn over and pull up loop [yarn over, draw through 2 loops on hook] 3 times.

Back Post Double Crochet (BPdc)

Yarn over, insert hook from back to front to back around post of corresponding stitch below, yarn over and pull up loop [yarn over, draw through 2 loops on hook] 2 times.



Illustrations by Gayle Ford