

Beautiful Handwoven Blankets:
Free Projects to Make Woven Throws for All Seasons

WEAVING TODAY™

Soft Pillows and a Lacy Blanket

by Rita Hagenbruch

This lacy plaid blanket is woven in a light-weight wool, suitable for cool summer evenings in a porch rocker. A mohair bouclé used as one of the monk's belt pattern wefts for the coordinating pillows makes them soft and fuzzy.



From *Handwoven*, May/June 2008; pp. 34–37.

There is hardly a horizontal surface in my house that does not have a handwoven textile on it. Even the top of the toilet tank is covered with a little halvdräll cloth! I have been weaving for thirty-five years and most of what I create is for our home.

My weaving “studio” is located wherever there is some available space in our three-bedroom ranch-style house. There are two floor looms in my living room—and since they are much prettier for visitors to see “dressed,” I am very motivated to keep them warped!

The project pieces

The instructions on pages 3–4 are for the blanket in huck lace and the two pillows in monk’s belt are shown on page 5. They coordinate with each other by sharing some of the same yarns and col-



Rita uses overshot for coverlets (above) and tablecloths and table runners (below).



Even the top of a toilet tank (below) provides a display area for a cloth in halvdräll.



PHOTOS BY RITA HAGENBRUCH

ors. The blanket is woven entirely in white, blue, and tan Shetland wool. The pillows use the same blue and tan wool as pattern wefts. Designs of squares and

rectangles further tie the pieces together. Shetland wool is available in many colors—choose some that work well in your home!

STEPS FOR WEAVING THE BLANKET

PROJECT at-a-glance

Weave structure for rug

Plain weave and huck lace.

Equipment

4-shaft loom, 60" weaving width; 12-dent reed; 3 shuttles.

Yarns

Warp: 2-ply wool (1,800 yd/lb), White, 1,024 yd;
Cornflower (blue) and Oatmeal, 936 yd each.
Weft: 2-ply wool (1,800 yd/lb), White, 880 yd;
Cornflower and Oatmeal, 847 yd each.

Yarn Sources

2-ply Shetland wool by Harrisville Designs is available from most weaving retailers.

Warp order and length

724 ends 4 yd long following the color order in Figure 2 (allows 8" for take-up, 26" for loom waste; loom waste includes fringe).

Warp and weft spacing

Warp: 12 epi (1/dent in a 12-dent reed). Width in the reed: 60".

Weft: 12 ppi. Woven length (measured under tension on the loom): 110".

Finished Dimensions

After washing, one blanket 56" × 97" plus 5½" fringe at each end.

1 Wind a warp of 724 ends 4 yd long following the color order in Figure 2. If you don't have a 60" wide loom, you can adjust the number of repeats to weave a narrower blanket or throw. (Each repeat is 8" in warp width.) Because this is a wool warp and it is wide, warping back-to-front with two crosses is recommended for smoothest beaming. (For complete warping instructions, see Free Resources at weavingtoday.com.)

2 Make sure you have enough heddles on shafts 1 and 2. Thread the shafts following the draft in Figure 1 and sley the first and last 4 ends 2/dent.

3 Weave a few picks of plain weave in scrap yarn. Allowing 10" for fringe, weave the blanket at 12 ppi following Figures 1 and 4. Hemstitch both ends with Oatmeal, including 3 warp threads and 2 weft threads in each stitch. Take beginning and ending weft tails around an edge warp thread and back into the same shed.

4 Allowing 10" for fringe, cut the fabric from the loom, remove scrap yarn, trim fringe evenly, and prepare a twisted fringe of two groups of 3 ends in each fringe. Soak the blanket in the washing machine, warm water, with Orvus Paste for about 20

1. Draft for blanket

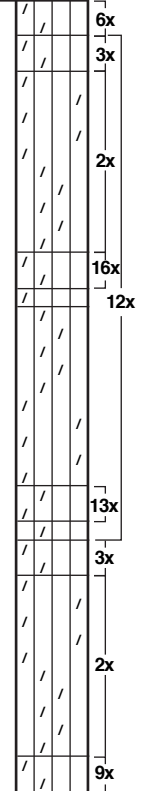
8x				2x				3x				13x				7x				16x				2x				3x				5x							
				3 3				4 4								4 4				3 3								3 3				4 4							
2				2 2 2				2				2				2 2 2				2				2 2 2				2				2 2				2 2			
1				1 1 1				1				1 1 1				1				1 1 1				1				1 1 1				1				1 1			

2. Warp color order

				3x				7x				3x											
234				3 2 2				8 2 2 8				2 2 3				Cornflower							
234				3 2				2 2 16 2				2 2				2 3				Oatmeal			
256				32								32								White			
724																							

3. Heddle count

46		shaft 4
46		shaft 3
316		shaft 2
316		shaft 1
724		



4. Weft color order

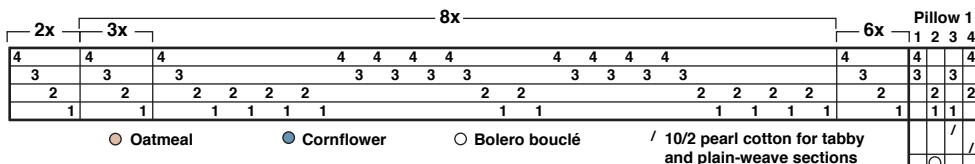
		Cornflower		Oatmeal		White	
2		2		32		3x	
2		2				3x	
8		2					
2		16				12x	
2		2					
8		2					
2		2		32		3x	
2		2				3x	

minutes. Agitate by hand for a few minutes. Spin out water; remove blanket. Refill the machine with warm water, replace the blanket, and agitate again by hand to

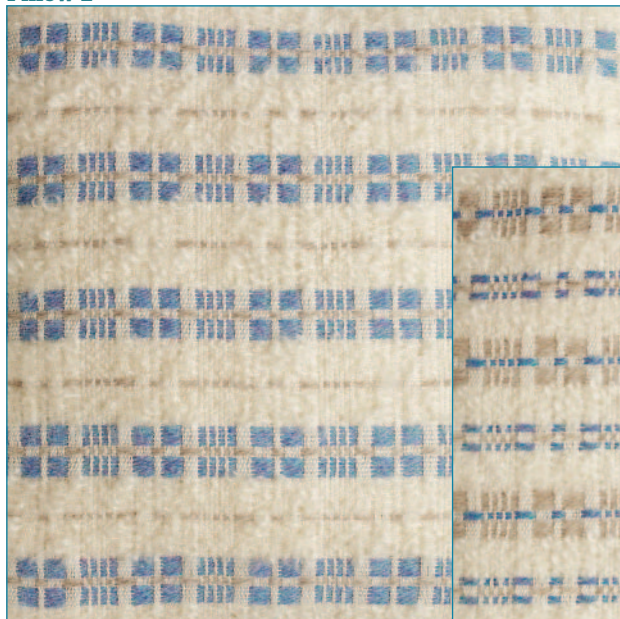
rinse. Spin out the water, remove the blanket, and lay flat to dry. Press with a warm iron.

STEPS FOR WEAVING THE PILLOWS

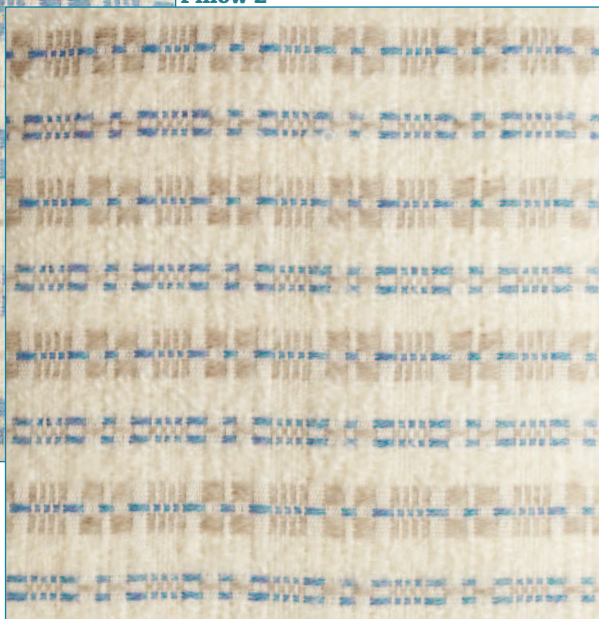
5. Draft for pillows



Pillow 1

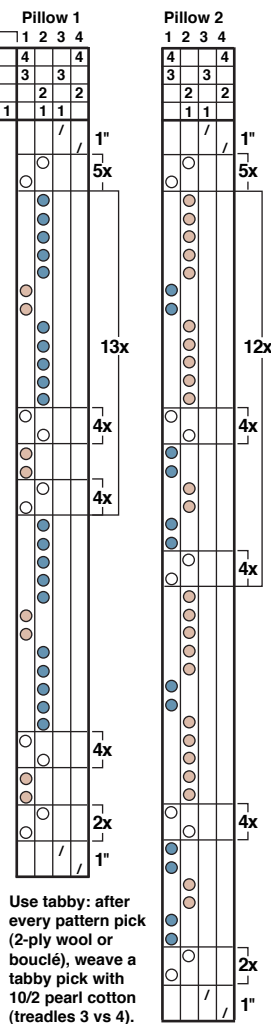


Pillow 2



6. Heddle count

104 shaft 4
104 shaft 3
112 shaft 2
112 shaft 1
432



- 1 Wind a warp of 432 ends of 10/2 pearl cotton 3 yd long. Use your preferred warping method to thread the shafts following Figure 5. Warp length provides two pillows; add 1 yd for each additional pillow.
- 2 Weave Pillow 1 following Figure 5. Begin and end with 1" plain weave using 10/2 pearl cotton. The monk's belt treadling shows the pattern weft only. Use tabby: i.e., after each pattern-weft pick, weave a tabby pick, alternating treadles 3 and 4. Weave Pillow 2 in the same way, again using tabby and beginning and ending with 1" plain weave.

- 3 Cut the fabric from the loom; cut pillows apart; machine zigzag raw edges. Handwash, warm water, with Orvus Paste. Rinse, warm water; dry flat.
- 4 For pillows without a zipper: Fold fabric in half, right sides together with stripes aligned, and stitch around edges with a 1/2" seam allowance leaving one edge open. Insert a 16" pillow form and handsew to close open edge.

- 5 For pillows with a zipper: Sew the zipper to one folded plain-weave edge close to the bouclé but not including it. Fold and sew the other edge to overlap the zipper so the pattern shows on the outside but the plain-weave fabric is next to the zipper. Pin side seams, matching pattern stripes, and sew. Unzip, turn right side out, and insert form.

PROJECT at-a-glance

Weave structure for rug

Monk's belt.

Equipment

4-shaft loom, 18" weaving width; 12-dent reed;
4 shuttles (or 2 shuttles, 4 bobbins).

Yarns

Warp: 10/2 pearl cotton (4,200 yd/lb), natural,
1,296 yd.
Weft: 10/2 pearl cotton (4,200 yd/lb), natural, 550 yd.
2-ply wool (1,800 yd/lb), Cornflower and Oatmeal,
125 yd each; mohair bouclé (980 yd/lb), natural,
249 yd.

Yarn Sources

2-ply Harrisville Shetland wool, 10/2 pearl cotton, and

Bolero mohair bouclé by Henry's Attic are available
from most weaving retailers.

Warp order and length

432 ends 3 yd long (allows 7" for take-up and 32" for
loom waste).

Warp and weft spacing

Warp: 24 epi (2/dent in a 12-dent reed). Width in the
reed: 18".
Weft: 28 ppi (14 ppi plain weave, 14 ppi tabby). Woven
length (measured under tension on the loom): 34"
each pillow.

Finished Dimensions

Amounts produce two pillows 16" × 16" each.

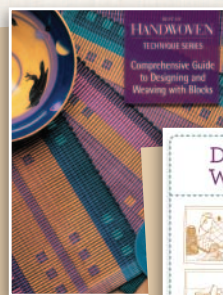
HANDWOVEN[®]



New *Handwoven* Collection CDs
Available Now!

WEAVING TODAY[®]
shop.weavingtoday.com

BEST OF HANDWOVEN[®] eBooks



Designing and
Weaving with Blocks



A Baker's Dozen
13 Handwoven Bags



Designing to Weave & Sew

THESE DOWNLOADABLE COLLECTIONS
AND MANY MORE ARE AVAILABLE NOW!

WEAVING TODAY[®]
shop.weavingtoday.com

866-949-1646

A Twill Color Gamp Doubles as a Cozy Studio Nap Blanket

by Robyn Spady



From *Handwoven*, November/December 2008; pp. 40-42.

Weavers love gamps! This project is really two gamps in one: a twill gamp and a color gamp. Five twills are used with five warm hues to create twenty-five color and pattern combinations. You'll love this soft, smooth yarn, and you'll get new weaving ideas every time you wrap your blanket around you. Although it is designed for a floor loom with a 40" weaving width, the blanket can be woven in two or more panels on a smaller loom.

A gamp consists of equal-sized (or nearly equal-sized) sections in the warp of different colors or threading orders (such as a variety of twills) combined with the same-sized sections of different colors or treadling orders in the weft.

Color gamps are usually woven in plain weave and are intended to show the blends created by mixing different warp and weft colors. Twill gamps reveal how each twill looks treadled as drawn in (this means the treadling order is the same as the threading order) and also how each twill

looks using the treadling order of each of the other twills. If each section of a twill gamp is threaded and treadled in a different color, twill gamps also show a variety of color blends and contrasts. The colors in this blanket are inspired by one of *Handwoven's* Fabric Forecasts, and some of the twill drafts are inspired by twills in Janet Phillips's new book; (see Resources).

To weave a narrower blanket or to weave it in more than one panel, end the threading after any 4-thread turquoise stripe.

Resources

- Lancaster, Daryl. "Handwoven's Fabric Forecast, Fall/Winter '05-'06: Eccentric and Assertive." *Handwoven*, January/February, 2005, p. 74.
- Phillips, Janet. *Designing Woven Fabrics*. United Kingdom: Natural Time Out Publications, 2008.

PROJECT at-a-glance

Weave structure for rug

2/2 twill.

Equipment

4-shaft loom, 39" weaving width; 12-dent reed;
1-2 shuttles, 6 bobbins.

Yarns

Warp: 80% cotton/20% merino wool (987 yd/lb, 215 yd/100 g skein, Cotton Fleece, Halcyon Yarn),
turquoise #060, 107 yd; plum #002, 235 yd; dark red #025, 256 yd; red #026, 261 yd; orange #030, 251 yd; gold #059, 136 yd.

Weft: Cotton Fleece, turquoise #060, 67 yd; plum #002,

115 yd; dark red #025, 229 yd; red #026, 234 yd;
orange #030, 112 yd; gold #059, 61 yd.

Warp length

467 ends (includes 2 floating selvages) 2²/₃ yd long
(allows 4" for take-up, 33" for loom waste; loom waste includes fringe).

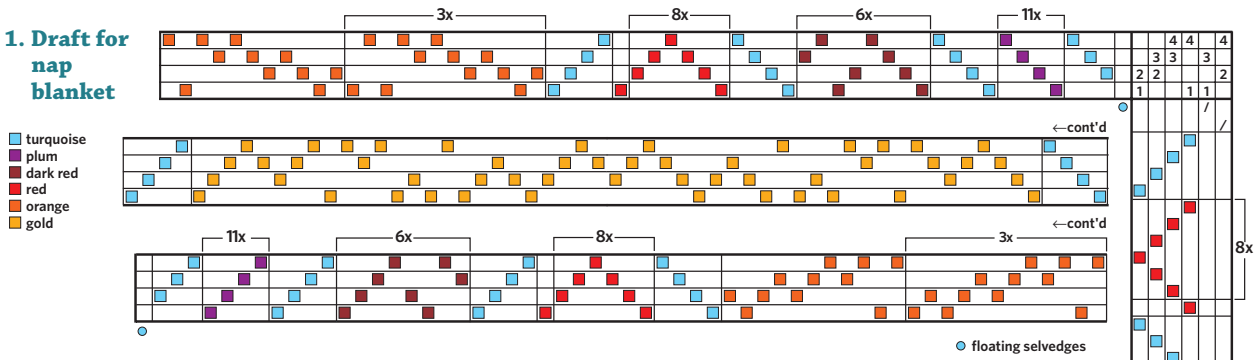
Stetts

Warp: 12 epi (1/dent in a 12-dent reed). Weft: 11-12 ppi.

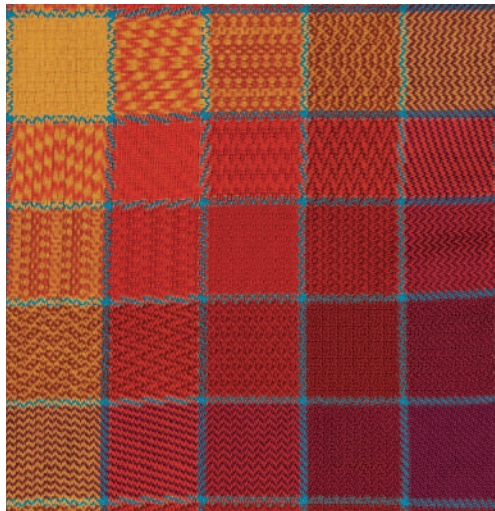
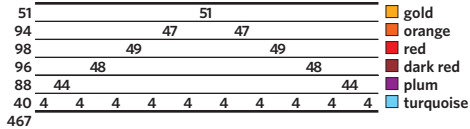
Finished Dimensions

Width in the reed: 39". Woven length: 59". Finished size: 33½" × 54½" plus 4" fringe.

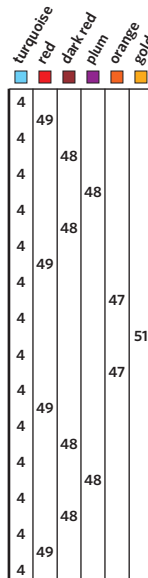
1. Draft for nap blanket



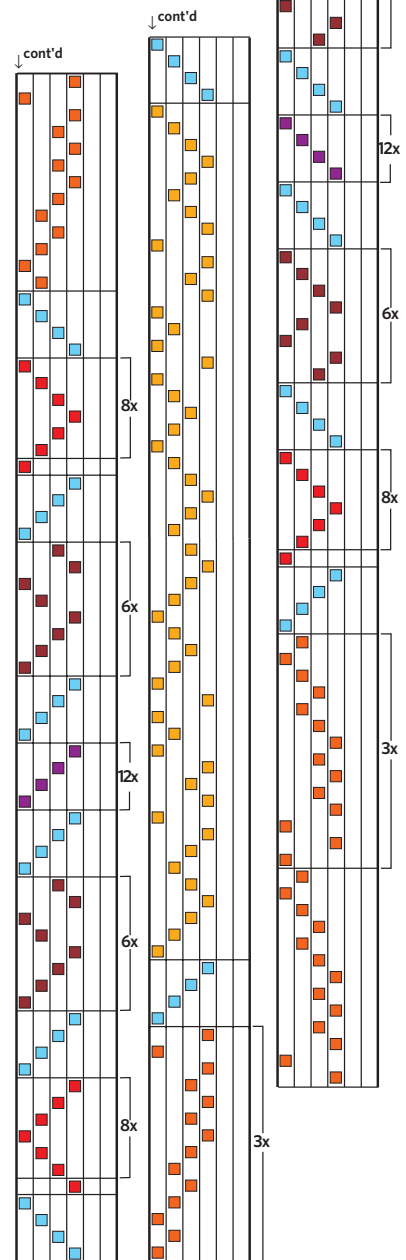
2. Warp color order




3. Weft color order



TIP: To end one weft color or start another, place the old weft in its last shed or the new weft in its first, leaving a 2–3" tail. With the shed still open, unply the tail and pull one of the plies back through the shed and out between warp threads about 1/2" from the selvage. Take the other ply around the floating selvage, into the shed, and then out a few warp threads past the tail of the first ply.



- 1** Wind a warp of 467 ends $2\frac{2}{3}$ yd long following Figure 2 and thread the loom following the draft in Figure 1. Weave a header in scrap yarn (shafts 1-3 vs 2-4; note that true plain weave is not possible on some of the twill threadings).
- 2** Allowing 8" for fringe, weave the first 4 picks using turquoise weft. Hemstitch over the first 2 picks, including 4 warp threads in each stitch (when a colored section does not divide evenly into 4, distribute the extra ends in adjacent stitches so that the 4 turquoise ends are always included in one stitch).
- 3** Continue weaving the blanket following Figures 1 and 3. Aim for a beat of 12 ppi—you'll have to adjust your beat for some of the sequences to maintain this weft sett since some of the twills provide longer floats than others and therefore require a slightly gentler beat. Follow the Tip above for beginning and ending each new weft color. Hemstitch over the last 2 picks as at the beginning.
- 4** Again allowing 8" for fringe, remove the fabric from the loom and prepare a tight twisted fringe, including the same ends in each fringe as in the hemstitching, and secure each with an overhand knot. Trim off all weft tails.
- 5** Wash the blanket by hand in cool water with two tablespoons of Synthrapol to stabilize dye color (or follow the washing instructions provided on the Cotton Fleece yarn label). Rinse the blanket thoroughly. Squeeze out excess water (do not twist or wring), roll in towels to remove even more water, and lay flat to dry. When the blanket is completely dry, tumble in a dryer on low for about five minutes. Press lightly with a warm iron if desired. 



The image features a magazine cover for 'HANDWOVEN' on the left, set against a background of various colorful woven fabrics. The magazine cover includes the title 'HANDWOVEN', the subtitle 'Say it with CLOTH', and a list of '10 SPECIAL PROJECTS' such as 'Celebrate', 'Communicate', and 'Commemorate'. It also advertises a 'LOOM Buyer's Guide' and a 'STASH to SHROUD' feature. The background fabrics show different weaving patterns and colors, including white, blue, purple, green, and orange.

HANDWOVEN
Subscribe Today!
5 issues for \$25
handwovenmagazine.com

A Lush, Brushed Blanket

by Liz Moncrief

The blanket, though 44" × 58", weighs little more than two pounds, a consequence of the softly spun, lofty singles wool/alpaca blend.



From *Handwoven*, January/February 2009; pp. 60–61.

This blanket is woven in plain weave (rather than twill) because the Berkshire Brights yarns are so soft and fuzzy that the cleaner sheds made possible by looser setts seemed like a good idea. The choice was a good one. After brushing, because of the loftiness of the yarn, the blanket provides wonderful warmth without the greater weight of a closer twill sett. The finished blanket weighs just a bit over two pounds. These yarns come in a wonderful range of colors, so choose colors and a stripe design that fit your decor.

1. Warp color order

	darker half	lighter half	
54	54		Navy
60		60	Dark Teal
66	30	18	Amethyst
84		30	Charcoal
54		24	Fuchsia
318		30	

2. Weft color order

	Shetland	Fuchsia	Charcoal	Amethyst	Dark Teal	Navy
3"						
			6½"			
			4"			
			4"		13"	
		6½"				
	4½"					
			13"			
		8"				
3"						
					8½"	

To weave the blanket in two panels, add 2½ yd to warp length and wind a warp following the darker or lighter half of the warp color order (or design your own stripe sequence). Reverse the weft color order for the second panel. To sew the two panels together, rotate one panel 180 degrees.

Brushing creates a soft, fuzzy surface.



The color orders of the stripes in both warp and weft are asymmetrical.



PROJECT at-a-glance

Weave structure for blanket

Plain weave.

Equipment

4-shaft loom, 53" weaving width; 6-dent reed; 1–5 ski shuttles, 1 boat shuttle (for hems); wire pet brush.

Yarns

Warp and weft: 85% wool/15% alpaca singles (643 yd/lb, Berkshire Brights, Webs), Fuchsia, 283 yd; Charcoal, 441 yd; Amethyst, 339 yd; Dark Teal, 306 yd; Navy, 245 yd.

Warp for floating selvages: 5/2 pearl cotton in any color, used doubled, 12 yd.

Weft for hems: 2-ply wool (1,800 yd/lb, Harrisville Shetland), Charcoal, 116 yd (or similar size yarn).

Warp length

318 ends 3 yd long
(allows 7" for take-up, 27" for loom waste).

Stetts

Warp: 6 epi (1/dent in a 6-dent reed). Weft: 5½ ppi.

Finished dimensions

Width in the reed: 53". Woven length (measured under tension on the loom): 74" including hem sections. Finished size after washing, hemming, and brushing: 44" × 58" (expect 10–15% shrinkage).

- 1** Warp the loom using your preferred method but treat the singles yarn gently. Use a 6-dent reed to avoid the abrasion that might be caused by spacing the threads in a finer reed. Thread 1-2-3-4 for plain weave to avoid crowding. Add doubled 5/2 pearl cotton floating selvages to each side (they will be removed later).
- 2** Begin and end the blanket with 3" of plain weave in Harrisville Shetland (to reduce hem bulk). Weave the blanket at 5½ ppi using the wool/alpaca for 68" following Figure 2. Use ski shuttles so you can "throw" the shuttle across the web (using a stick shuttle would be much more time-consuming and a boat shuttle would not carry enough weft). Use moderate tension. Too much tension will risk breaking warp threads. Beat the weft gently in an open shed so as not to abrade the soft yarn.
- 3** When you have finished the second hem, remove the blanket from the loom and pull out cotton floating selvages. Machine zigzag raw edges, turn ends under twice, press, and handsew hems using Harrisville Shetland.
- 4** Fill a washing machine with warm water and add ⅓ cup fabric softener. Turn the machine off and soak the blanket until thoroughly wet (about 30 min). Turn the machine to the wash cycle and stand by. Check after every 1-2 min, because the loosely spun yarn can full quickly and become feltlike. When the fabric is fulled to your satisfaction, turn the machine to the spin cycle and spin out water.
- 5** Remove the blanket, lay it over a large table, and gently brush while it is still damp using a pet brush, hand-card, or sturdy hairbrush. Place the brush directly down into the pile, grab the fibers, and pull straight up. Brush from the middle of the blanket and work out to each edge. If you brush widthwise, the blanket may widen a bit; working lengthwise, the blanket may lengthen. I brushed only one surface of this blanket and left the other plain (though it fluffed a bit on its own in the washing machine and dryer). When the blanket is sufficiently brushed, put it in the dryer for a final bit of fluffing, but only on air/fluff, with no heat. You can pop the blanket into the dryer to refluff every couple of months. 